

日々の衛星画像

1989年 7 月

(赤外画像)

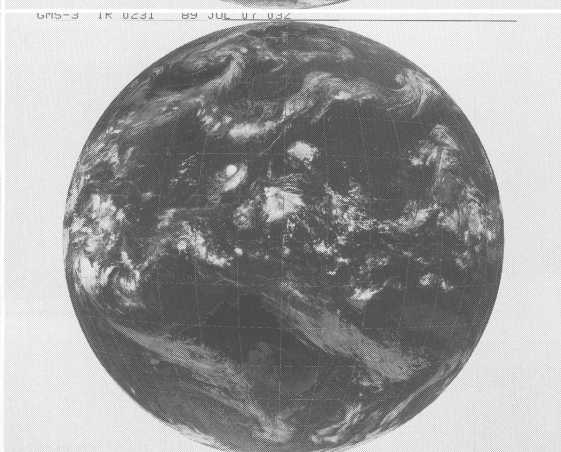
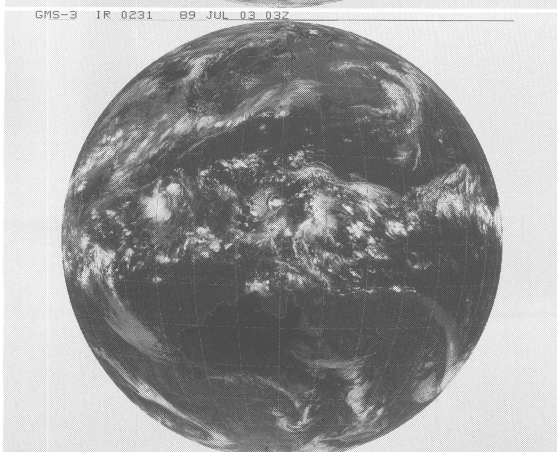
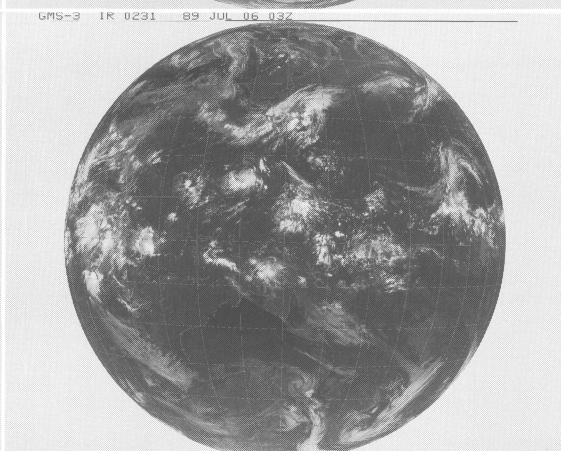
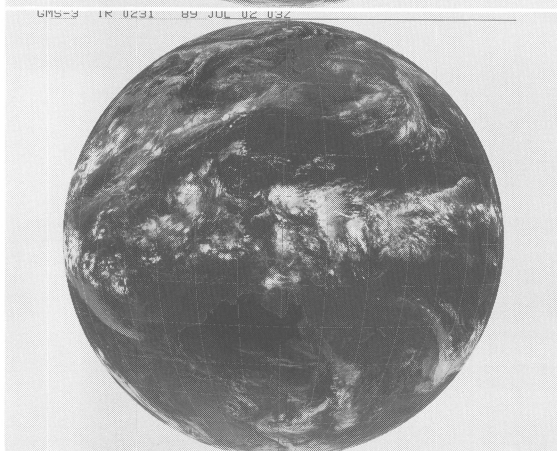
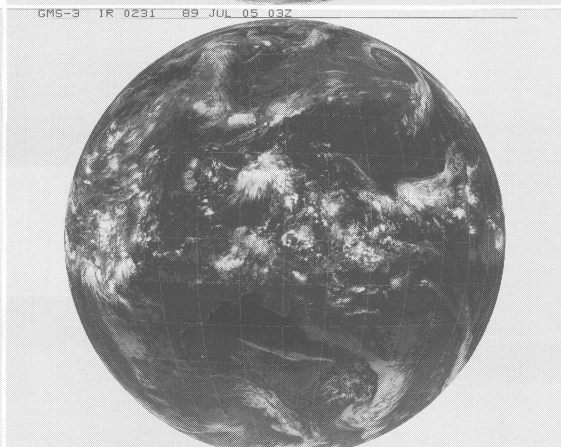
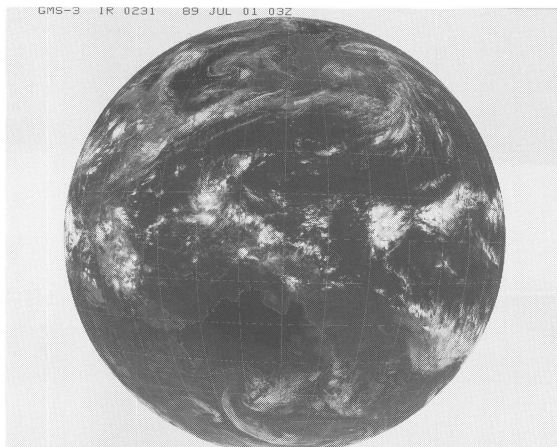
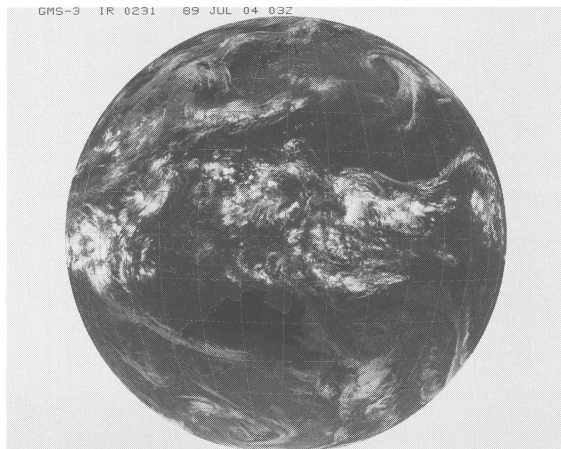
ひまわり 3 号

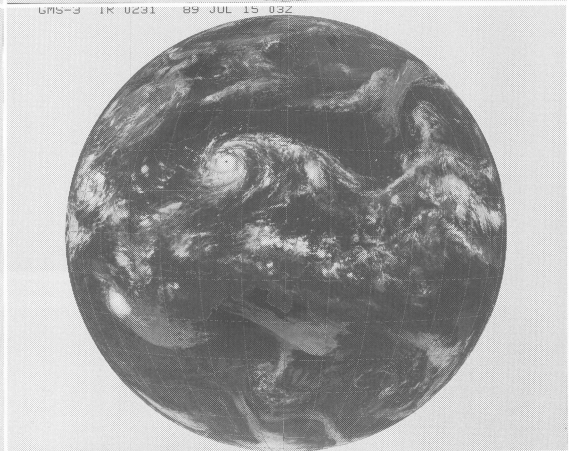
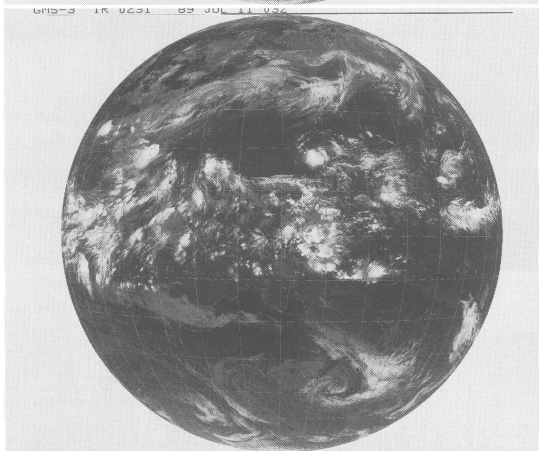
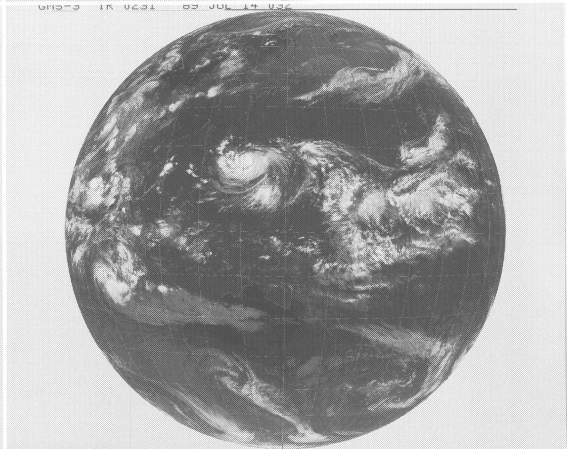
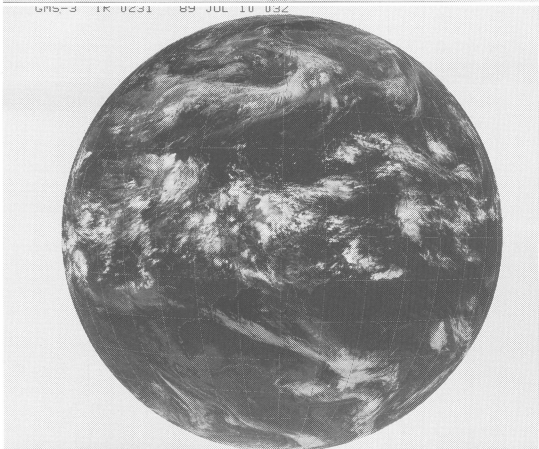
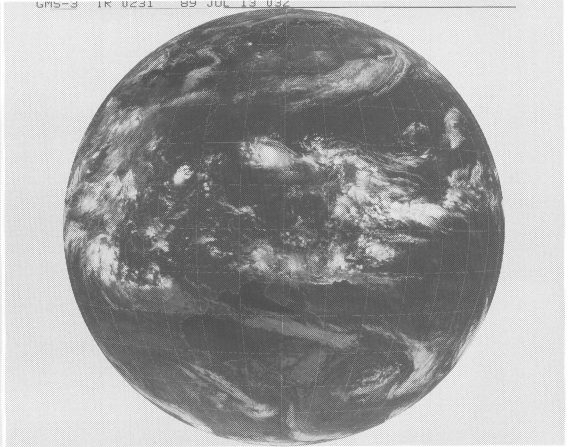
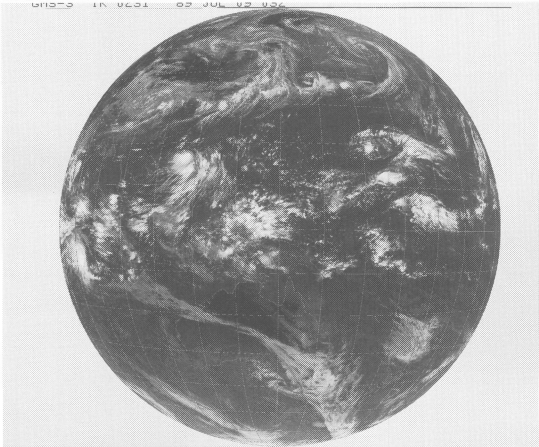
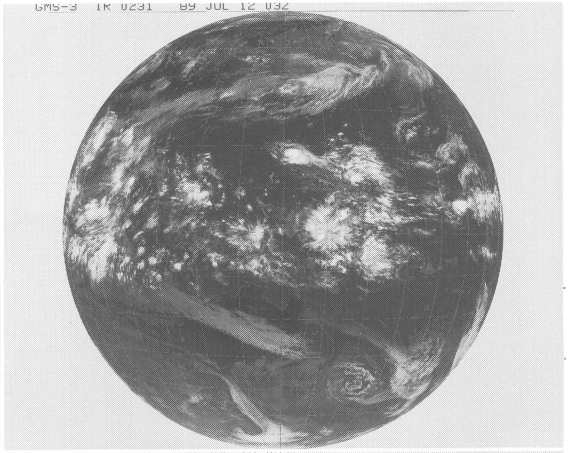
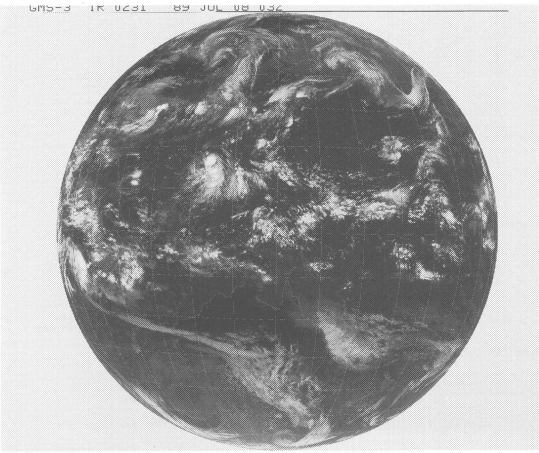
(表示例)

(気象庁提供)

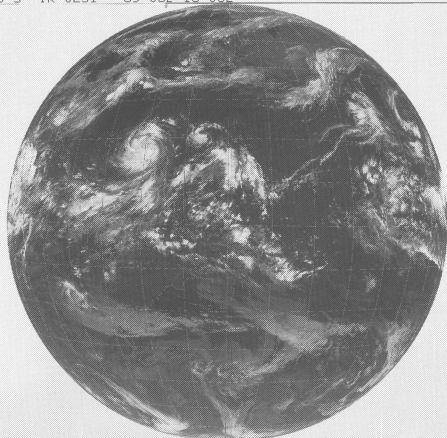
ひまわり	赤外	撮像開始時分	年	月	日	時刻
GMS-3	IR	0231	85	OCT	01	03Z

時刻は国際標準時で、9 時間を加えると日本時間です。

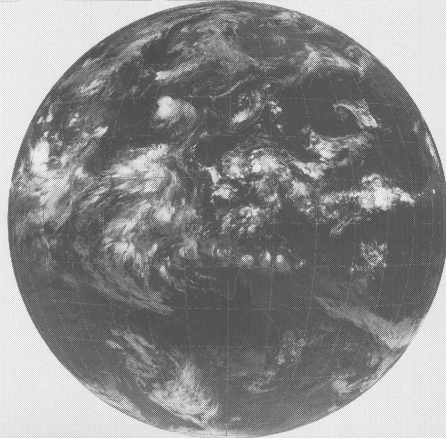




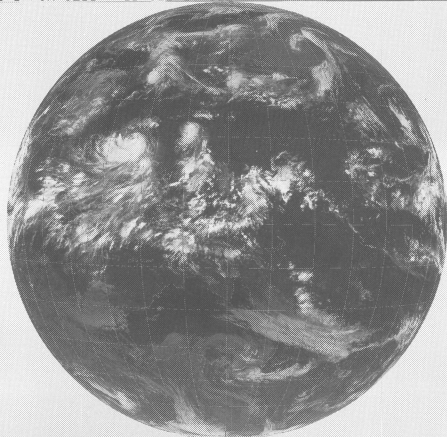
GMS-3 IR 0231 89 JUL 16 03Z



GMS-3 IR 0231 89 JUL 20 03Z



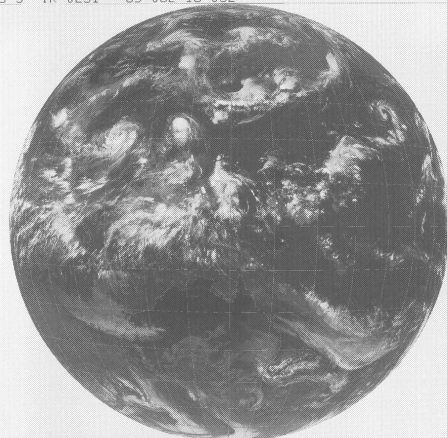
GMS-3 IR 0231 89 JUL 11 03Z



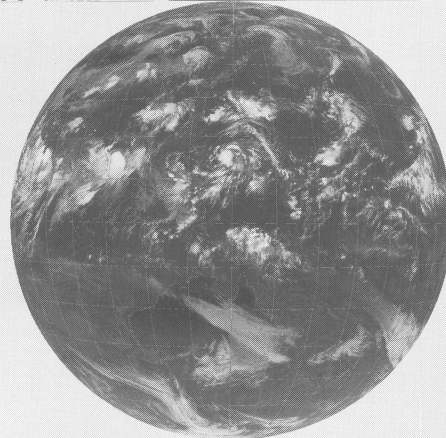
GMS-3 IR 0231 89 JUL 21 03Z



GMS-3 IR 0231 89 JUL 18 03Z



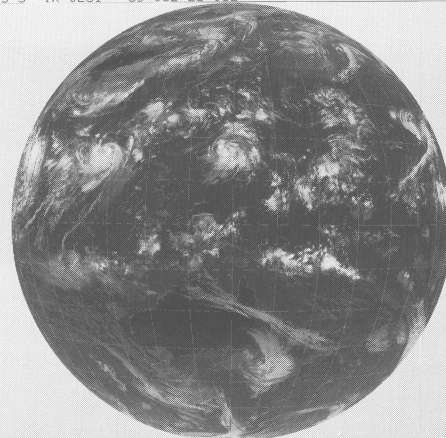
GMS-3 IR 0231 89 JUL 22 03Z



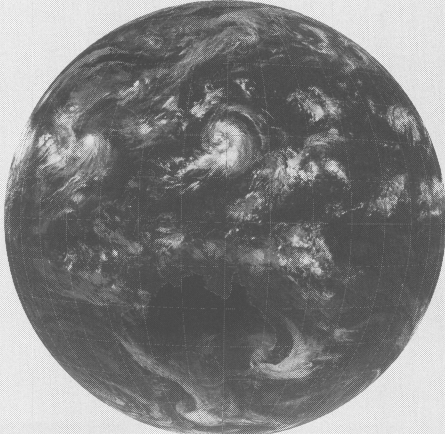
GMS-3 IR 0231 89 JUL 19 03Z



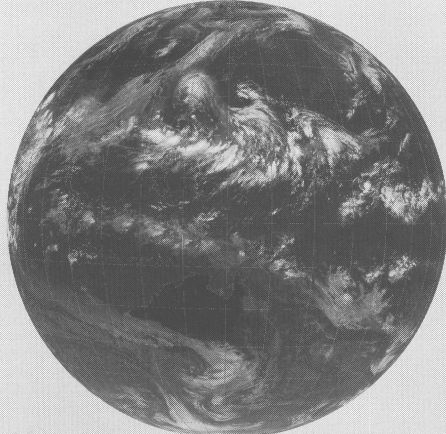
GMS-3 IR 0231 89 JUL 23 03Z



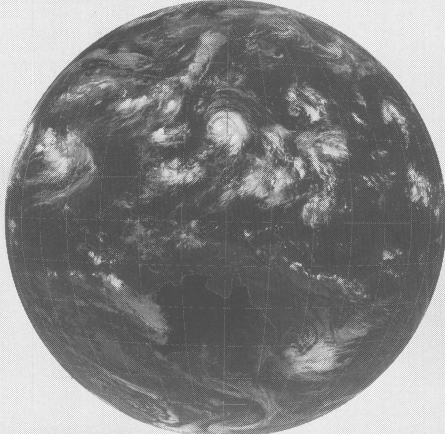
GMS-3 IR 0231 89 JUL 24 03Z



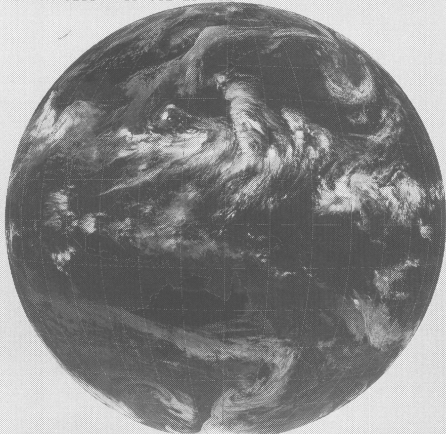
GMS-3 IR 0231 89 JUL 28 03Z



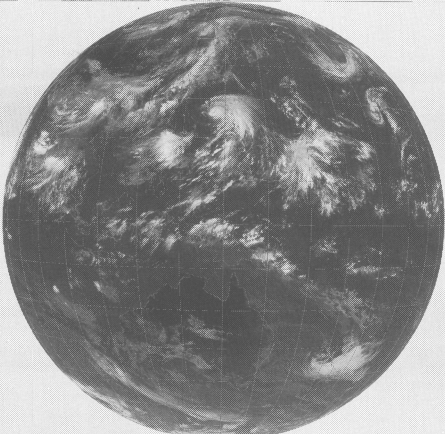
GMS-3 IR 0231 89 JUL 29 03Z



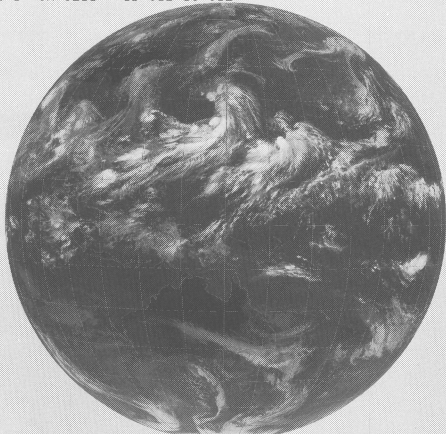
GMS-3 IR 0231 89 JUL 29 03Z



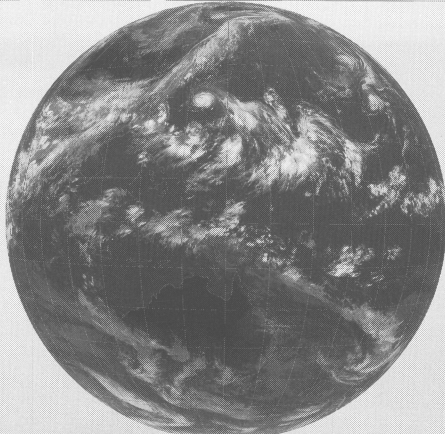
GMS-3 IR 0231 89 JUL 26 03Z



GMS-3 IR 0231 89 JUL 30 03Z



GMS-3 IR 0231 89 JUL 27 03Z



GMS-3 IR 0231 89 JUL 31 03Z

