

# 日々の衛星画像

## 1989年 9 月

(赤外画像)

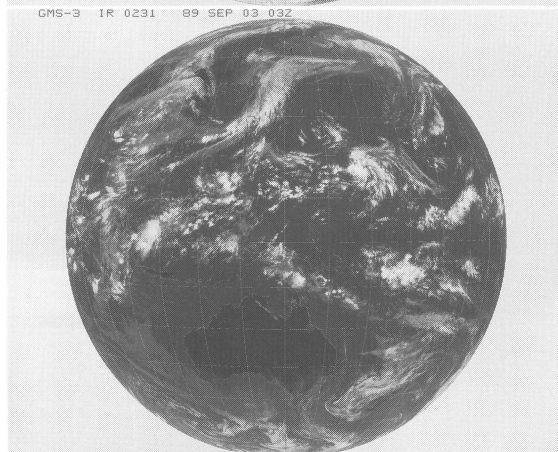
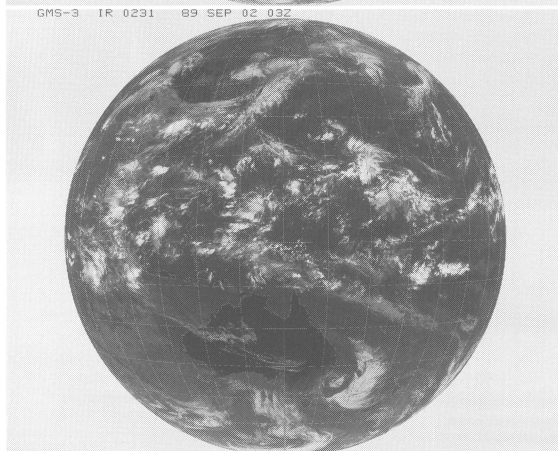
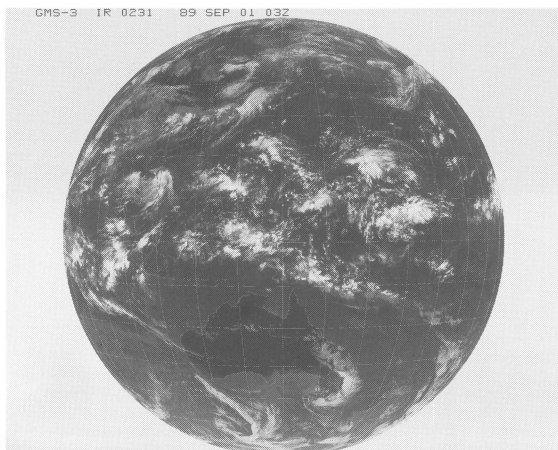
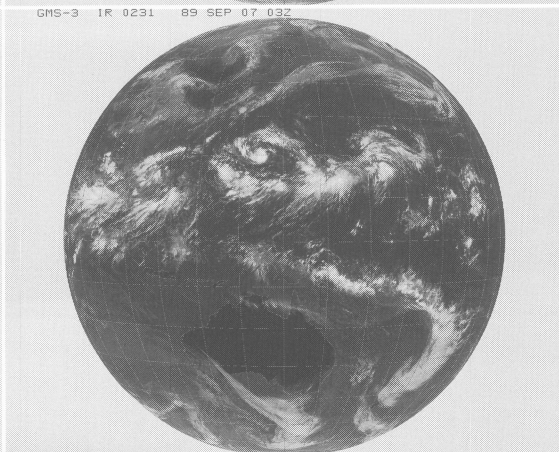
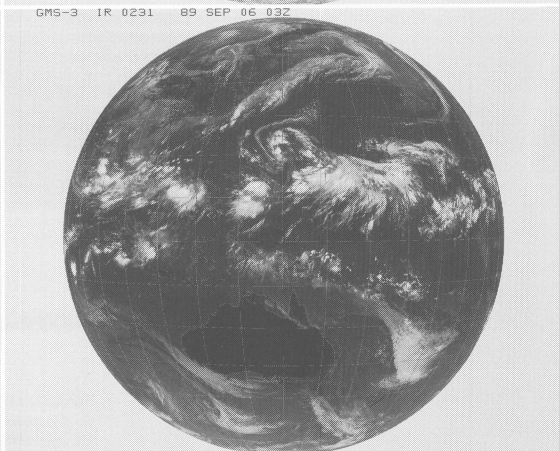
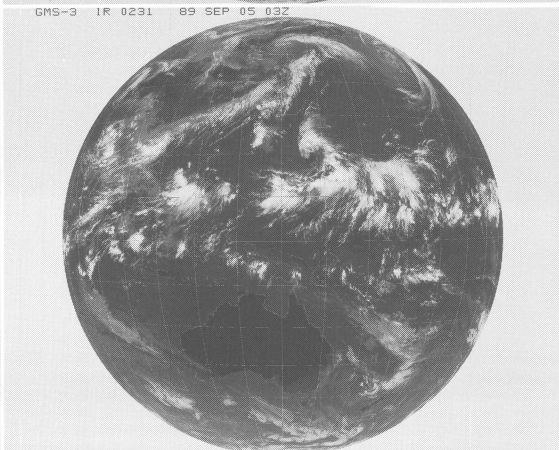
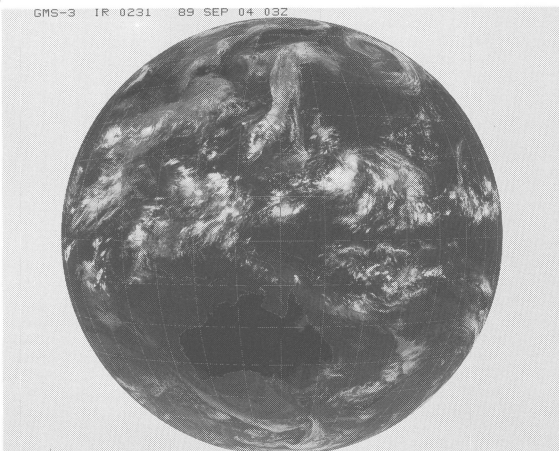
ひまわり 3号

(表示例)

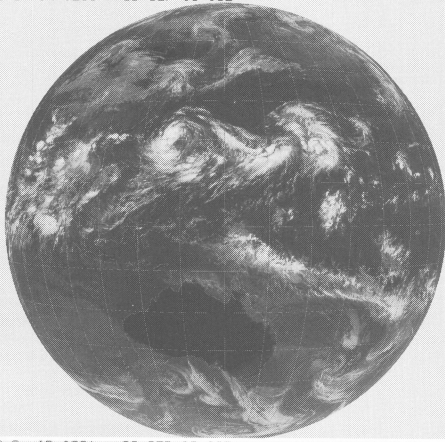
(気象庁提供)

ひまわり	赤外	撮像開始時分	年	月	日	時刻
GMS-3	IR	0231	85	OCT	01	03Z

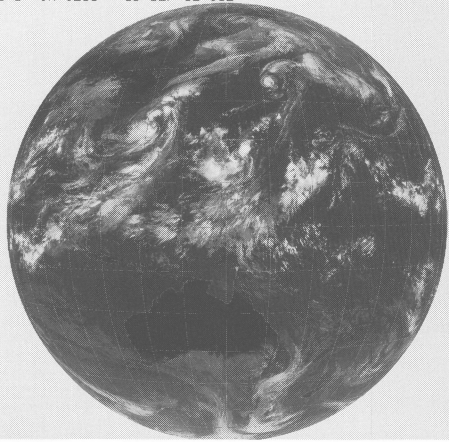
時刻は国際標準時で、9時間を加えると日本時間です。



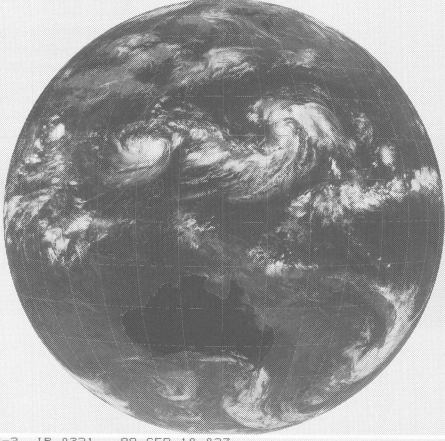
GMS-3 IR 0231 89 SEP 08 03Z



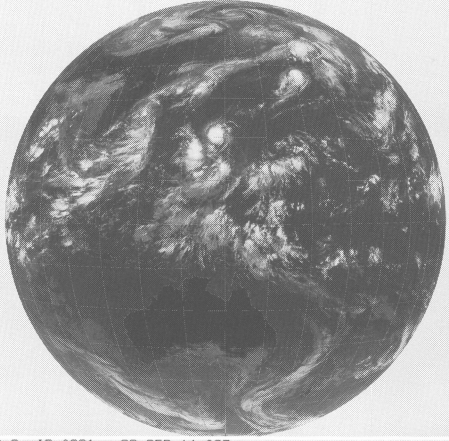
GMS-3 IR 0231 89 SEP 12 03Z



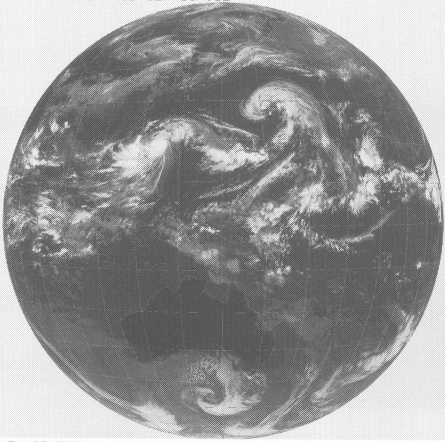
GMS-3 IR 0231 89 SEP 09 03Z



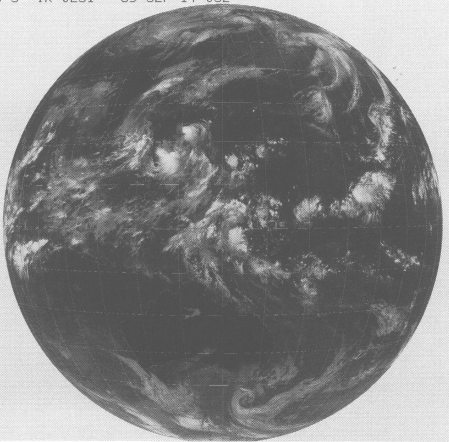
GMS-3 IR 0231 89 SEP 13 03Z



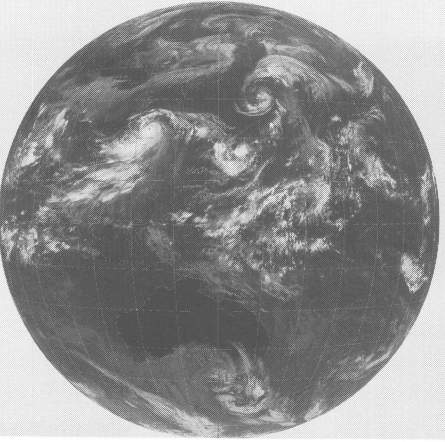
GMS-3 IR 0231 89 SEP 10 03Z



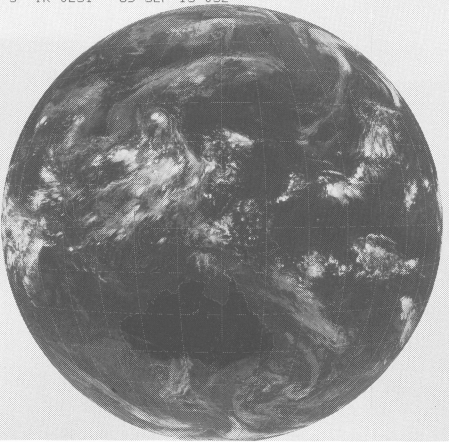
GMS-3 IR 0231 89 SEP 14 03Z



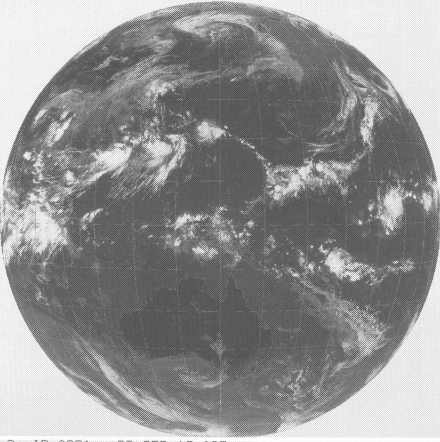
GMS-3 IR 0231 89 SEP 11 03Z



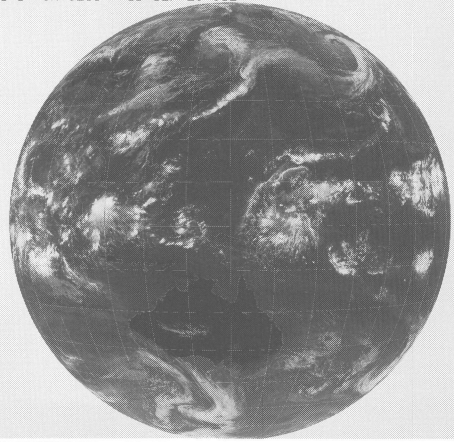
GMS-3 IR 0231 89 SEP 15 03Z



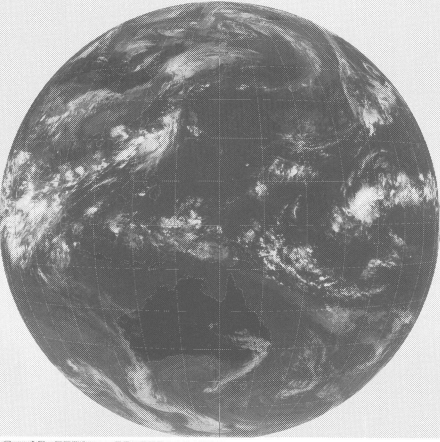
GMS-3 IR 0231 89 SEP 16 03Z



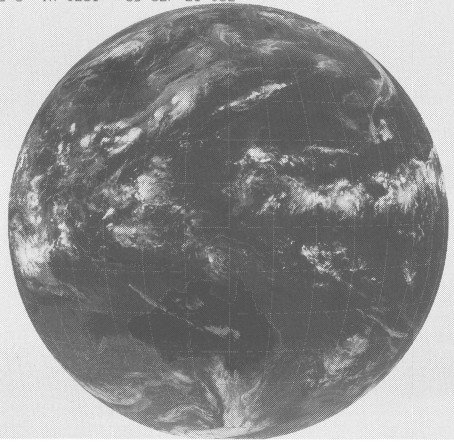
GMS-3 IR 0231 89 SEP 20 03Z



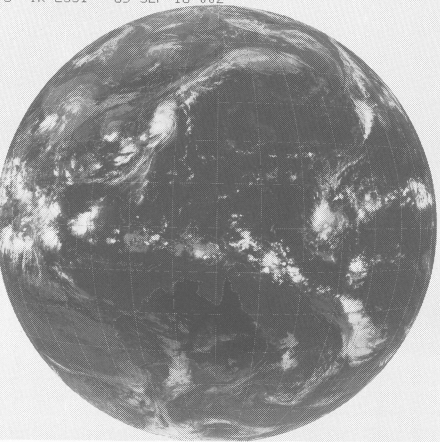
GMS-3 IR 0231 89 SEP 17 03Z



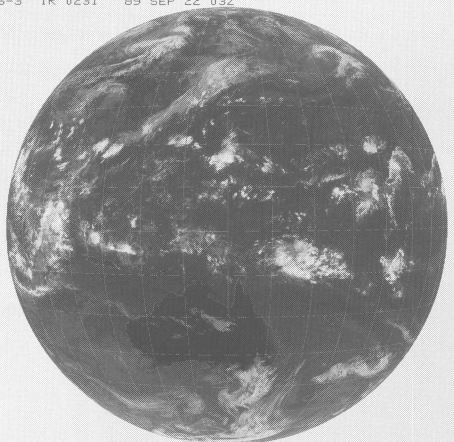
GMS-3 IR 0231 89 SEP 21 03Z



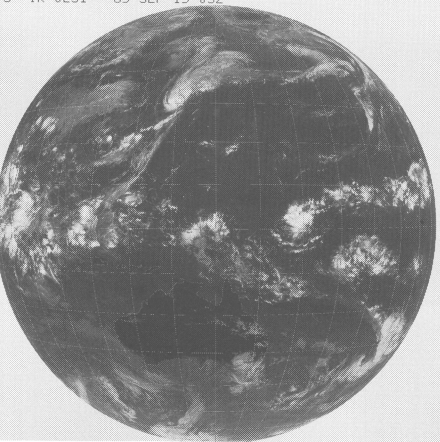
GMS-3 IR 2331 89 SEP 18 00Z



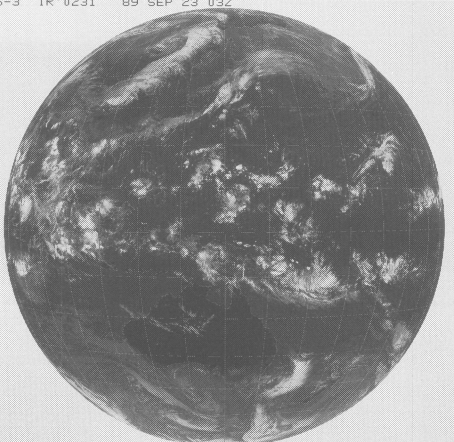
GMS-3 IR 0231 89 SEP 22 03Z



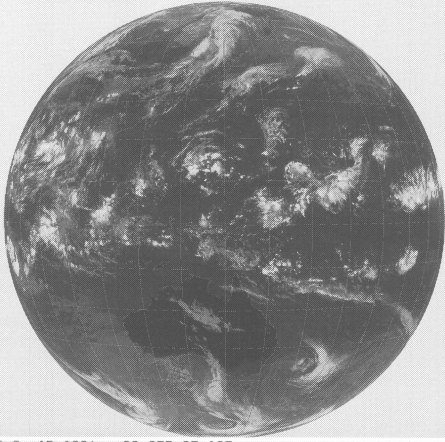
GMS-3 IR 0231 89 SEP 19 03Z



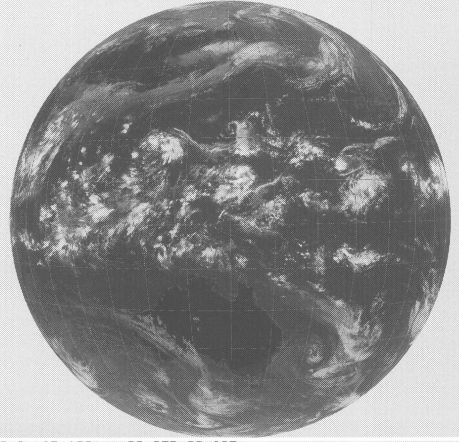
GMS-3 IR 0231 89 SEP 23 03Z



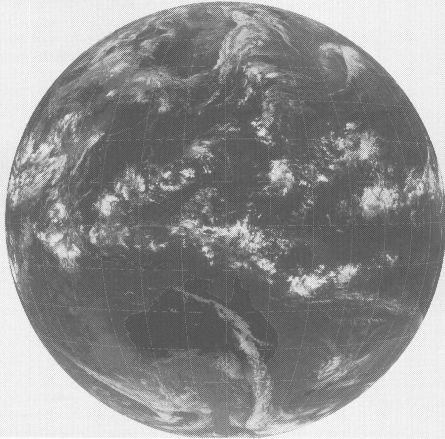
GMS-3 IR 0231 89 SEP 24 03Z



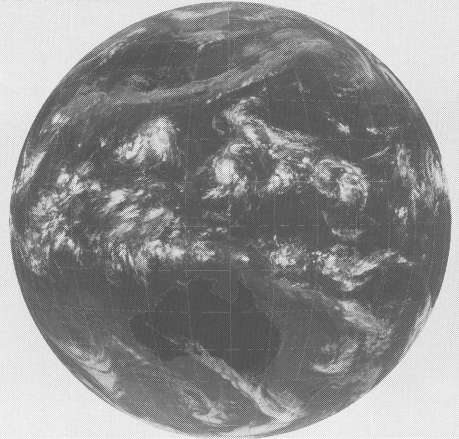
GMS-3 IR 0231 89 SEP 28 03Z



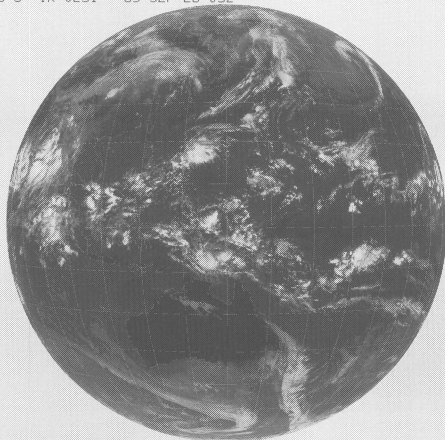
GMS-3 IR 0231 89 SEP 25 03Z



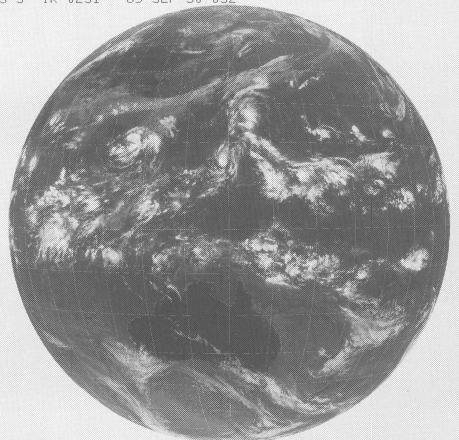
GMS-3 IR 0231 89 SEP 29 03Z



GMS-3 IR 0231 89 SEP 26 03Z



GMS-3 IR 0231 89 SEP 30 03Z



GMS-3 IR 0231 89 SEP 27 03Z

