

日々の衛星画像

1990年 1月

(赤外画像)

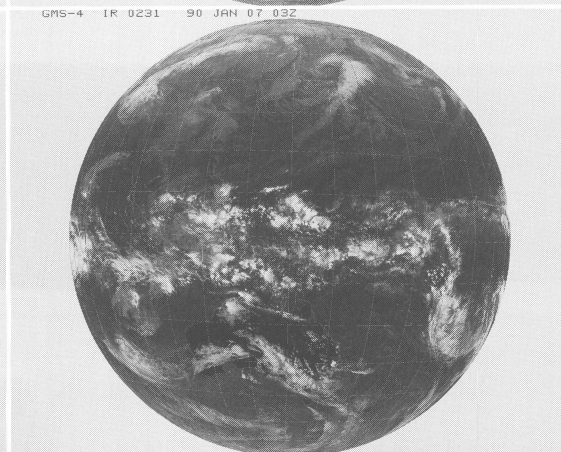
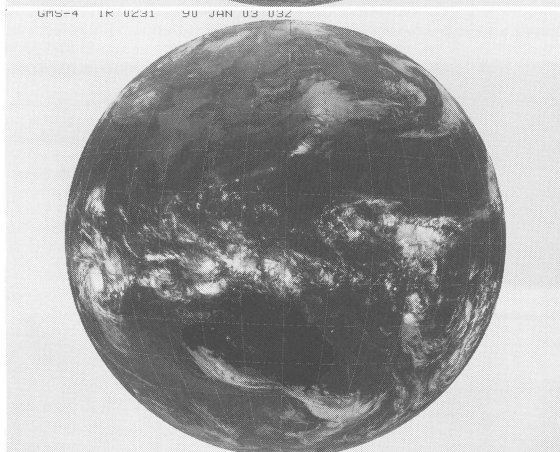
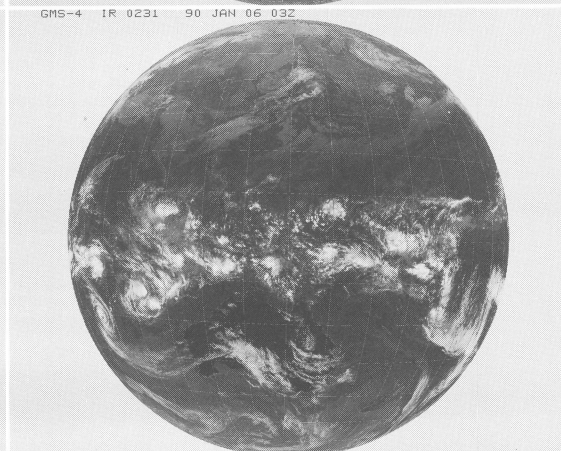
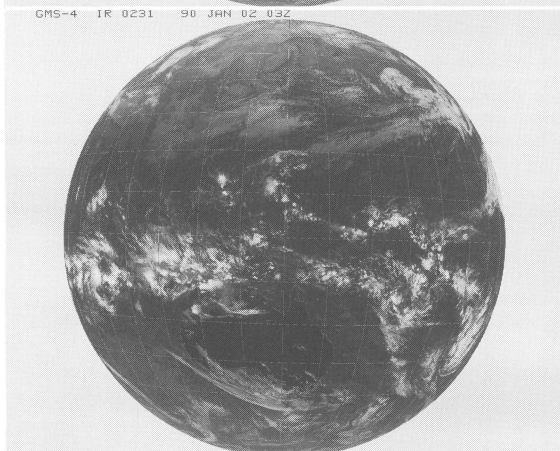
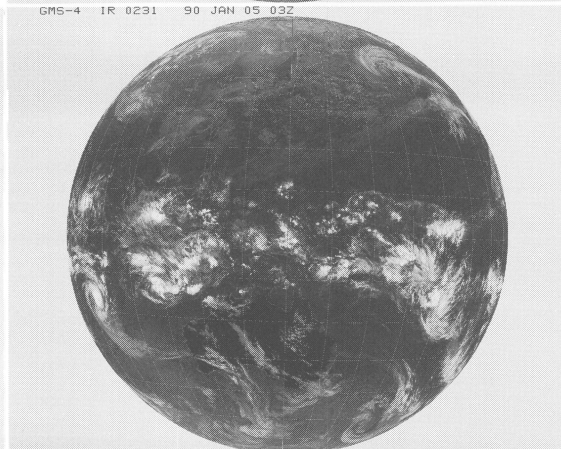
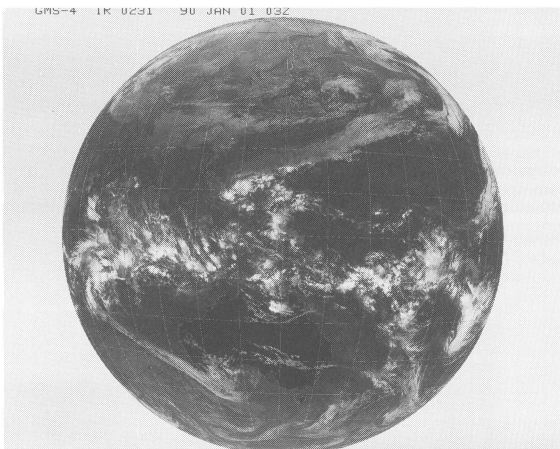
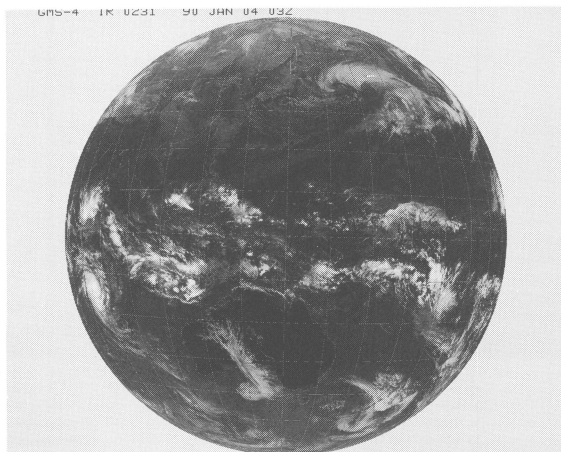
ひまわり3号

(表示例)

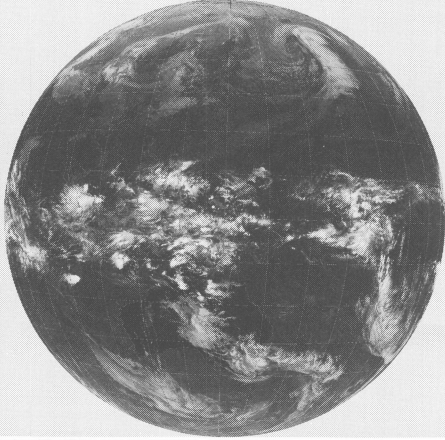
(気象庁提供)

ひまわり	赤外	撮像開始時分	年	月	日	時刻
GMS-3	IR	0231	85	OCT	01	03Z

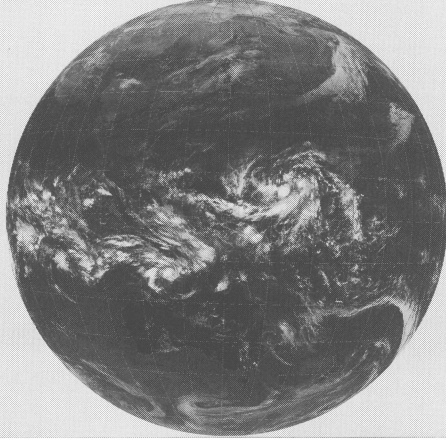
時刻は国際標準時で、9時間を加えると日本時間です。



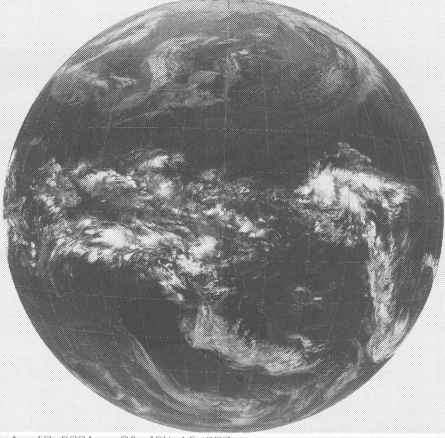
GMS-4 IR 0231 90 JAN 08 03Z



GMS-4 IR 0231 90 JAN 12 03Z



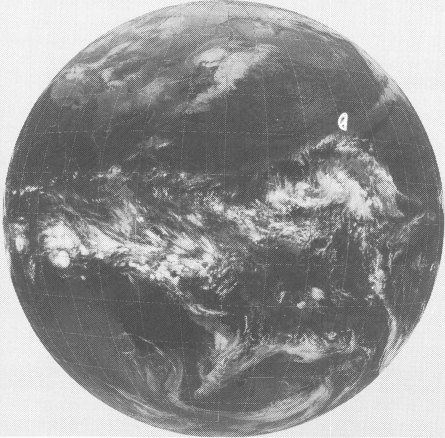
GMS-4 IR 0231 90 JAN 09 03Z



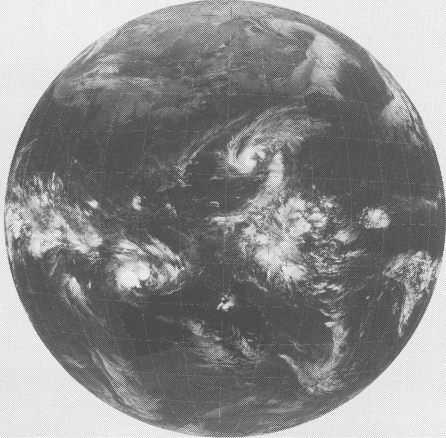
GMS-4 IR 0231 90 JAN 13 03Z



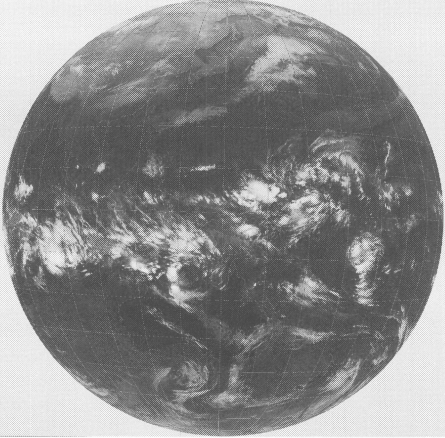
GMS-4 IR 0231 90 JAN 10 03Z



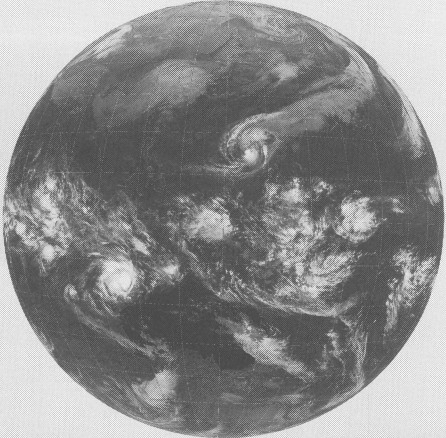
GMS-4 IR 0231 90 JAN 14 03Z



GMS-4 IR 0231 90 JAN 11 00Z



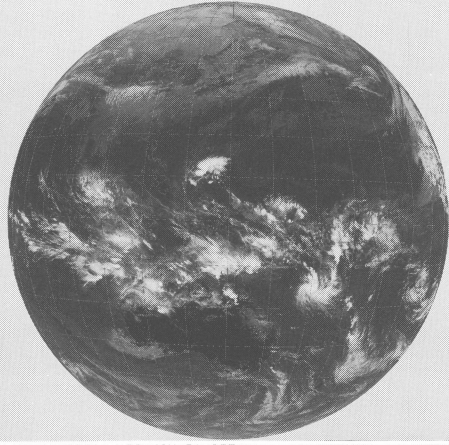
GMS-4 IR 0231 90 JAN 15 03Z



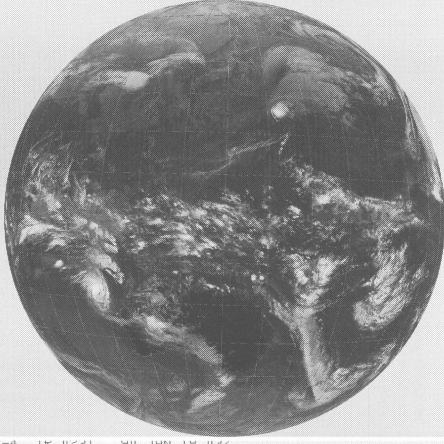
GMS-4 IR 0231 90 JAN 16 03Z



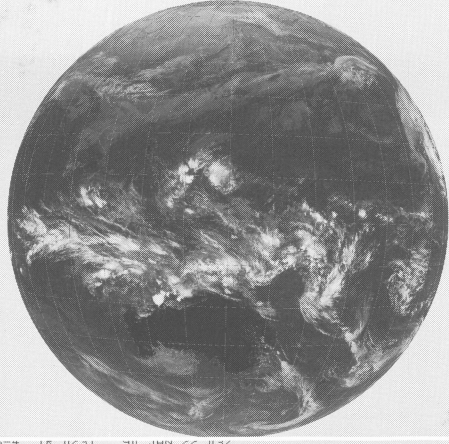
GMS-4 IR 0231 90 JAN 20 03Z



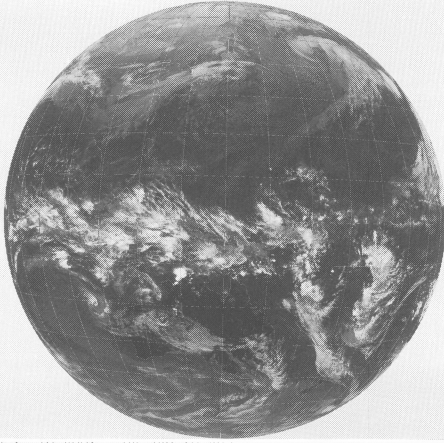
GMS-4 IR 0231 90 JAN 17 03Z



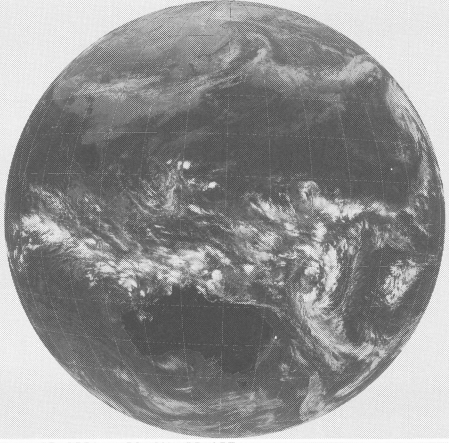
GMS-4 IR 0231 90 JAN 21 03Z



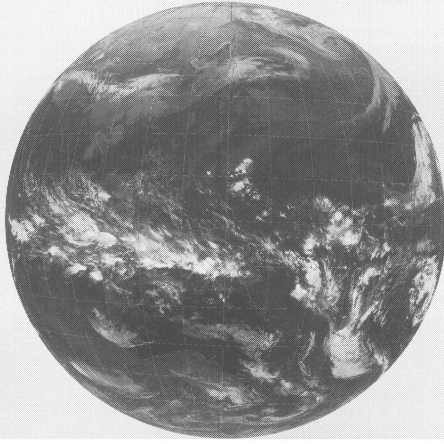
GMS-4 IR 0231 90 JAN 18 03Z



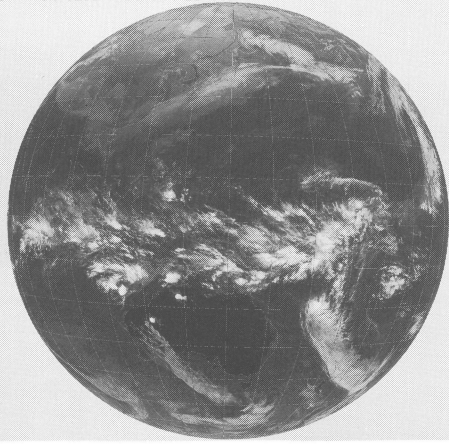
GMS-4 IR 0231 90 JAN 22 03Z



GMS-4 IR 0231 90 JAN 19 03Z



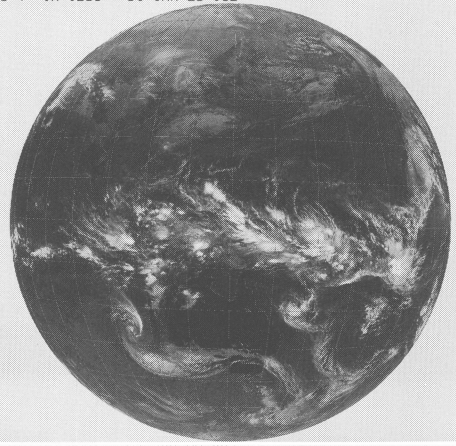
GMS-4 IR 0231 90 JAN 23 03Z



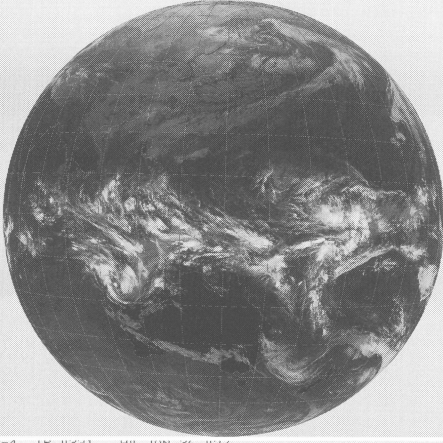
GMS-4 1K 0231 90 JAN 24 03Z



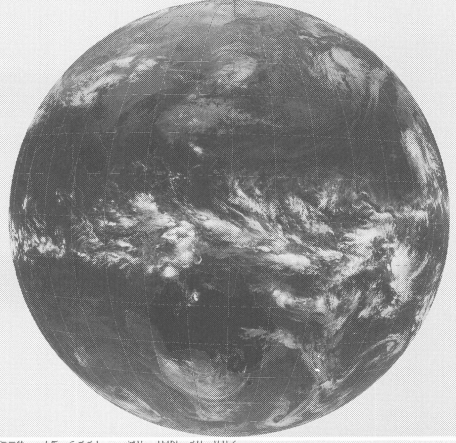
GMS-4 1K 0231 90 JAN 28 03Z



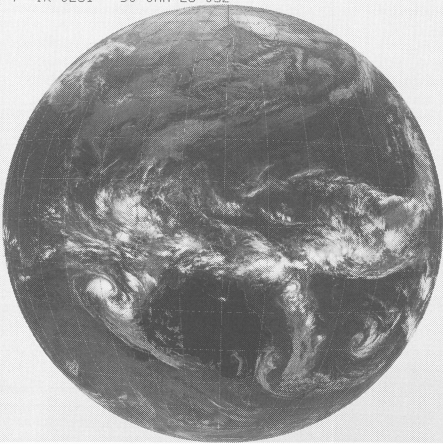
GMS-4 1K 0231 90 JAN 25 03Z



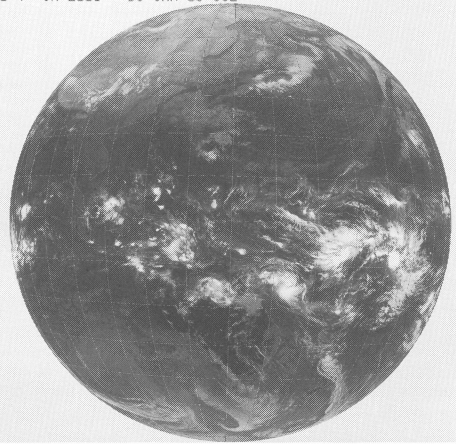
GMS-4 1K 0231 90 JAN 29 03Z



GMS-4 1K 0231 90 JAN 26 03Z



GMS-4 1K 0231 90 JAN 30 03Z



GMS-4 1K 0231 90 JAN 27 03Z



GMS-4 1K 0231 90 JAN 31 03Z

