

# 日々の衛星画像

## 1990年 8 月

(赤外画像)

ひまわり4号

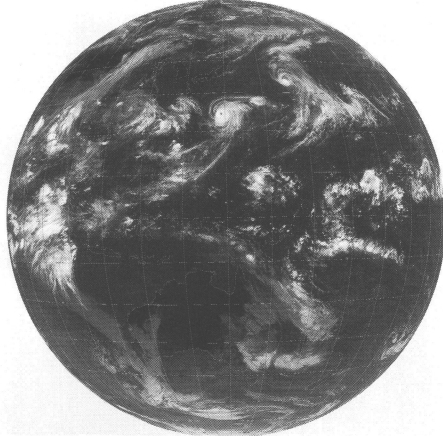
(表示例)

(気象庁提供)

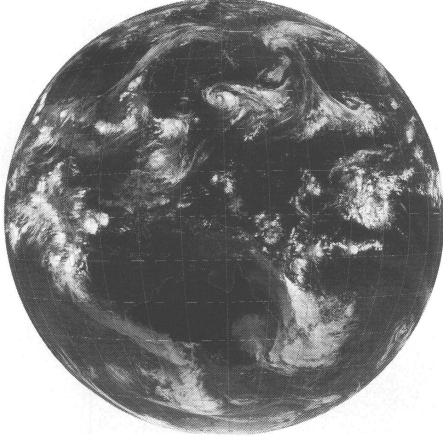
ひまわり	赤外	撮像開始時分	年	月	日	時刻
GMS-4	IR	0231	85	OCT	01	03Z

時刻は国際標準時で、9時間を加えると日本時間です。

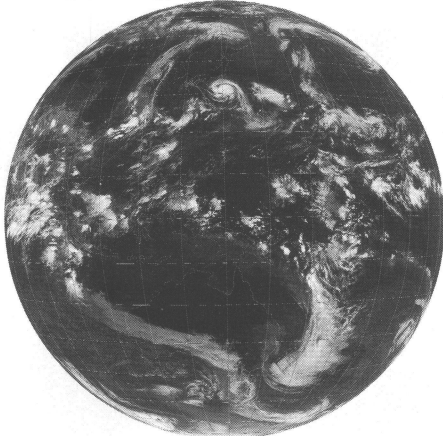
GMS-4 IR 0231 90 AUG 01 03Z



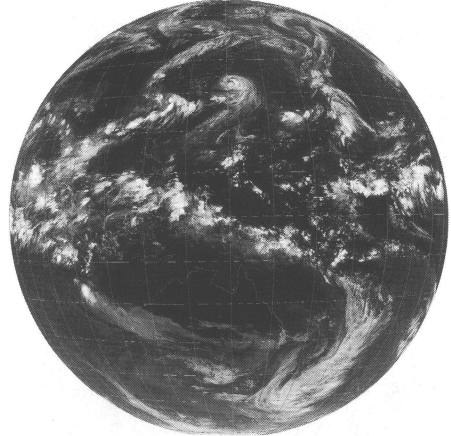
GMS-4 IR 0231 90 AUG 02 03Z



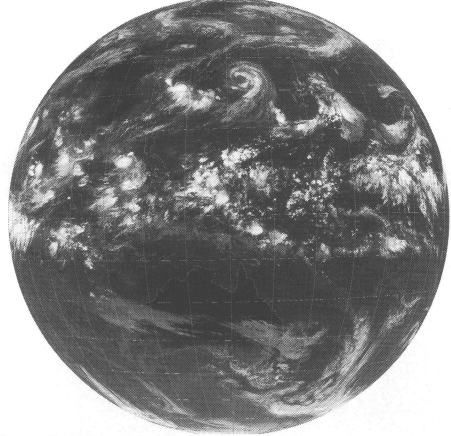
GMS-4 IR 0231 90 AUG 03 03Z



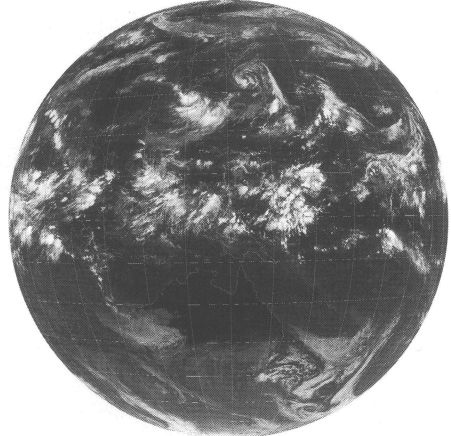
GMS-4 IR 0231 90 AUG 04 03Z



GMS-4 IR 0231 90 AUG 05 03Z



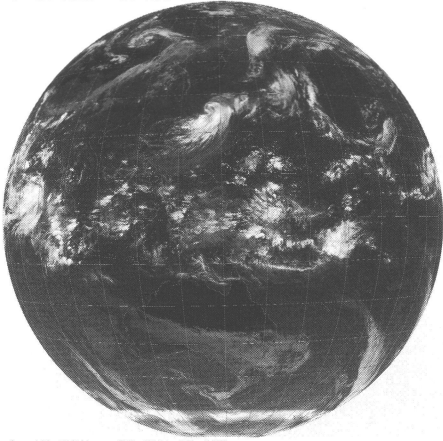
GMS-4 IR 0231 90 AUG 06 03Z



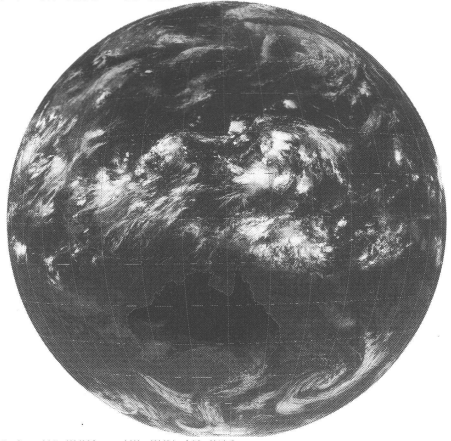
GMS-4 IR 0231 90 AUG 07 03Z



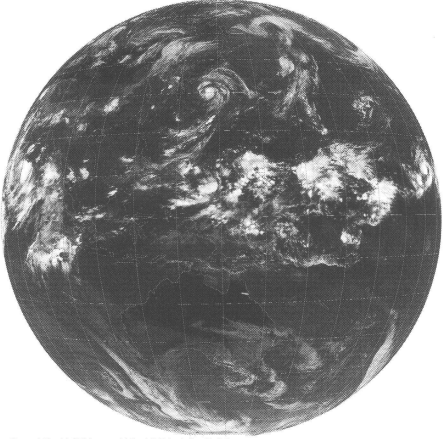
GMS-4 1K 0231 90 AUG 08 03Z



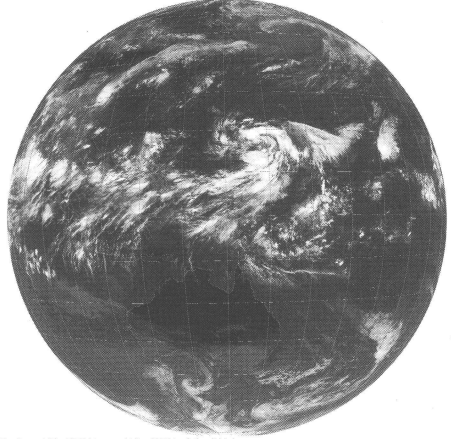
GMS-4 1K 0231 90 AUG 12 03Z



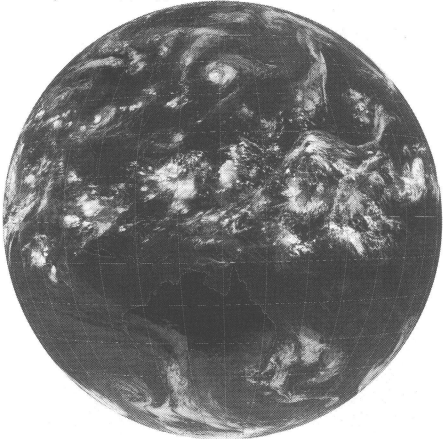
GMS-4 1K 0231 90 AUG 09 03Z



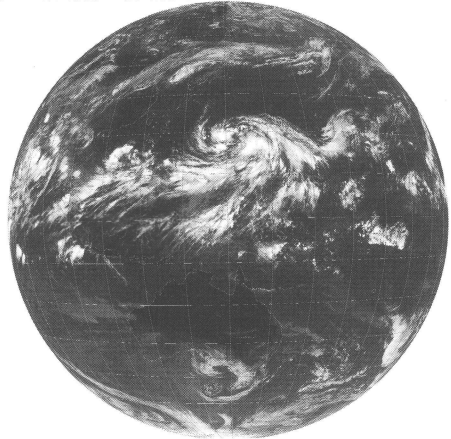
GMS-4 1K 0231 90 AUG 13 03Z



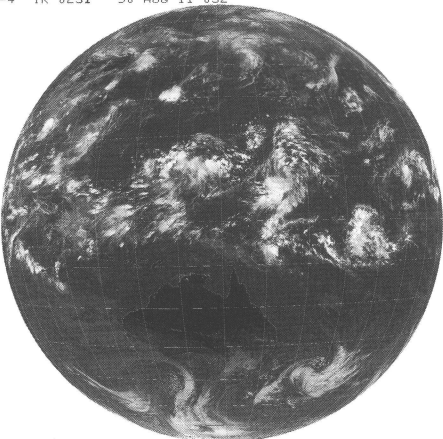
GMS-4 1K 0231 90 AUG 10 03Z



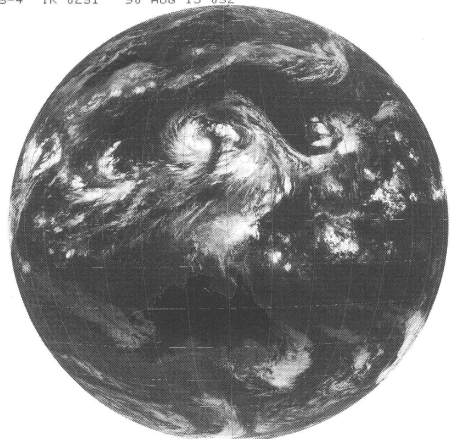
GMS-4 1K 0231 90 AUG 14 03Z



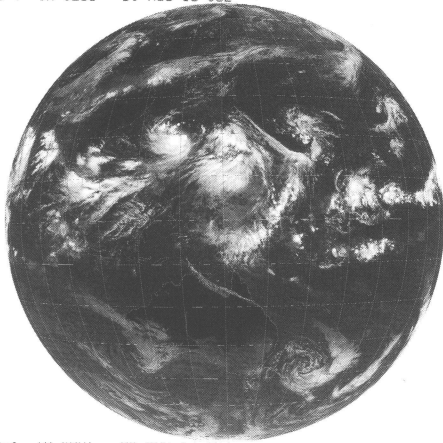
GMS-4 1K 0231 90 AUG 11 03Z



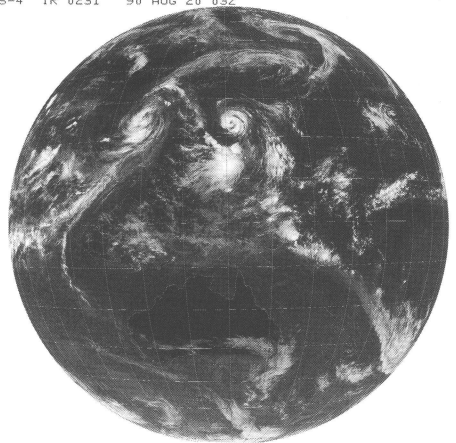
GMS-4 1K 0231 90 AUG 15 03Z



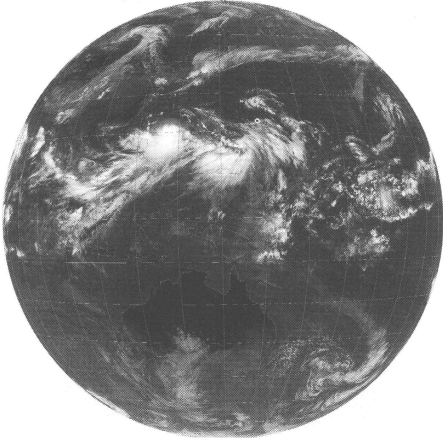
GMS-4 1K 0231 90 AUG 16 03Z



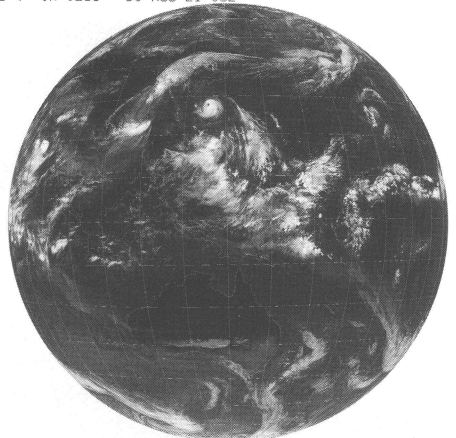
GMS-4 1K 0231 90 AUG 20 03Z



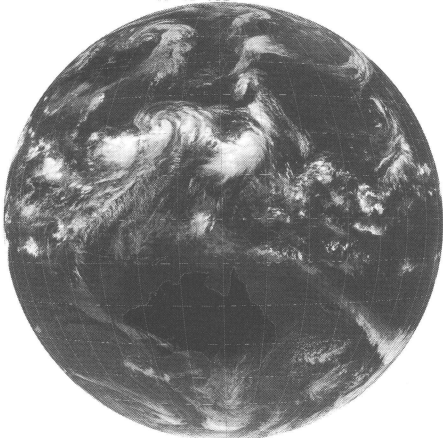
GMS-4 1K 0231 90 AUG 17 03Z



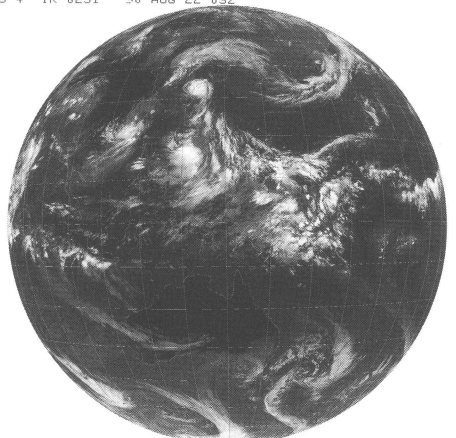
GMS-4 1K 0231 90 AUG 21 03Z



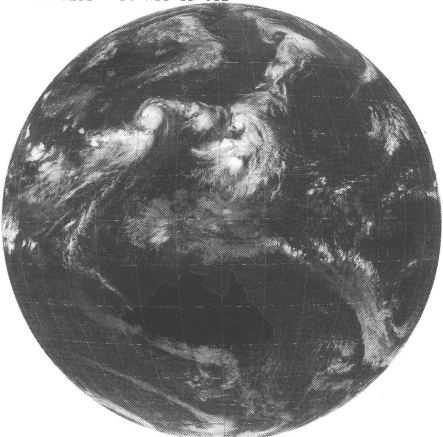
GMS-4 1K 0231 90 AUG 18 03Z



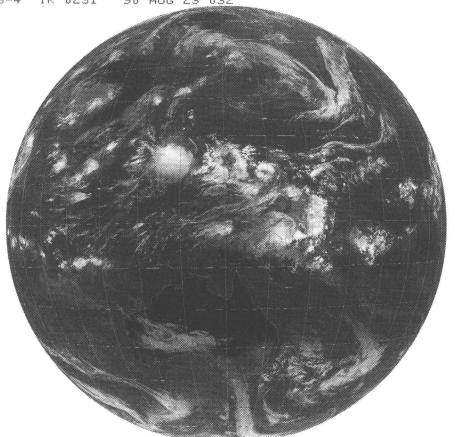
GMS-4 1K 0231 90 AUG 22 03Z



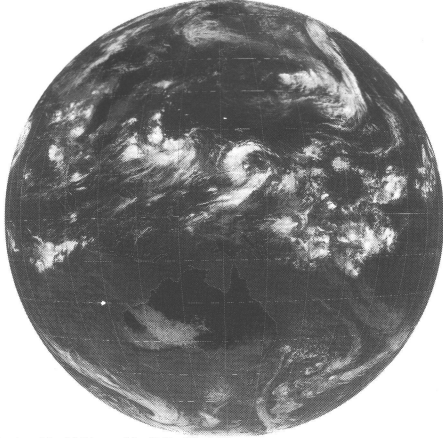
GMS-4 1K 0231 90 AUG 19 03Z



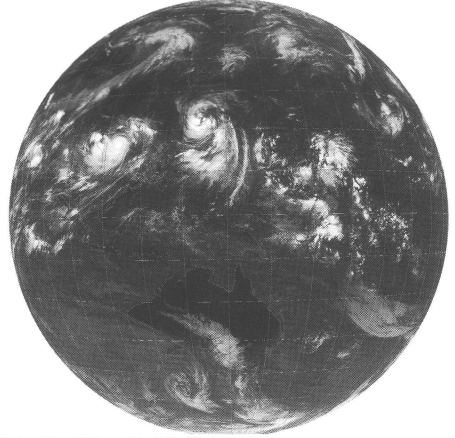
GMS-4 1K 0231 90 AUG 23 03Z



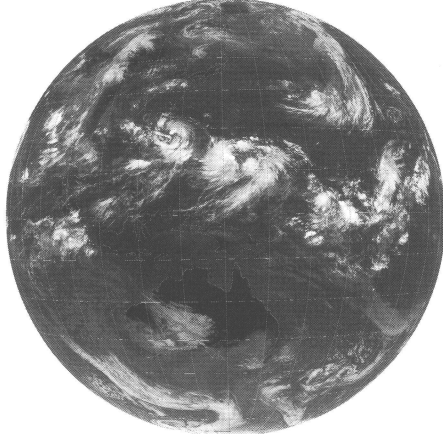
GMS-4 1R 0231 90 AUG 24 03Z



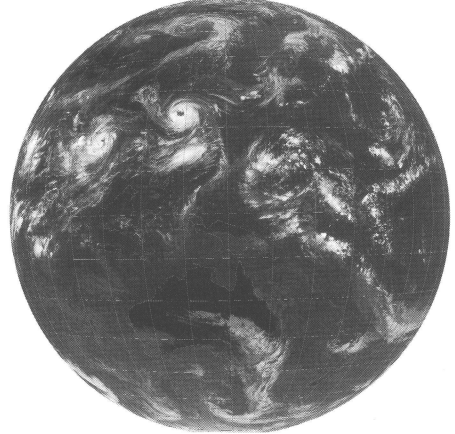
GMS-4 1R 0231 90 AUG 28 03Z



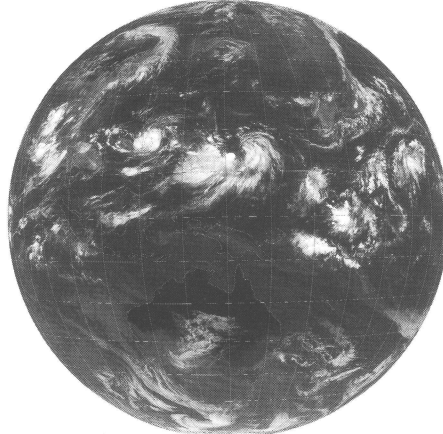
GMS-4 1R 0231 90 AUG 25 03Z



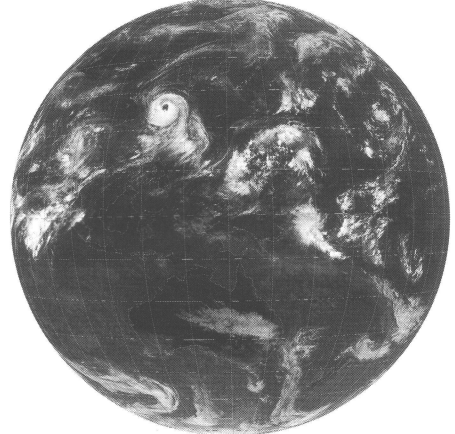
GMS-4 1R 0231 90 AUG 29 03Z



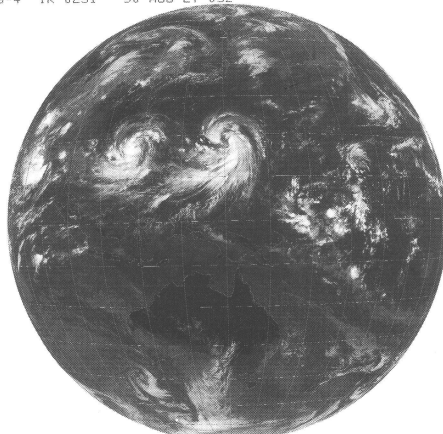
GMS-4 1R 0231 90 AUG 26 03Z



GMS-4 1R 0231 90 AUG 30 03Z



GMS-4 1R 0231 90 AUG 27 03Z



GMS-4 1R 0231 90 AUG 31 03Z

