

# 日々の衛星画像

## 1990年 9 月

(赤外画像)

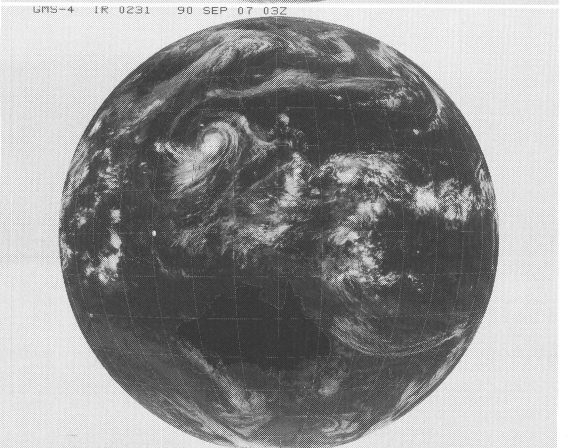
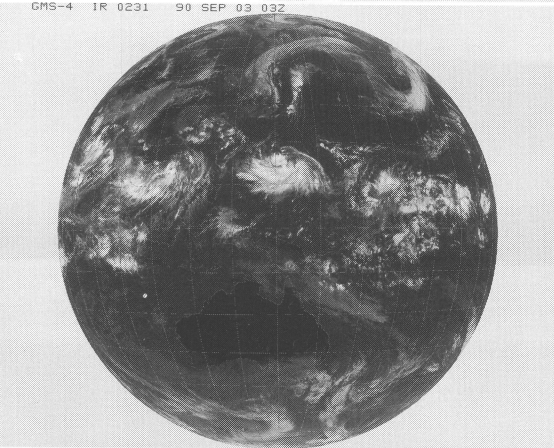
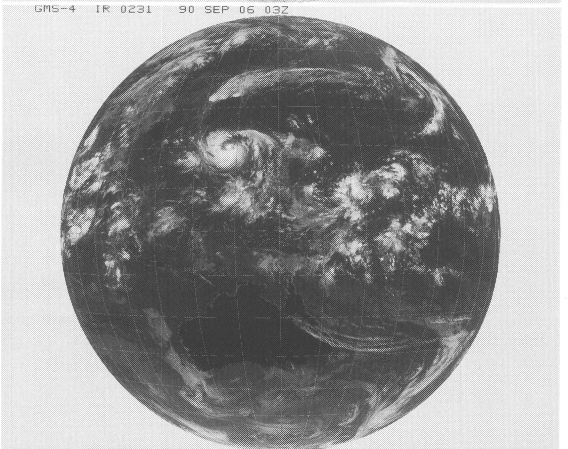
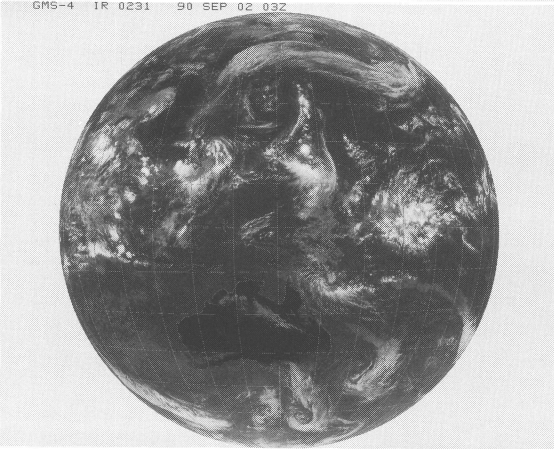
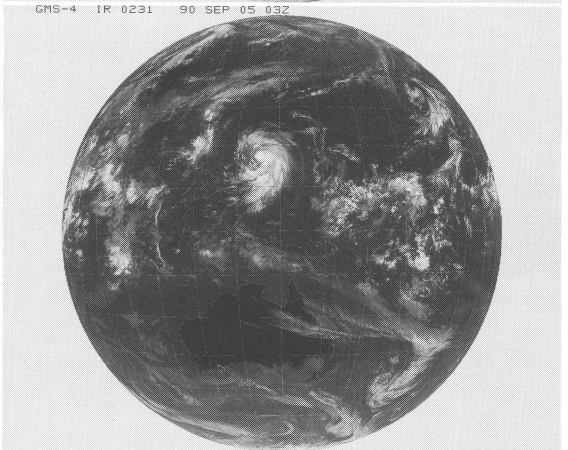
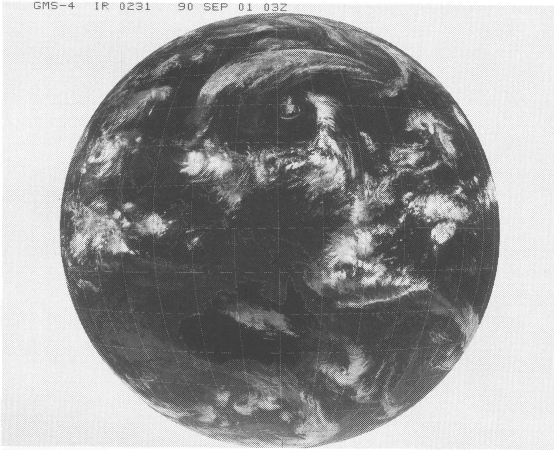
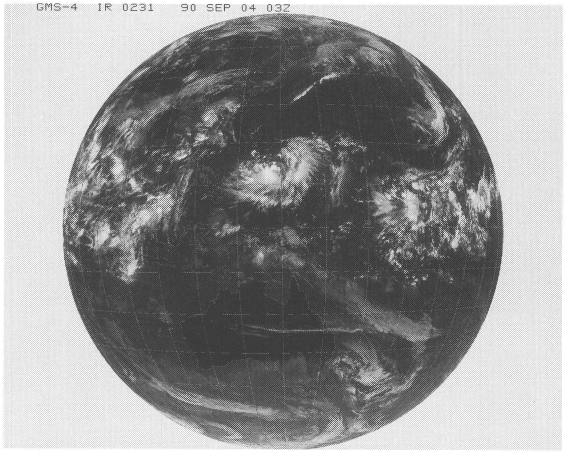
ひまわり 4号

(表示例)

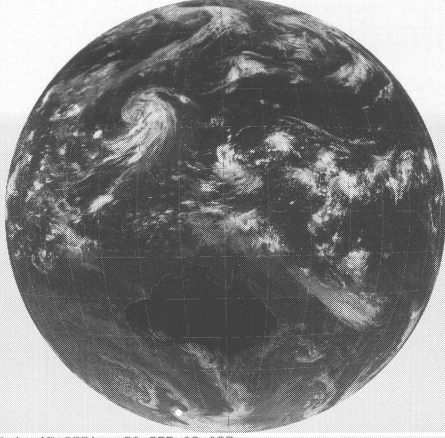
(気象庁提供)

| ひまわり  | 赤外 | 撮像開始時分 | 年  | 月   | 日  | 時刻  |
|-------|----|--------|----|-----|----|-----|
| GMS-4 | IR | 0231   | 85 | OCT | 01 | 03Z |

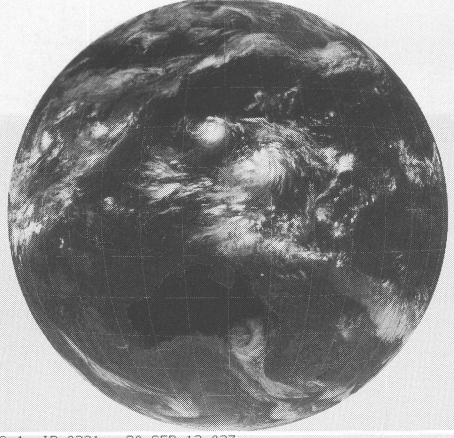
時刻は国際標準時で、9時間を加えると日本時間です。



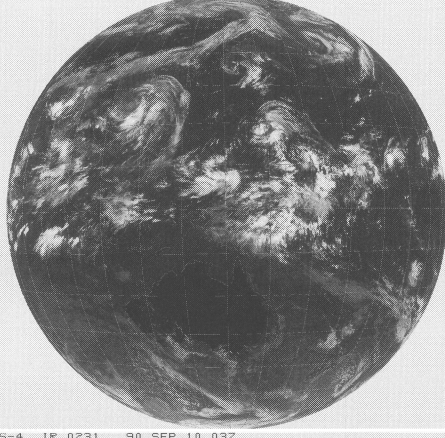
GMS-4 IR 0231 90 SEP 08 03Z



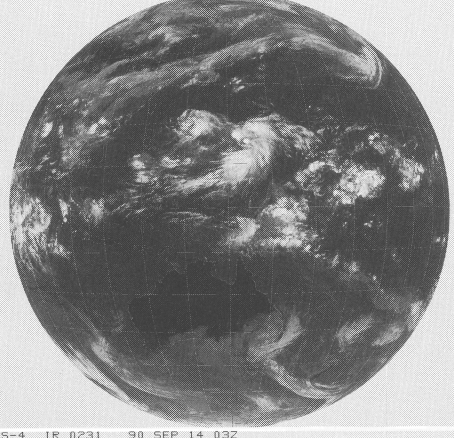
GMS-4 IR 0231 90 SEP 12 03Z



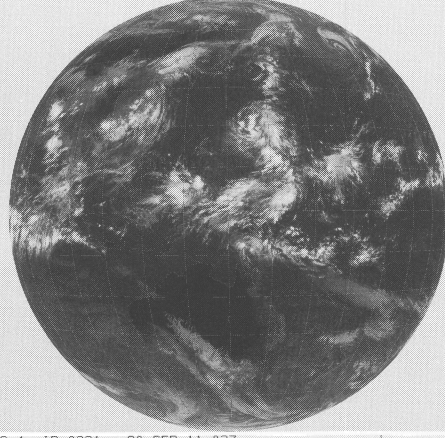
GMS-4 IR 0231 90 SEP 09 03Z



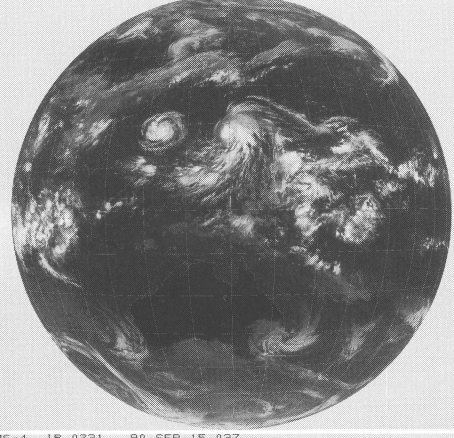
GMS-4 IR 0231 90 SEP 13 03Z



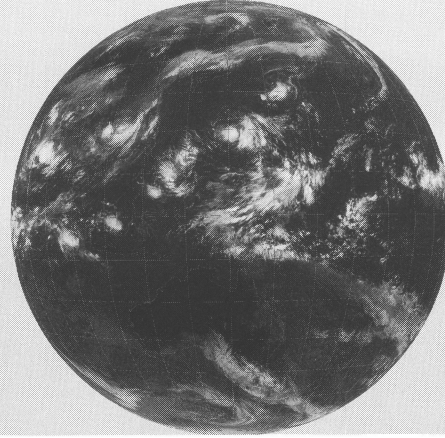
GMS-4 IR 0231 90 SEP 10 03Z



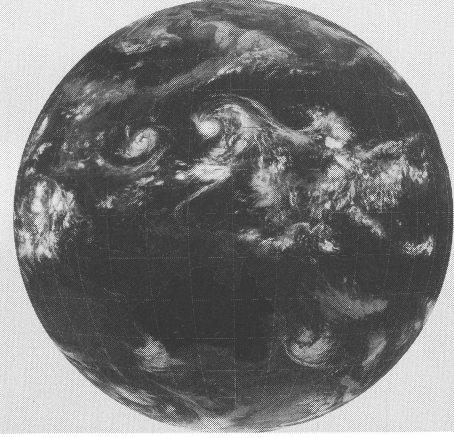
GMS-4 IR 0231 90 SEP 14 03Z



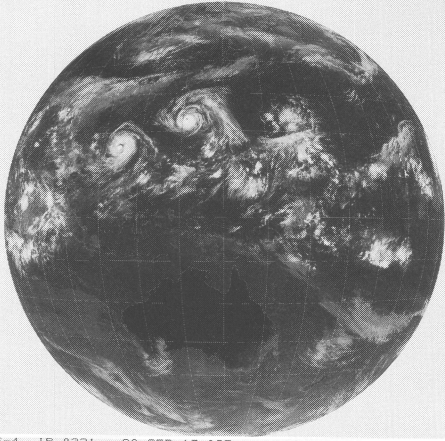
GMS-4 IR 0231 90 SEP 11 03Z



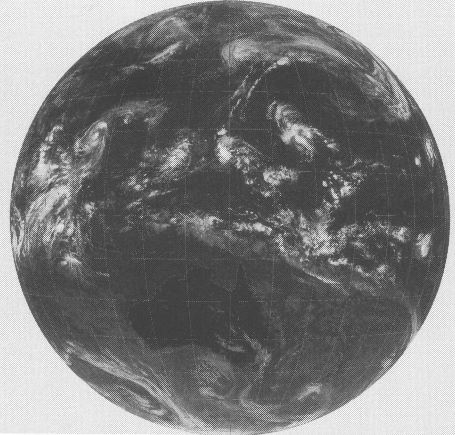
GMS-4 IR 0231 90 SEP 15 03Z



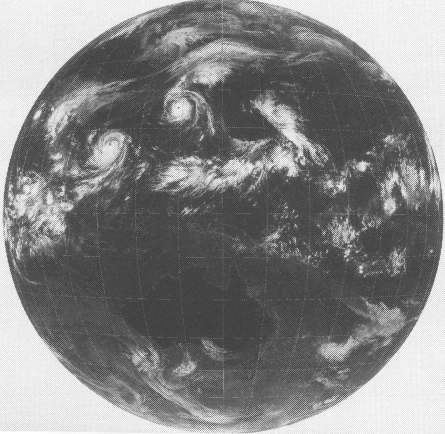
GMS-4 IR 0231 90 SEP 16 03Z



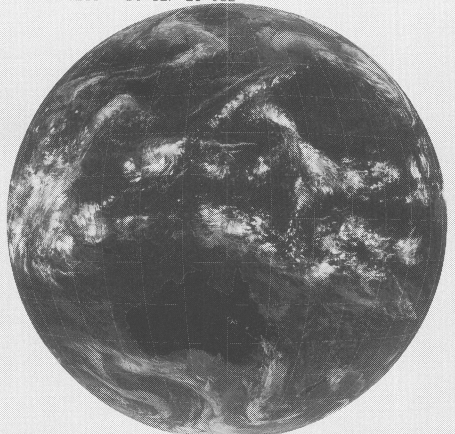
GMS-4 IR 0231 90 SEP 20 03Z



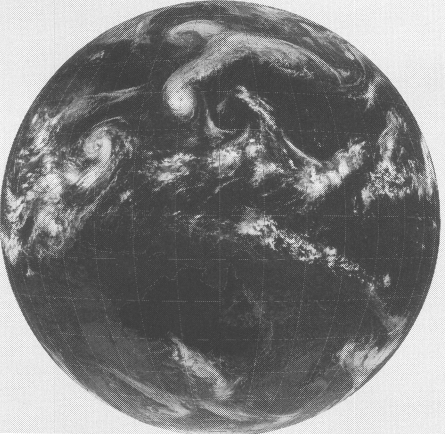
GMS-4 IR 0231 90 SEP 17 03Z



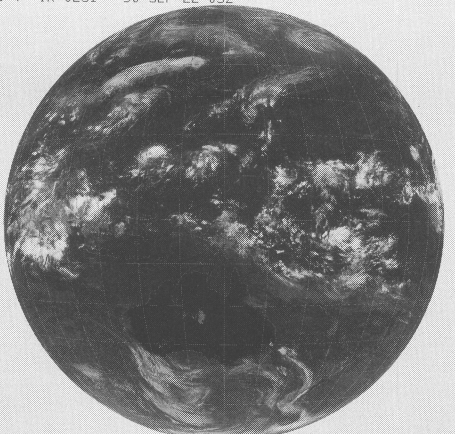
GMS-4 IR 0231 90 SEP 21 03Z



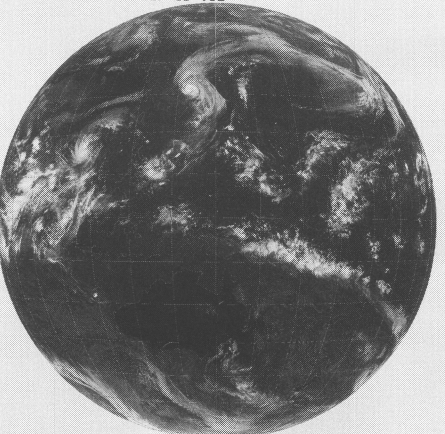
GMS-4 IR 0231 90 SEP 18 03Z



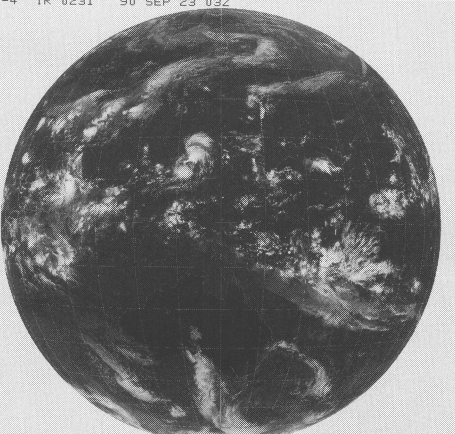
GMS-4 IR 0231 90 SEP 22 03Z



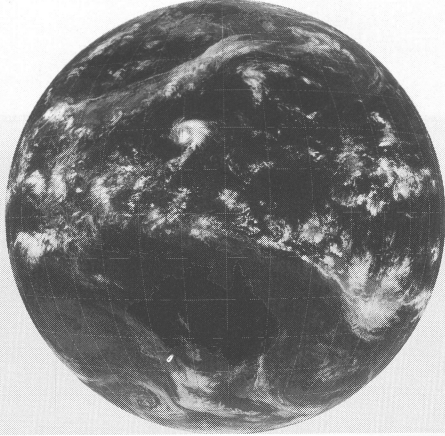
GMS-4 IR 0231 90 SEP 19 03Z



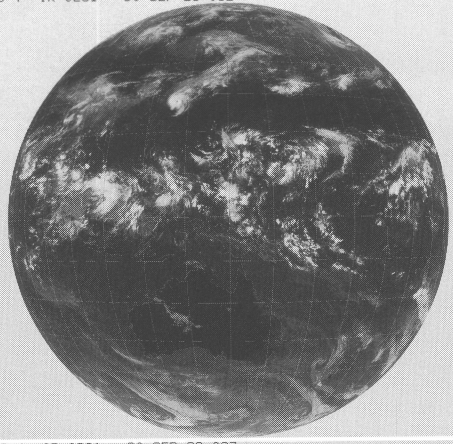
GMS-4 IR 0231 90 SEP 23 03Z



GMS-4 IR 0231 90 SEP 24 03Z



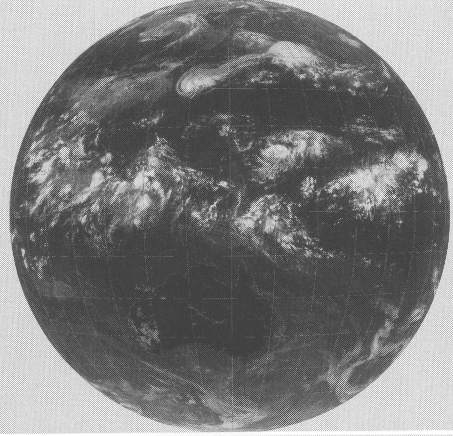
GMS-4 IR 0231 90 SEP 28 03Z



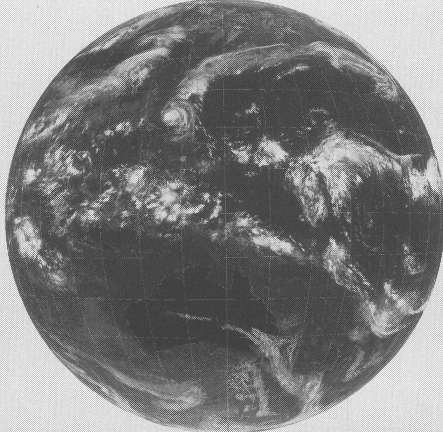
GMS-4 IR 0231 90 SEP 25 03Z



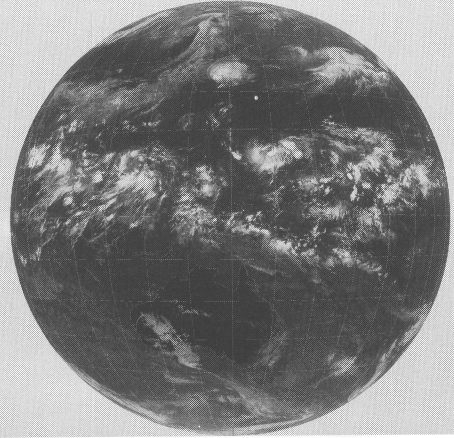
GMS-4 IR 0231 90 SEP 29 03Z



GMS-4 IR 0231 90 SEP 26 03Z



GMS-4 IR 0231 90 SEP 30 03Z



GMS-4 IR 0231 90 SEP 27 03Z

