

日々の衛星画像

1990年10月

(赤外画像)

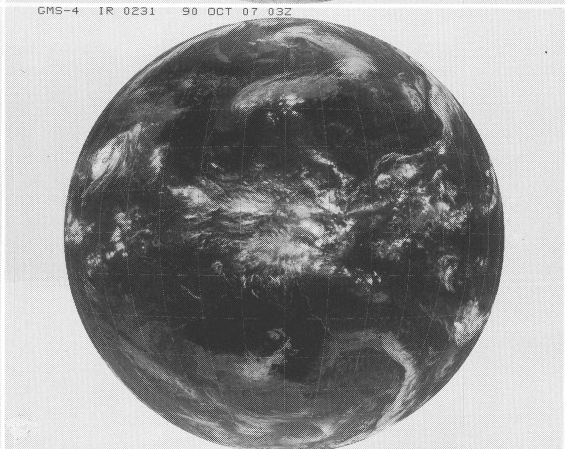
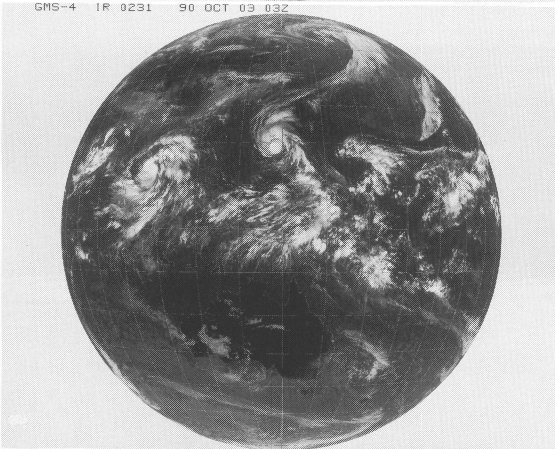
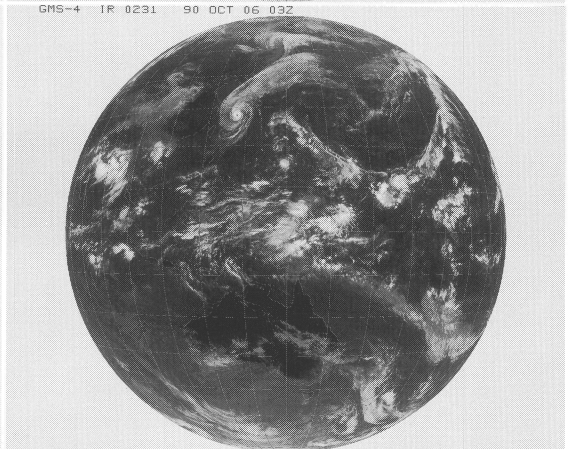
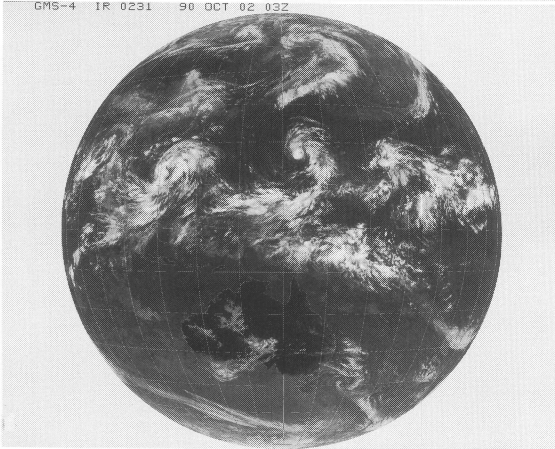
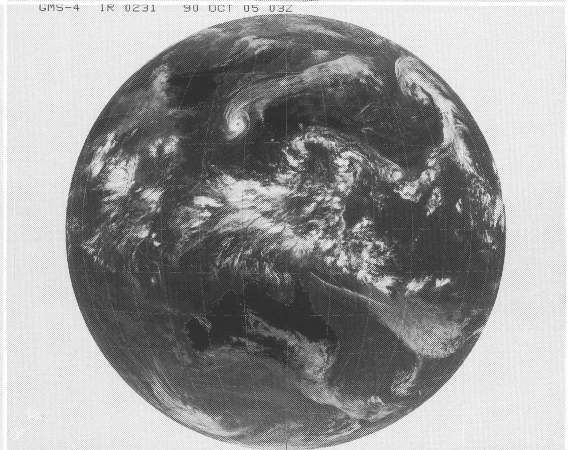
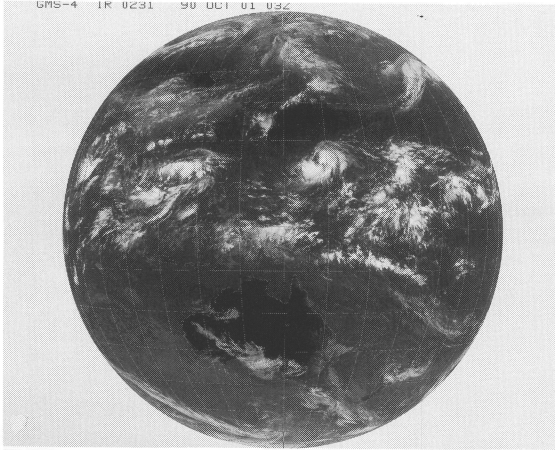
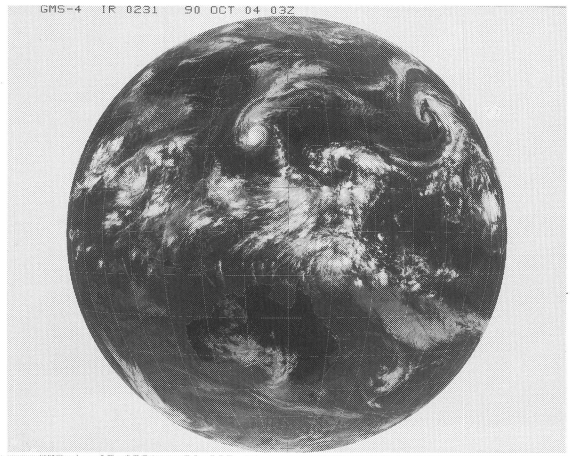
ひまわり4号

(表示例)

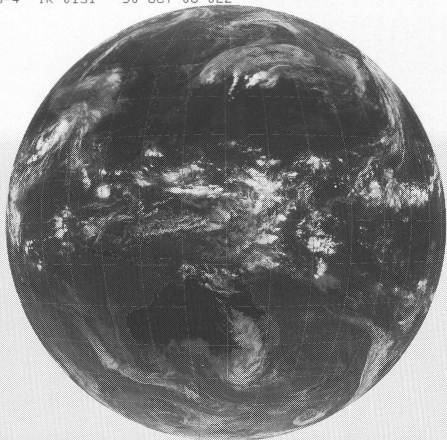
(気象庁提供)

ひまわり	赤外	撮像開始時分	年	月	日	時刻
GMS-4	IR	0231	85	OCT	01	03Z

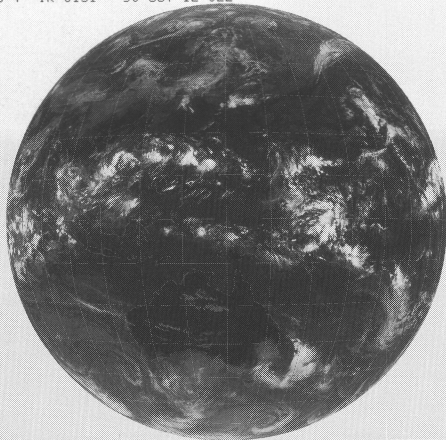
時刻は国際標準時で、9時間を加えると日本時間です。



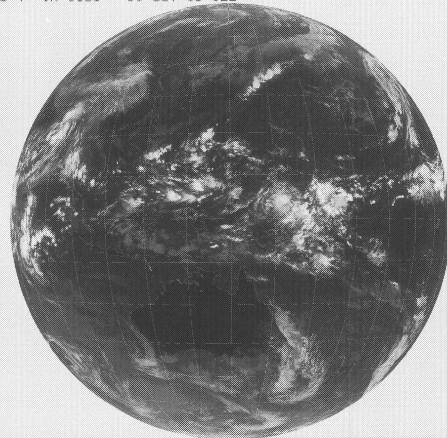
GMS-4 1R 0131 90 OCT 08 02Z



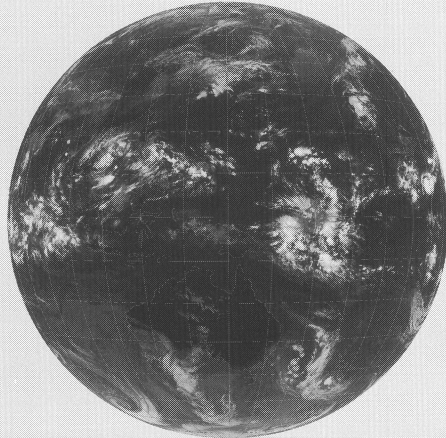
GMS-4 1R 0131 90 OCT 12 02Z



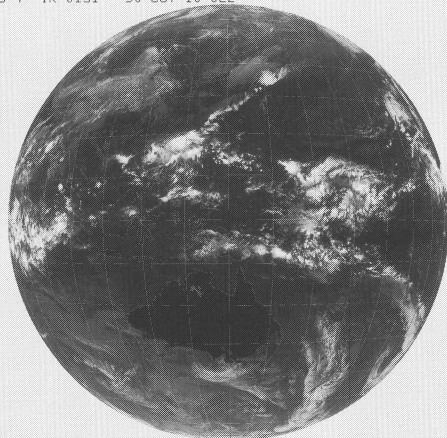
GMS-4 1R 0131 90 OCT 09 02Z



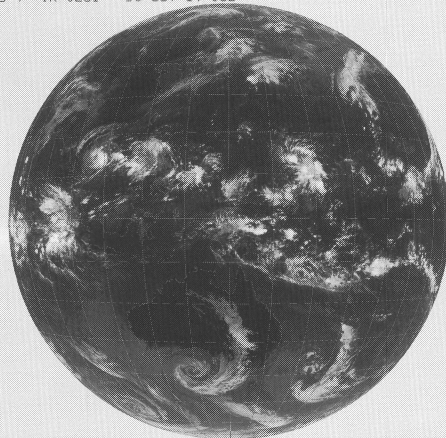
GMS-4 1R 0131 90 OCT 13 02Z



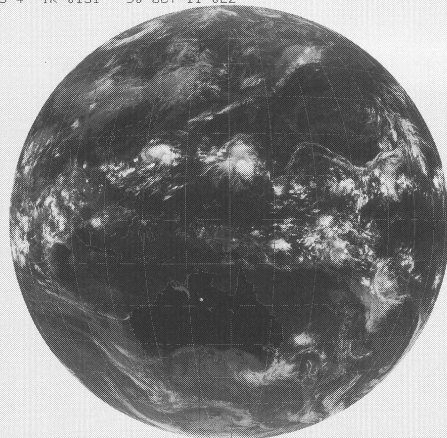
GMS-4 1R 0131 90 OCT 10 02Z



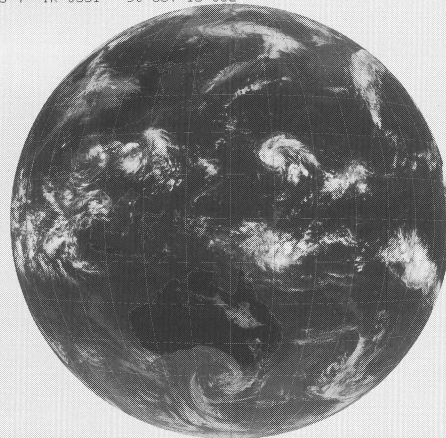
GMS-4 1R 0231 90 OCT 14 03Z



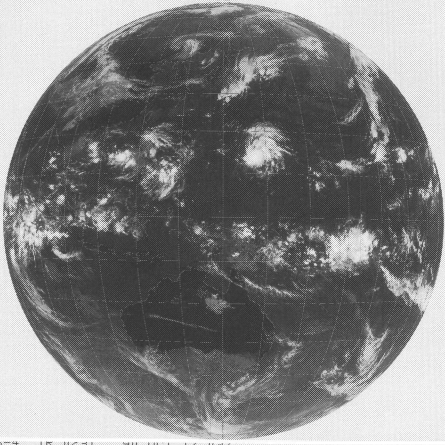
GMS-4 1R 0131 90 OCT 11 02Z



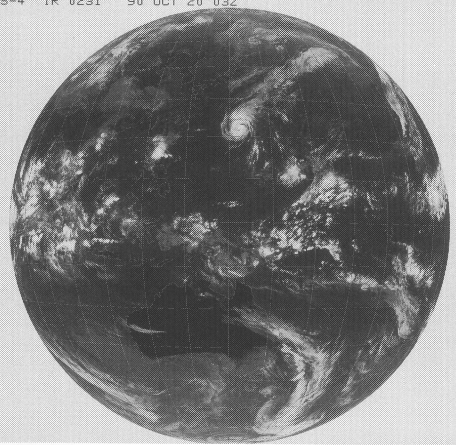
GMS-4 1R 0331 90 OCT 15 03Z



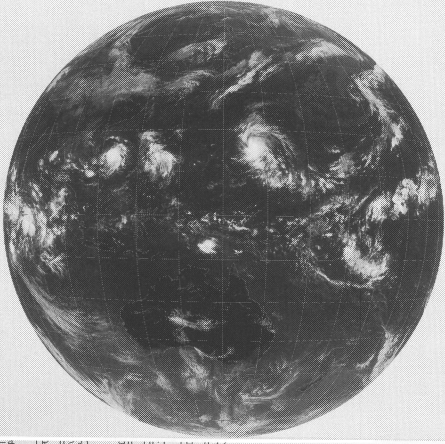
GMS-4 IR 0231 90 OCT 16 03Z



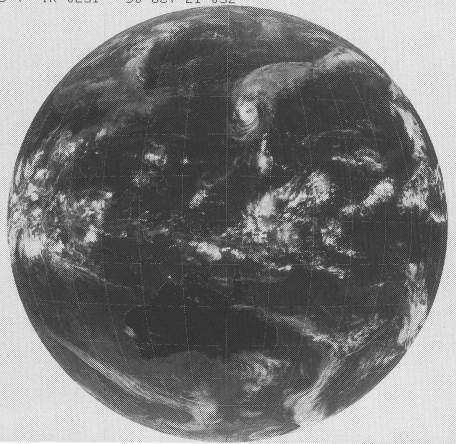
GMS-4 IR 0231 90 OCT 20 03Z



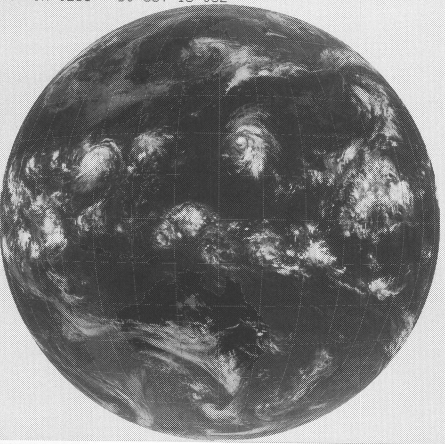
GMS-4 IR 0231 90 OCT 17 03Z



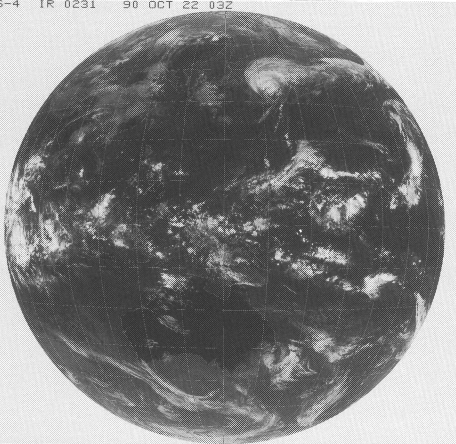
GMS-4 IR 0231 90 OCT 21 03Z



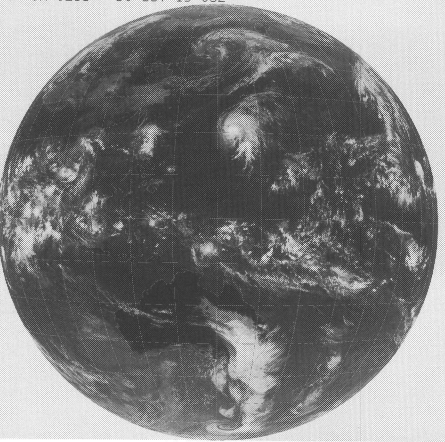
GMS-4 IR 0231 90 OCT 18 03Z



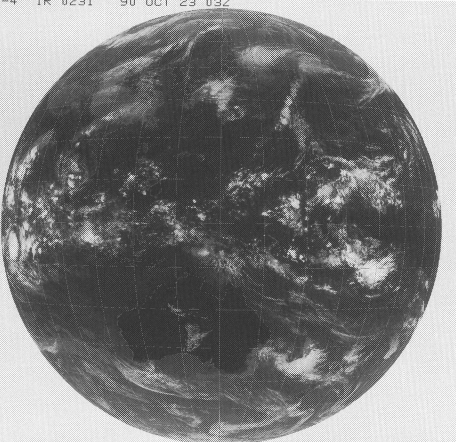
GMS-4 IR 0231 90 OCT 22 03Z



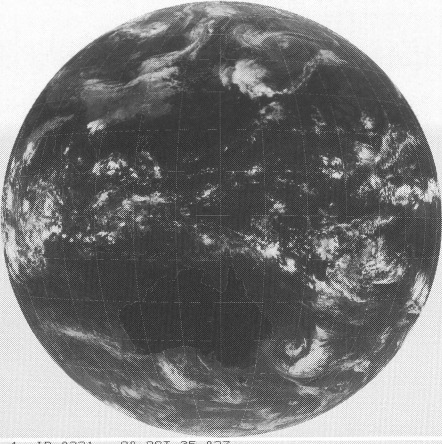
GMS-4 IR 0231 90 OCT 19 03Z



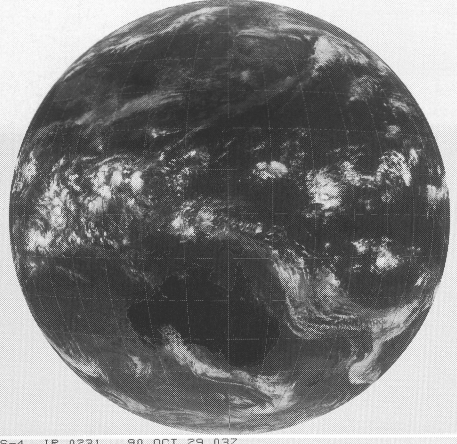
GMS-4 IR 0231 90 OCT 23 03Z



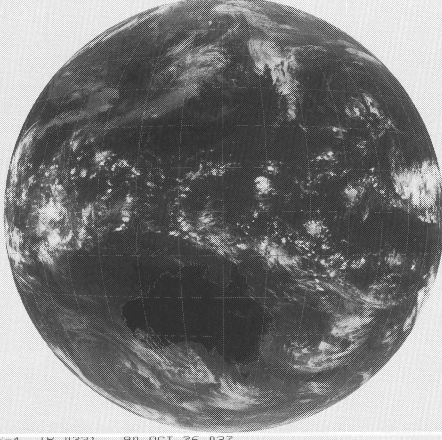
GMS-4 1R 0231 90 OCT 24 03Z



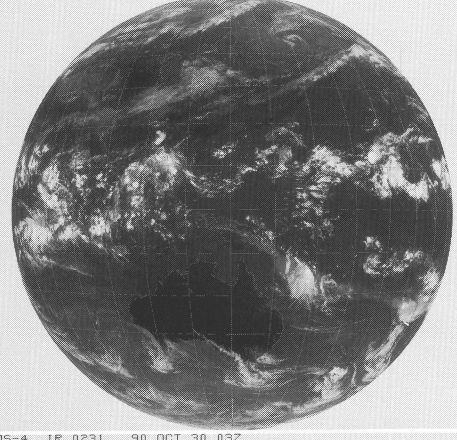
GMS-4 1R 0231 90 OCT 28 03Z



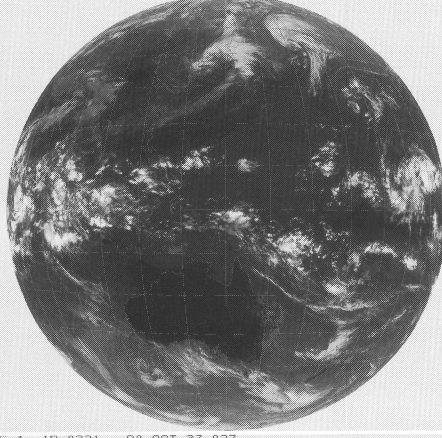
GMS-4 1R 0231 90 OCT 25 03Z



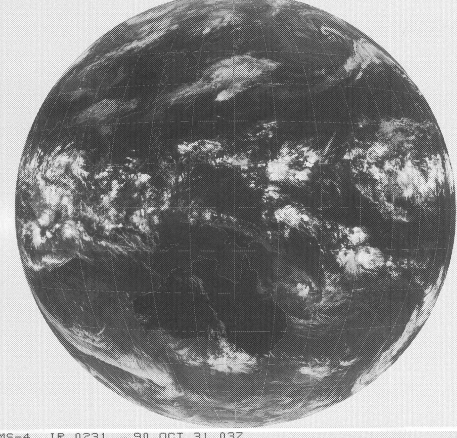
GMS-4 1R 0231 90 OCT 29 03Z



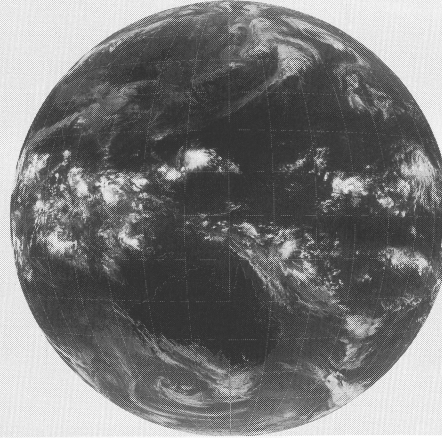
GMS-4 1R 0231 90 OCT 26 03Z



GMS-4 1R 0231 90 OCT 30 03Z



GMS-4 1R 0231 90 OCT 27 03Z



GMS-4 1R 0231 90 OCT 31 03Z

