

# 日々の衛星画像

## 1990年12月 (赤外画像)

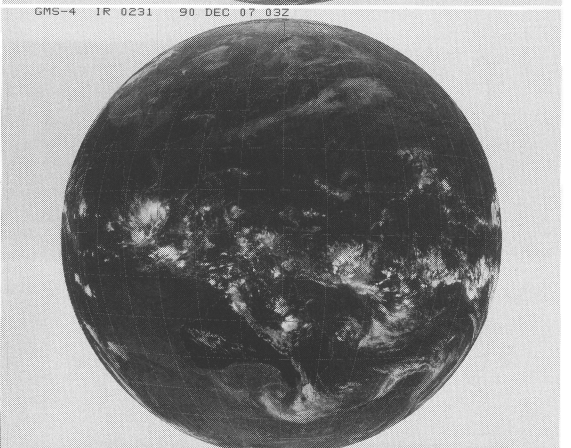
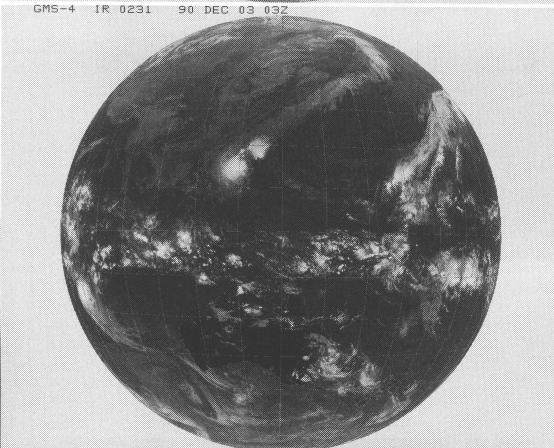
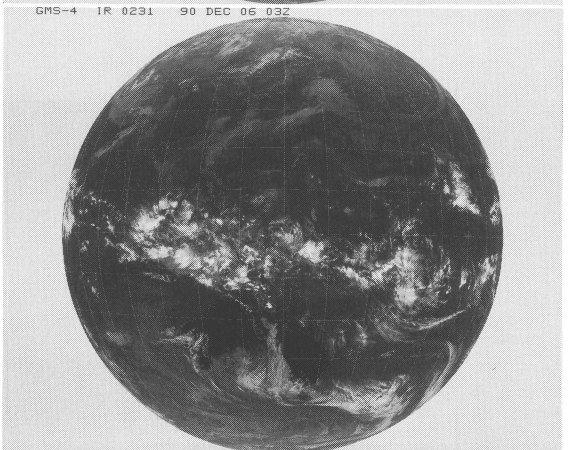
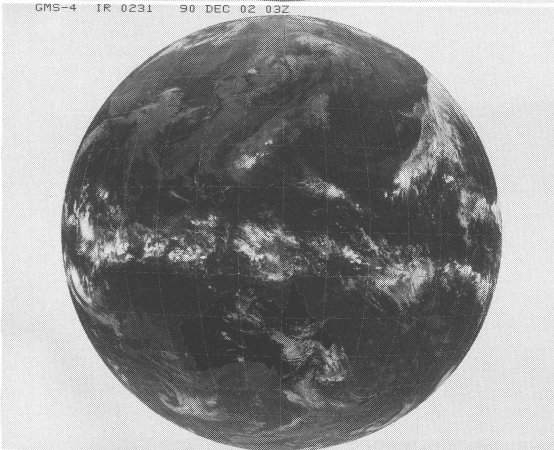
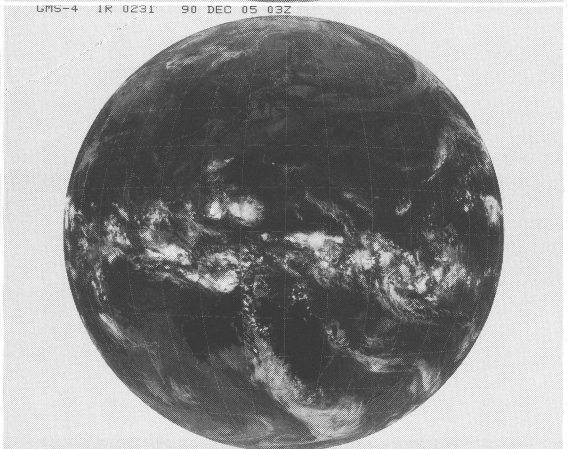
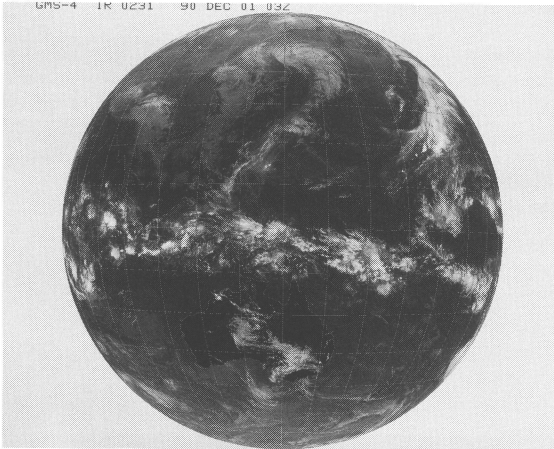
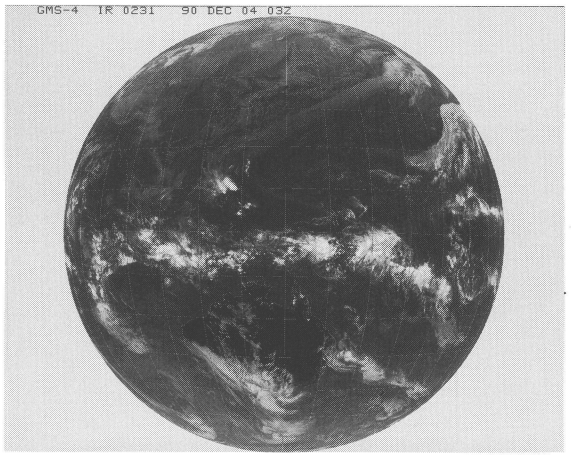
ひまわり4号

(表示例)

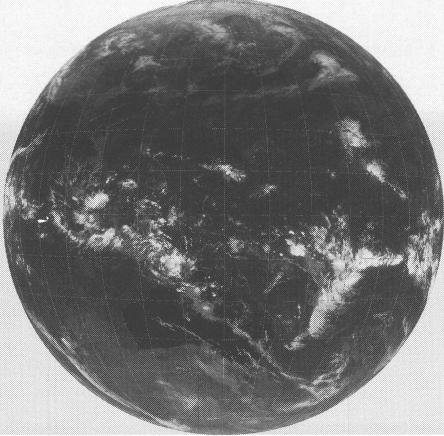
(気象庁提供)

ひまわり	赤外	撮像開始時分	年	月	日	時刻
GMS-4	IR	0231	90	OCT	01	03Z

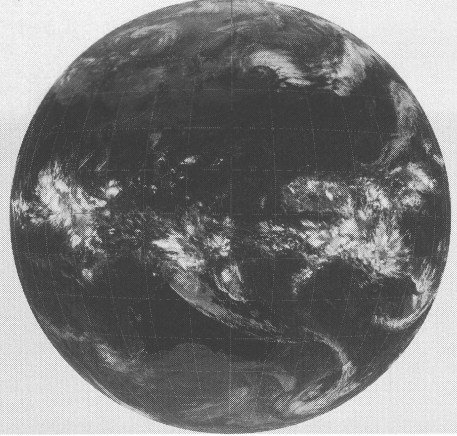
時刻は国際標準時で、9時間を加えると日本時間です。



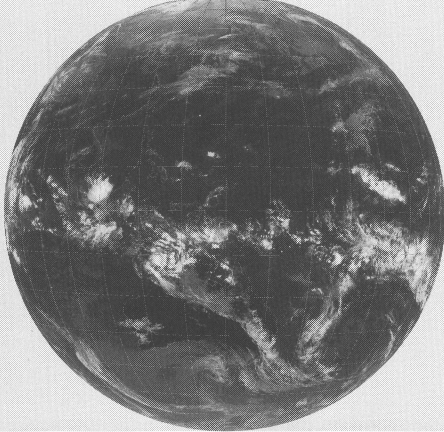
GMS-4 IR 0231 90 DEC 08 03Z



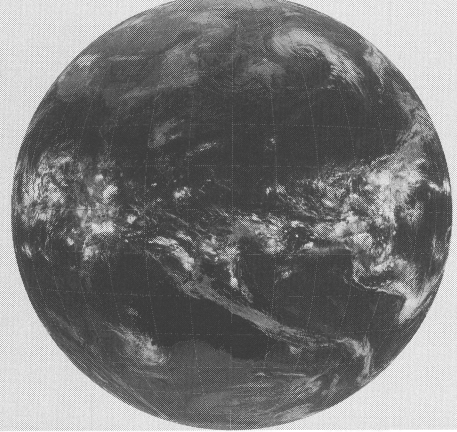
GMS-4 IR 0231 90 DEC 12 03Z



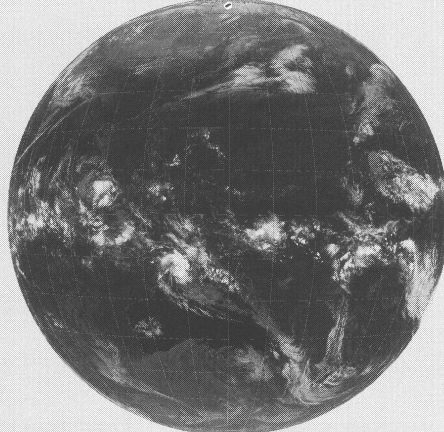
GMS-4 IR 0231 90 DEC 09 03Z



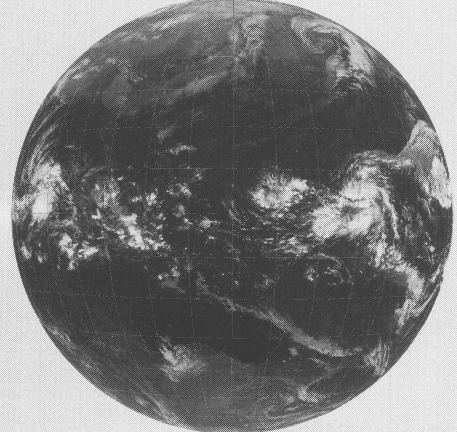
GMS-4 IR 0231 90 DEC 13 03Z



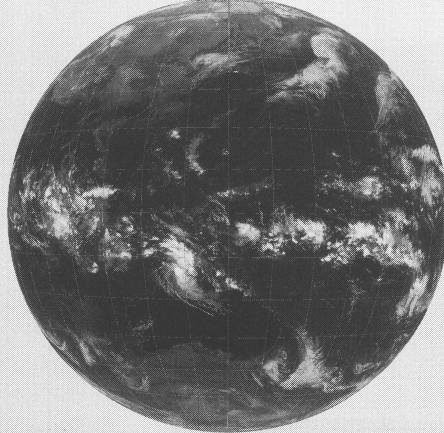
GMS-4 IR 0231 90 DEC 10 03Z



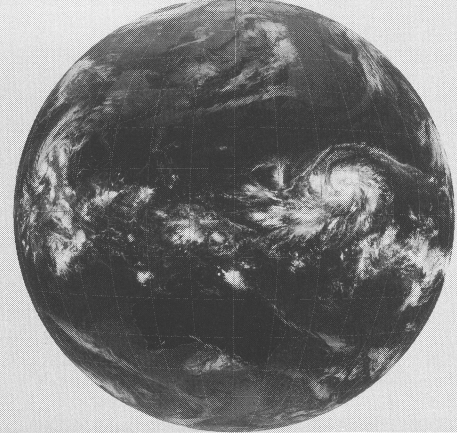
GMS-4 IR 0231 90 DEC 14 03Z



GMS-4 IR 0231 90 DEC 11 03Z



GMS-4 IR 0231 90 DEC 15 03Z

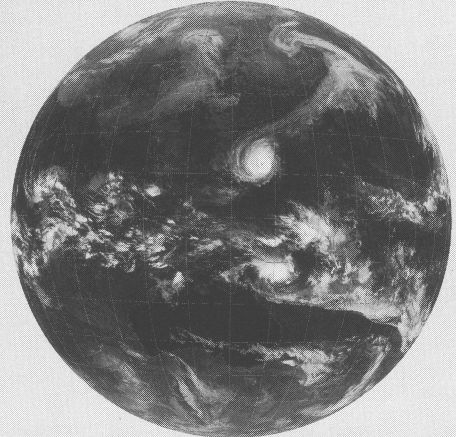




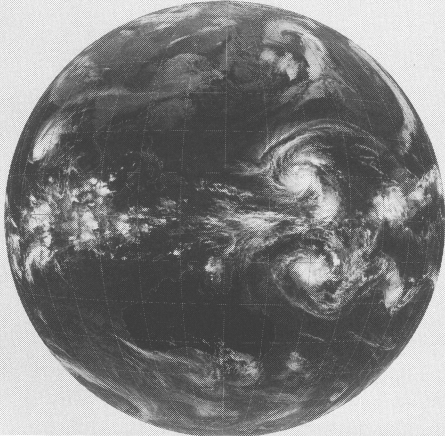
GMS-4 IR 0231 90 DEC 16 03Z



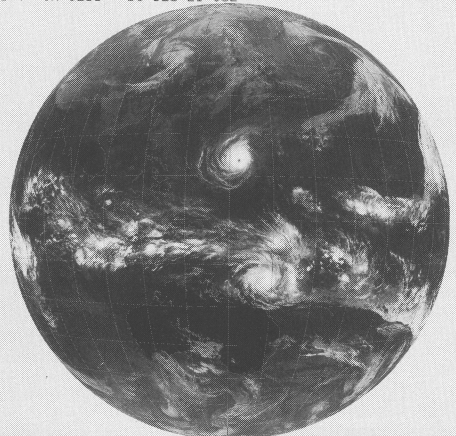
GMS-4 IR 0231 90 DEC 20 03Z



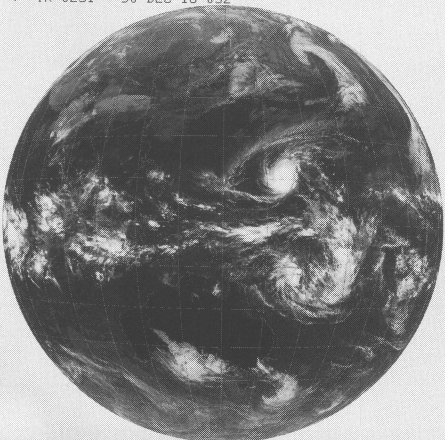
GMS-4 IR 0231 90 DEC 17 03Z



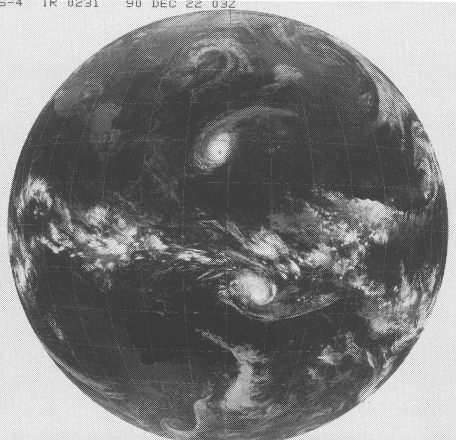
GMS-4 IR 0231 90 DEC 21 03Z



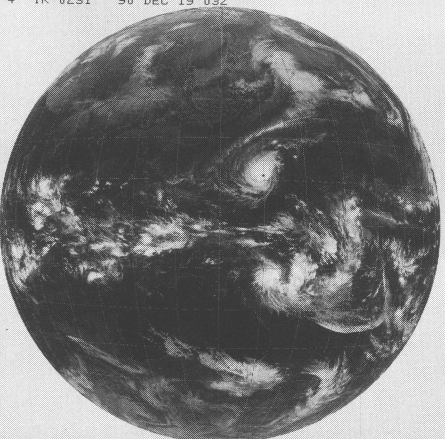
GMS-4 IR 0231 90 DEC 18 03Z



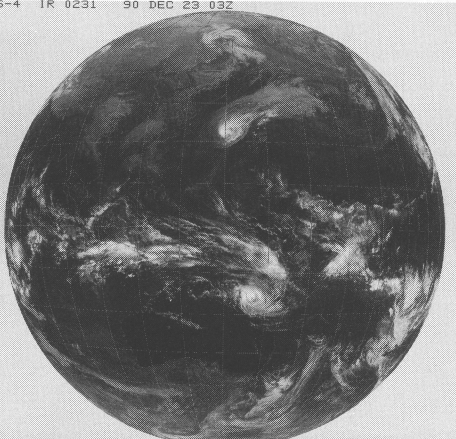
GMS-4 IR 0231 90 DEC 22 03Z



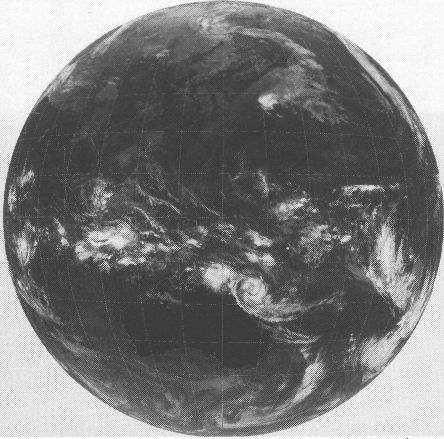
GMS-4 IR 0231 90 DEC 19 03Z



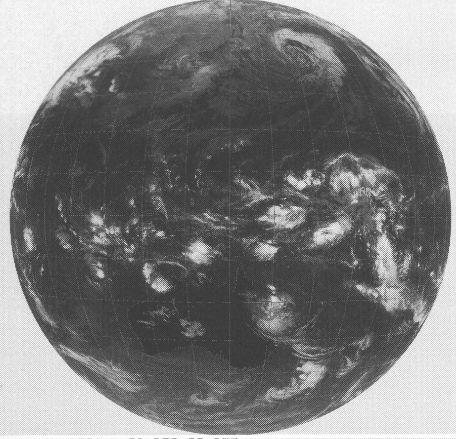
GMS-4 IR 0231 90 DEC 23 03Z



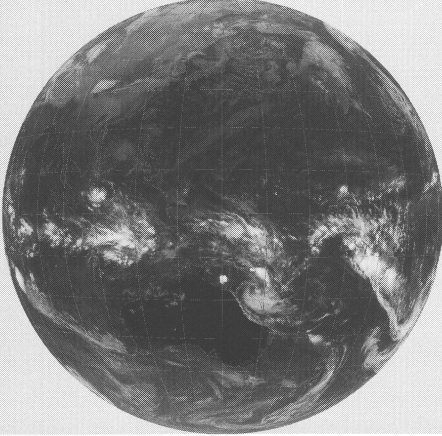
GMS-4 IR 0231 90 DEC 24 03Z



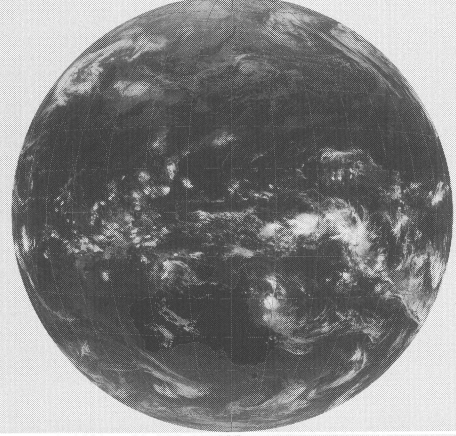
GMS-4 IR 0231 90 DEC 28 03Z



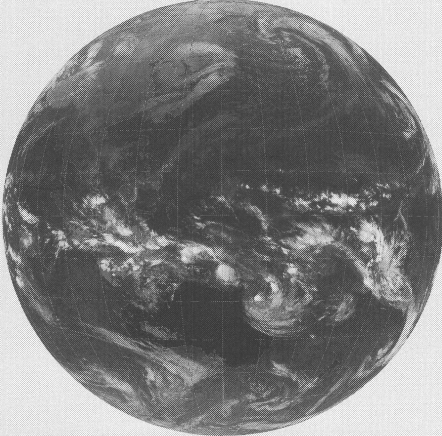
GMS-4 IR 2331 90 DEC 25 00Z



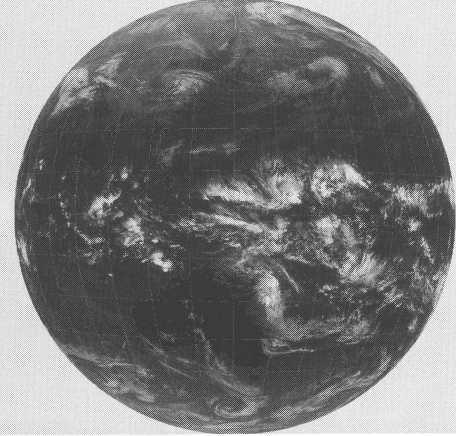
GMS-4 IR 0231 90 DEC 29 03Z



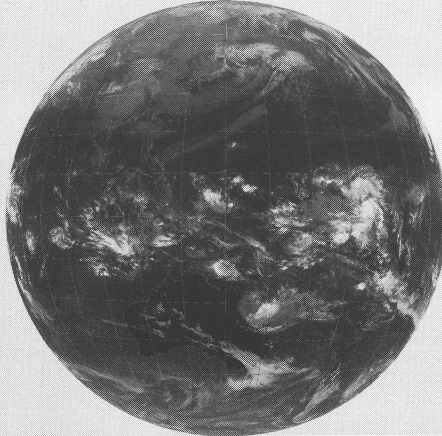
GMS-4 IR 2331 90 DEC 26 00Z



GMS-4 IR 0231 90 DEC 30 03Z



GMS-4 IR 0231 90 DEC 27 03Z



GMS-4 IR 0231 90 DEC 31 03Z

