

日々の衛星画像

1991年 4 月

(赤外画像)

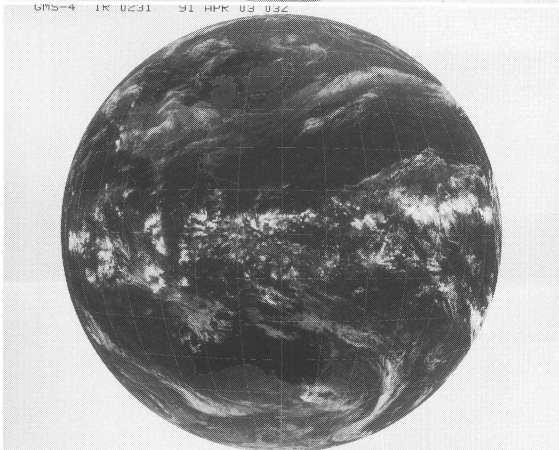
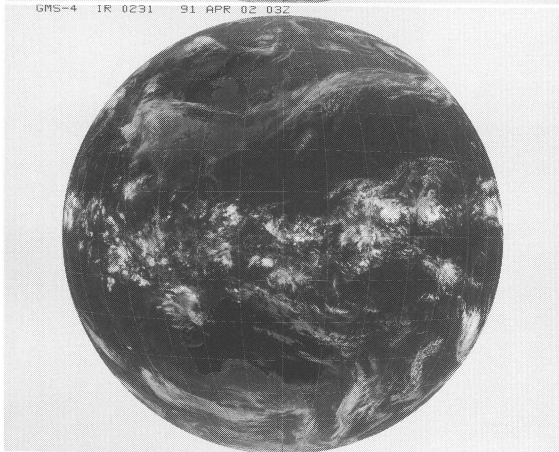
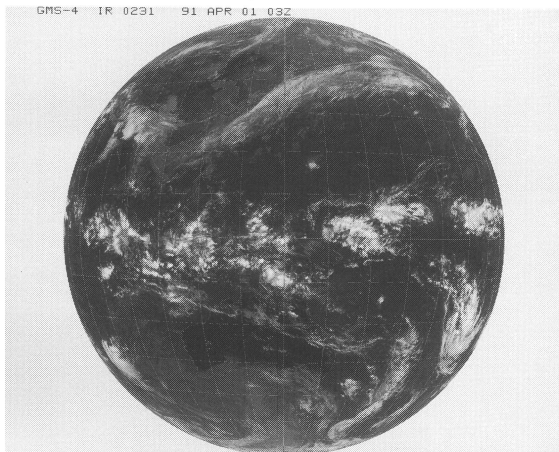
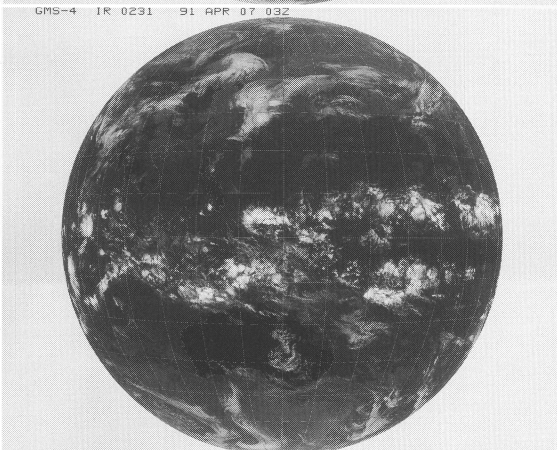
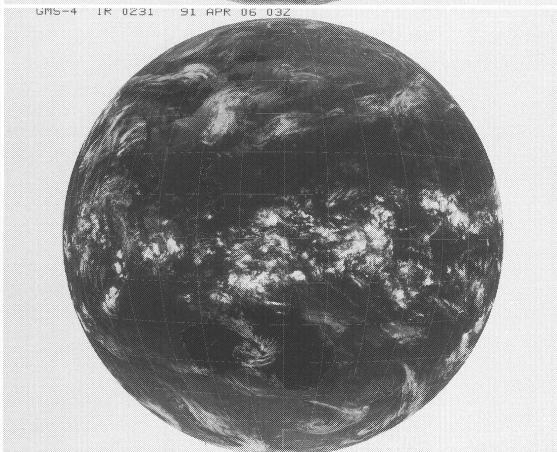
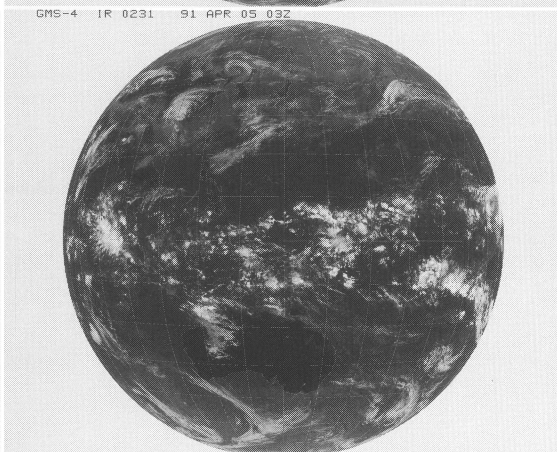
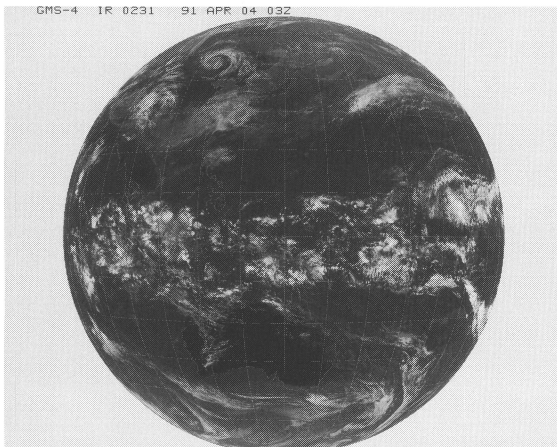
ひまわり 4号

(表示例)

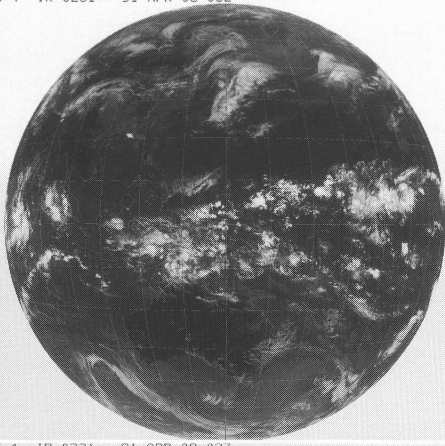
(気象庁提供)

ひまわり	赤外	撮像開始時分	年	月	日	時刻
GMS-4	IR	0231	91	OCT	01	03Z

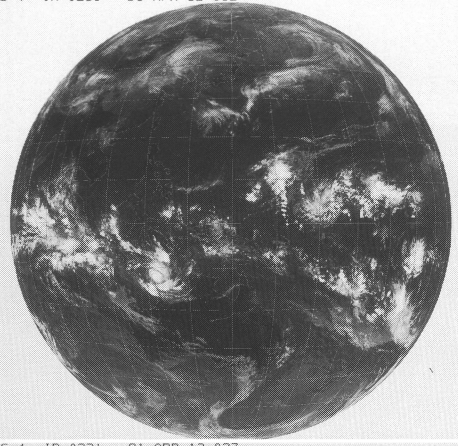
時刻は国際標準時で、9時間を加えると日本時間です。



GMS-4 IR 0231 91 APR 08 03Z



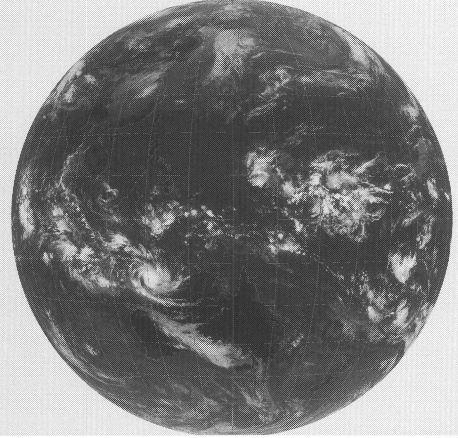
GMS-4 IR 0231 91 APR 12 03Z



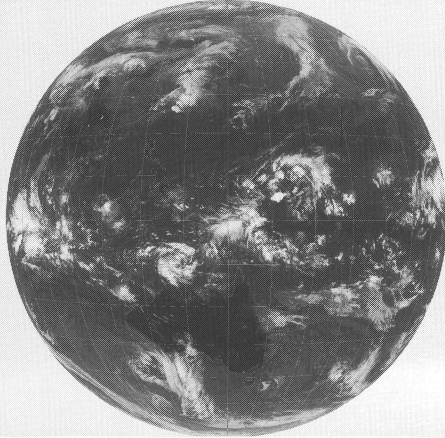
GMS-4 IR 0231 91 APR 09 03Z



GMS-4 IR 0231 91 APR 13 03Z



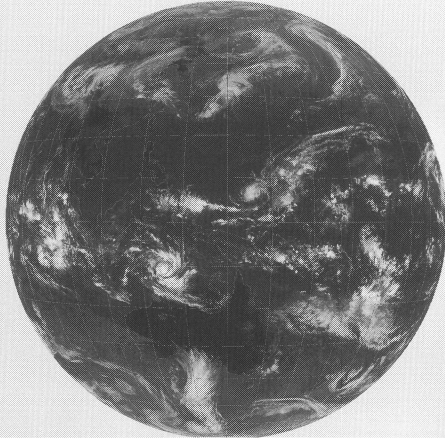
GMS-4 IR 0231 91 APR 10 03Z



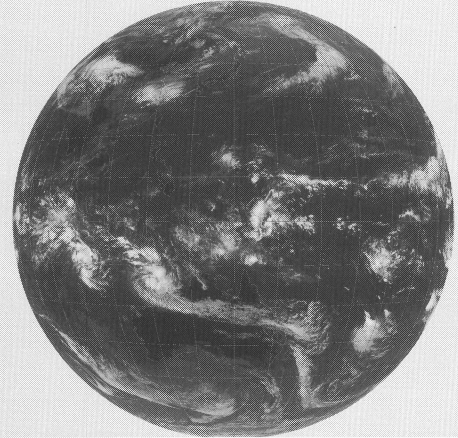
GMS-4 IR 0231 91 APR 14 03Z



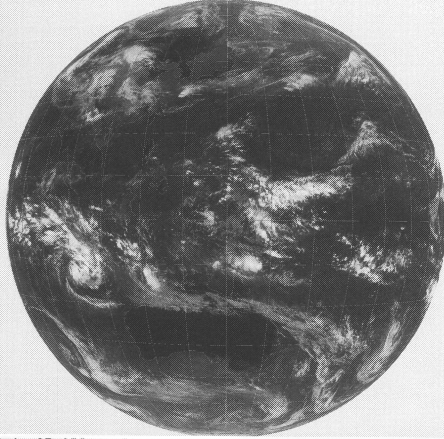
GMS-4 IR 0231 91 APR 11 03Z



GMS-4 IR 0231 91 APR 15 03Z



GMS-4 IR 0231 91 APR 16 03Z



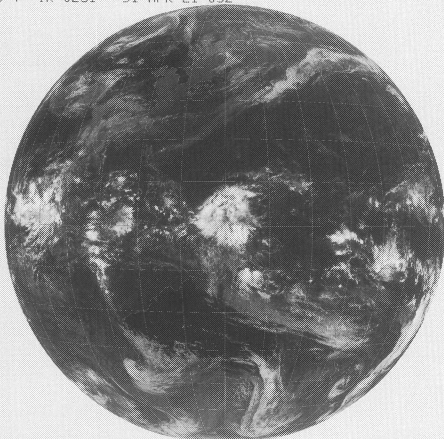
GMS-4 IR 0231 91 APR 20 03Z



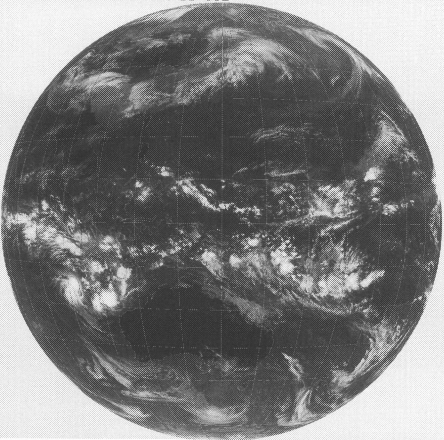
GMS-4 IR 0231 91 APR 17 03Z



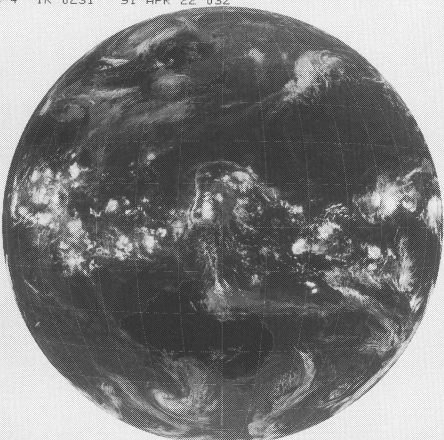
GMS-4 IR 0231 91 APR 21 03Z



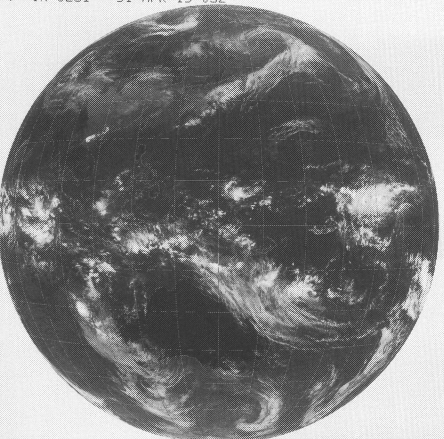
GMS-4 IR 0231 91 APR 18 03Z



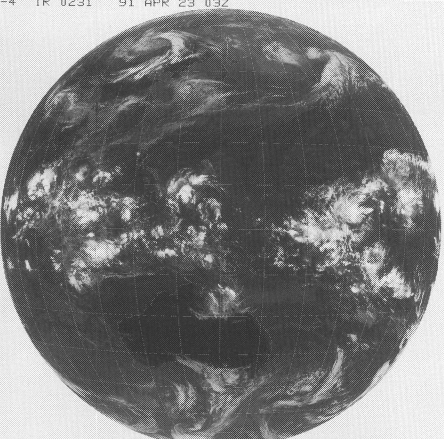
GMS-4 IR 0231 91 APR 22 03Z



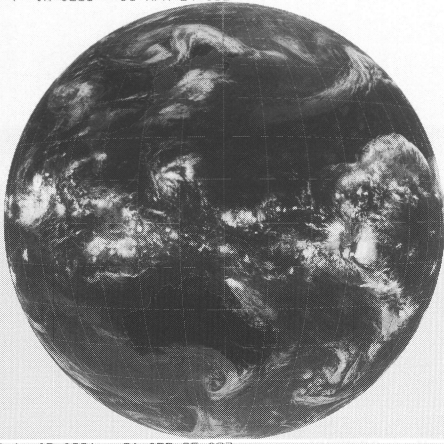
GMS-4 IR 0231 91 APR 19 03Z



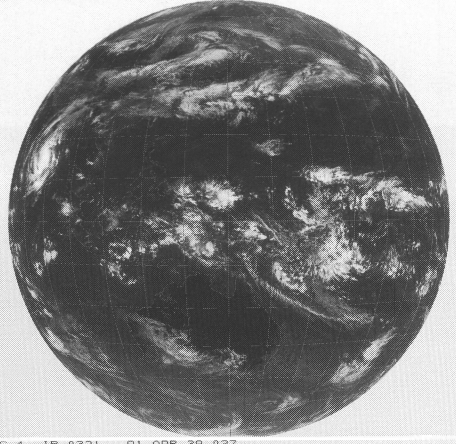
GMS-4 IR 0231 91 APR 23 03Z



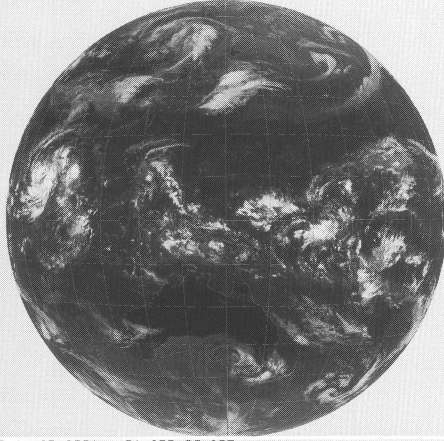
GMS-4 IR 0231 91 APR 24 03Z



GMS-4 IR 0231 91 APR 28 03Z



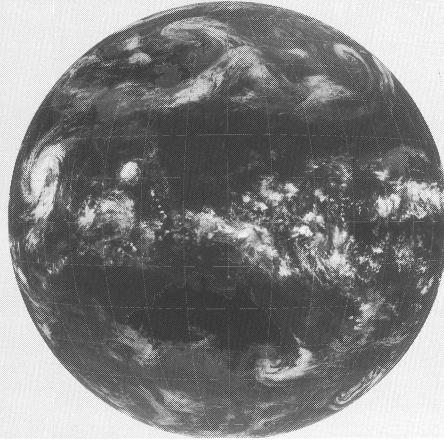
GMS-4 IR 0231 91 APR 25 03Z



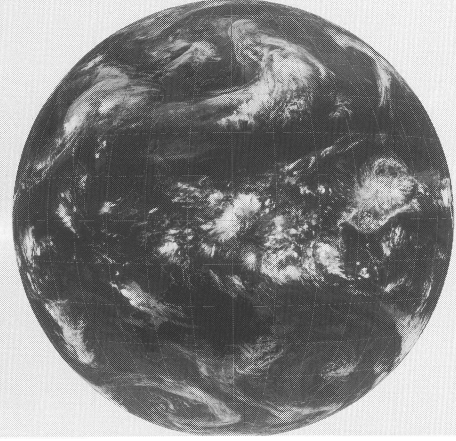
GMS-4 IR 0231 91 APR 29 03Z



GMS-4 IR 0231 91 APR 26 03Z



GMS-4 IR 0231 91 APR 30 03Z



GMS-4 IR 0231 91 APR 27 03Z

