

日々の衛星画像

1991年 9 月

ひまわり 4 号

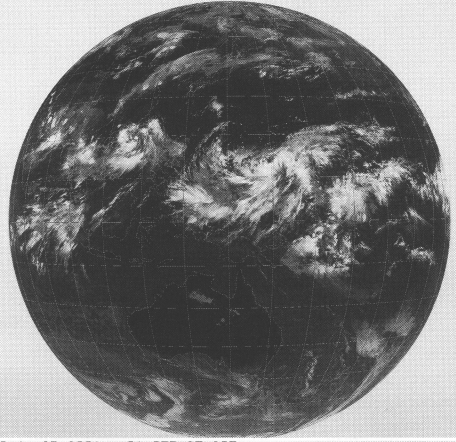
(表示例)

(気象庁提供)

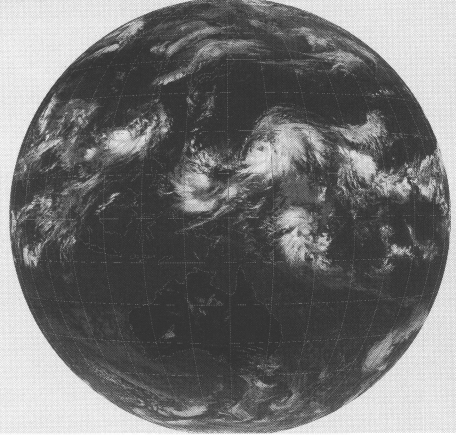
ひまわり	赤外	撮像開始時分	年	月	日	時刻
GMS-4	IR	0231	91	OCT	01	03Z

時刻は国際標準時で、9 時間を加えると日本時間です。

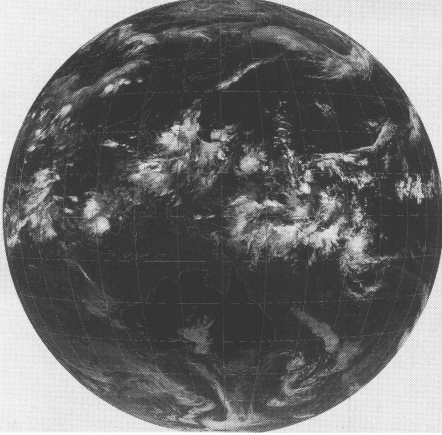
GMS-4 IR 0231 91 SEP 04 03Z



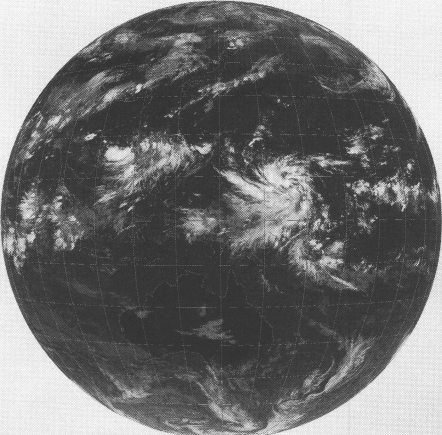
GMS-4 IR 0231 91 SEP 05 03Z



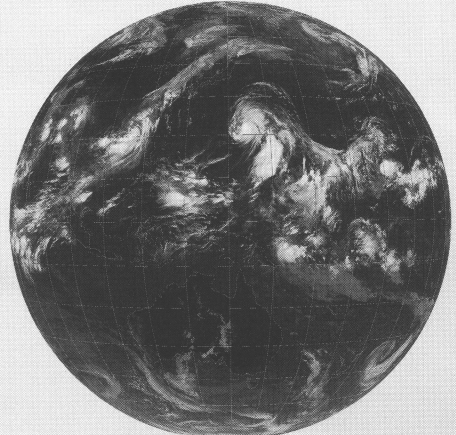
GMS-4 IR 0231 91 SEP 01 03Z



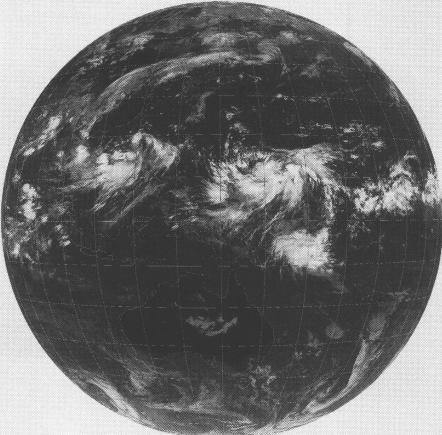
GMS-4 IR 0231 91 SEP 02 03Z



GMS-4 IR 0231 91 SEP 06 03Z



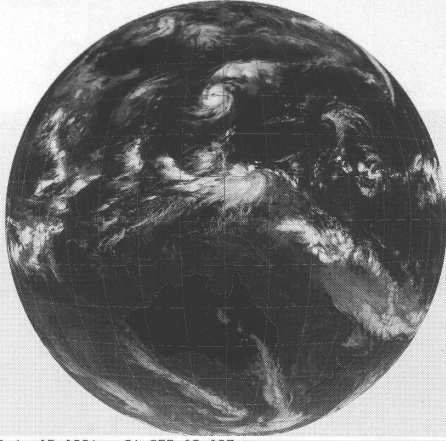
GMS-4 IR 0231 91 SEP 03 03Z



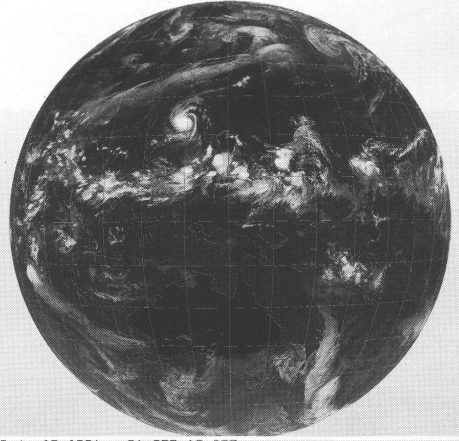
GMS-4 IR 0231 91 SEP 07 03Z



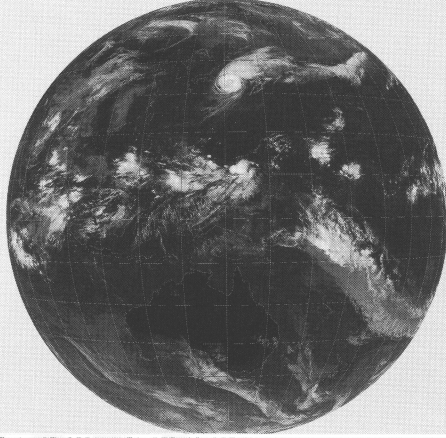
GMS-4 IR 0231 91 SEP 08 03Z



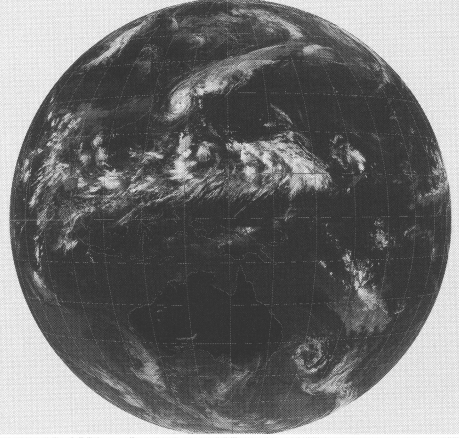
GMS-4 IR 0231 91 SEP 12 03Z



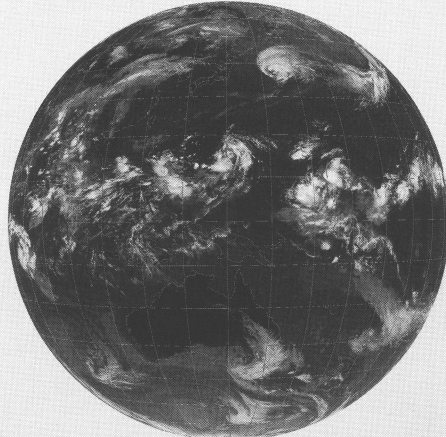
GMS-4 IR 0231 91 SEP 09 03Z



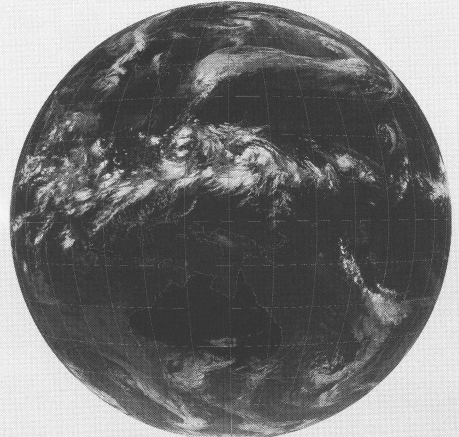
GMS-4 IR 0231 91 SEP 13 03Z



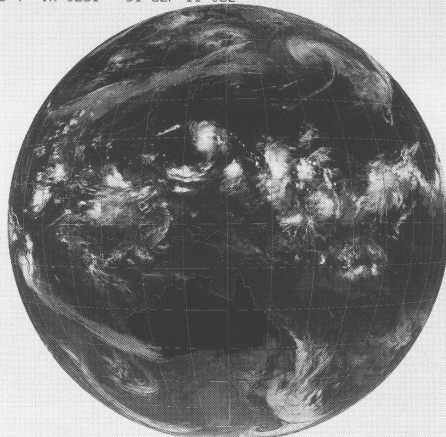
GMS-4 IR 0231 91 SEP 10 03Z



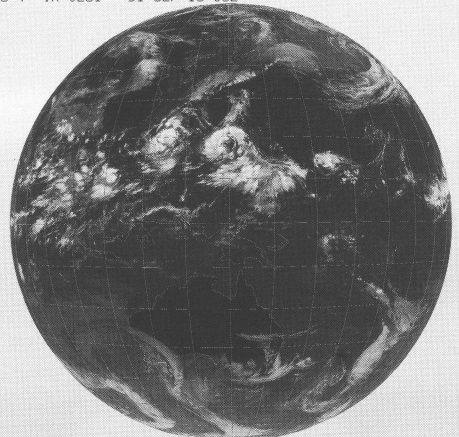
GMS-4 IR 0231 91 SEP 14 03Z



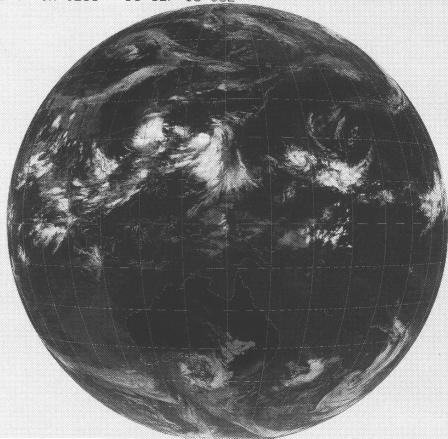
GMS-4 IR 0231 91 SEP 11 03Z



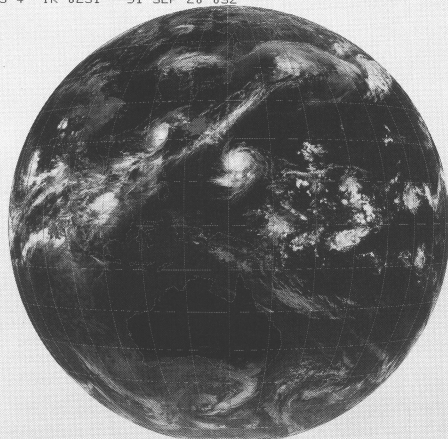
GMS-4 IR 0231 91 SEP 15 03Z



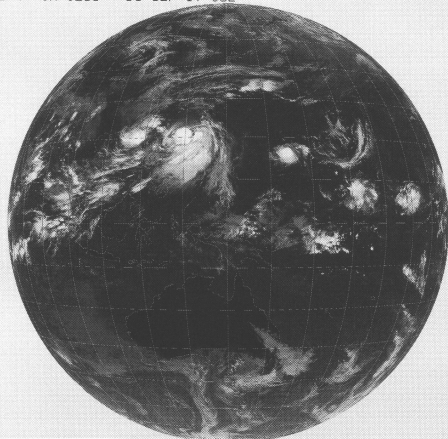
GMS-4 IR 0231 91 SEP 16 03Z



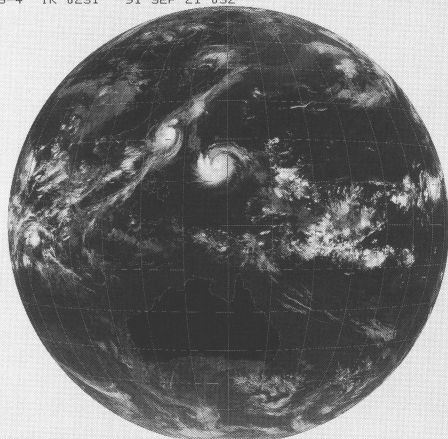
GMS-4 IR 0231 91 SEP 20 03Z



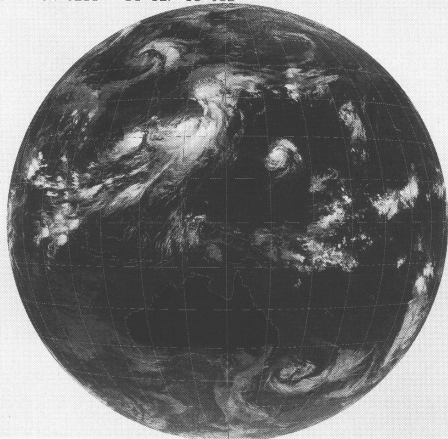
GMS-4 IR 0231 91 SEP 17 03Z



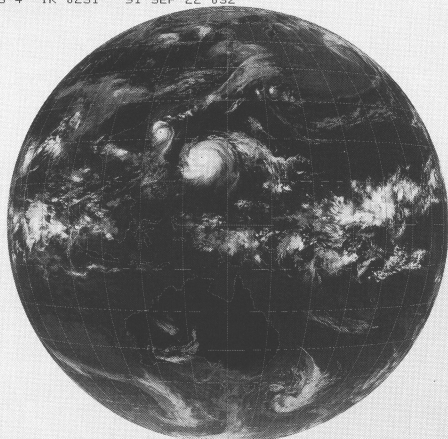
GMS-4 IR 0231 91 SEP 21 03Z



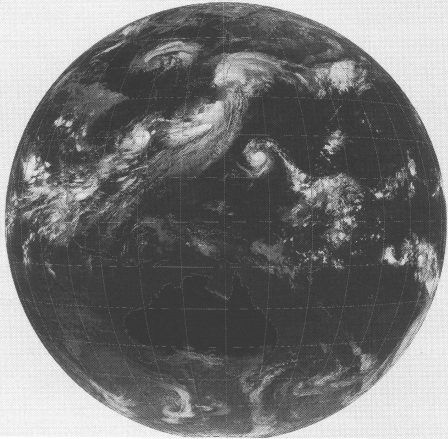
GMS-4 IR 0231 91 SEP 18 03Z



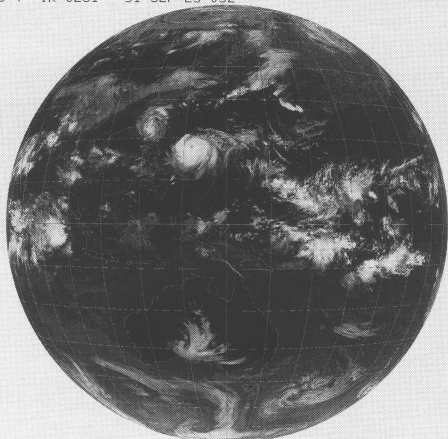
GMS-4 IR 0231 91 SEP 22 03Z



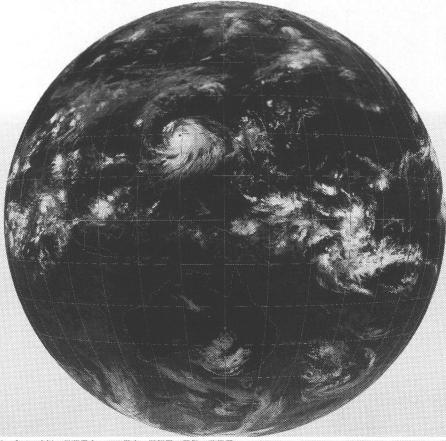
GMS-4 IR 0231 91 SEP 19 03Z



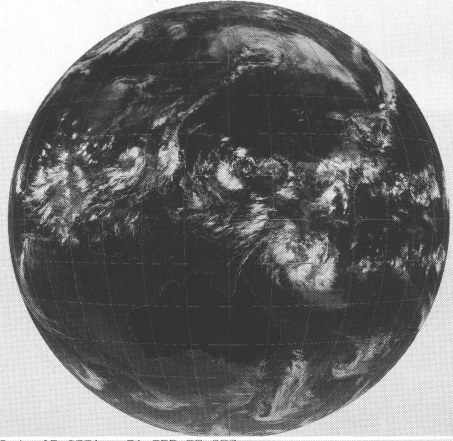
GMS-4 IR 0231 91 SEP 23 03Z



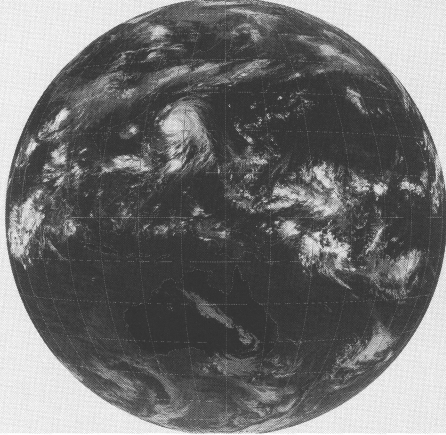
GMS-4 IR 0231 91 SEP 24 03Z



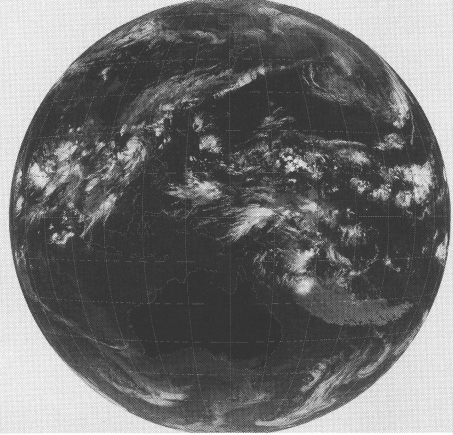
GMS-4 IR 0231 91 SEP 28 03Z



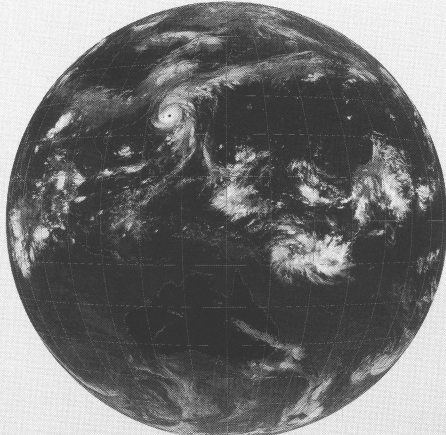
GMS-4 IR 0231 91 SEP 25 03Z



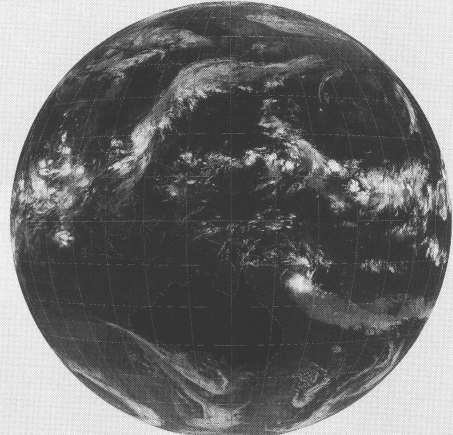
GMS-4 IR 0231 91 SEP 29 03Z



GMS-4 IR 0231 91 SEP 26 03Z



GMS-4 IR 0231 91 SEP 30 03Z



GMS-4 IR 0231 91 SEP 27 03Z

