

日々の衛星画像

1995年 4 月

(赤外画像)

ひまわり4号

(表示例)

(気象庁提供)

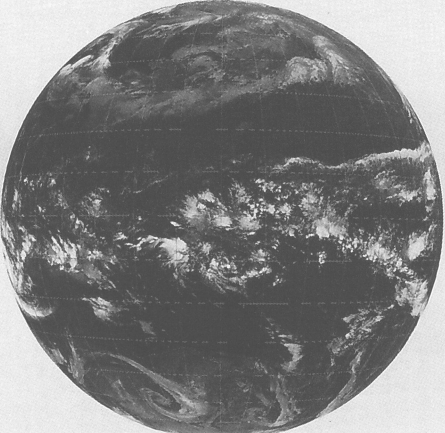
ひまわり	赤外	撮像開始時分	年	月	日	時刻
GMS-4	IR	0231	91	OCT	01	03Z

時刻は国際標準時で、9時間を加えると日本時間です。

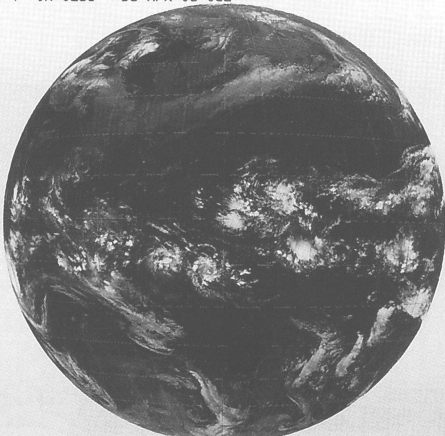
GMS-4 IR 0231 95 APR 01 03Z



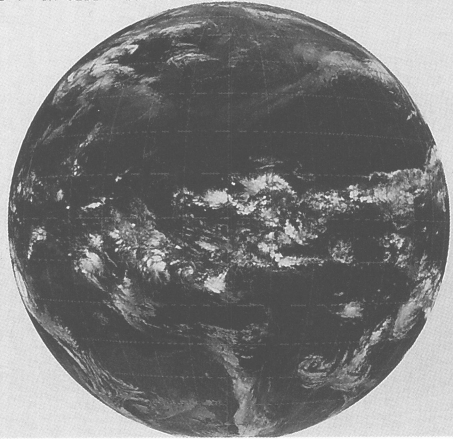
GMS-4 IR 0231 95 APR 02 03Z



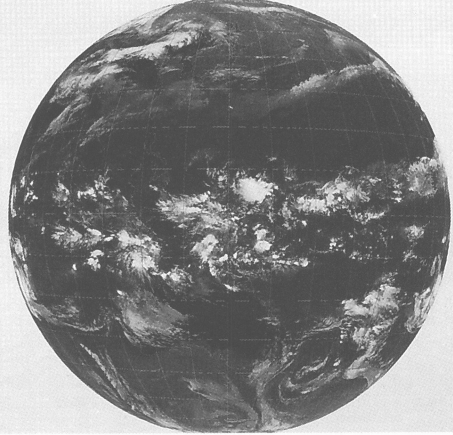
GMS-4 IR 0231 95 APR 03 03Z



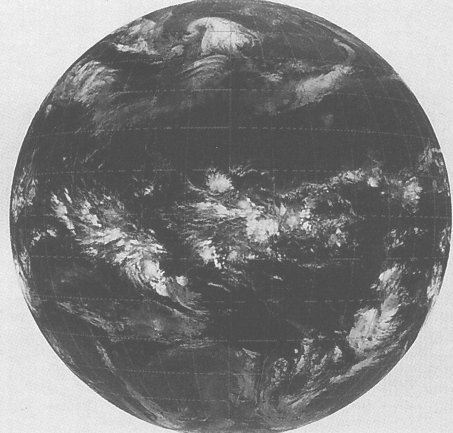
GMS-4 IR 0231 95 APR 04 03Z



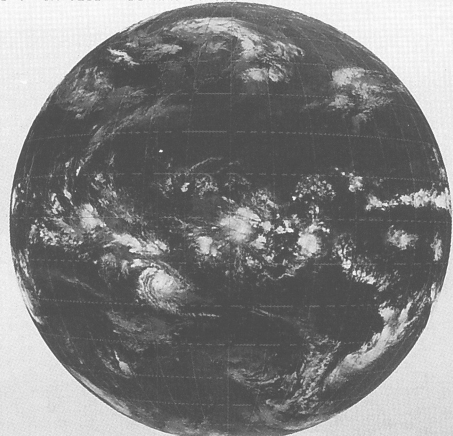
GMS-4 IR 0231 95 APR 05 03Z



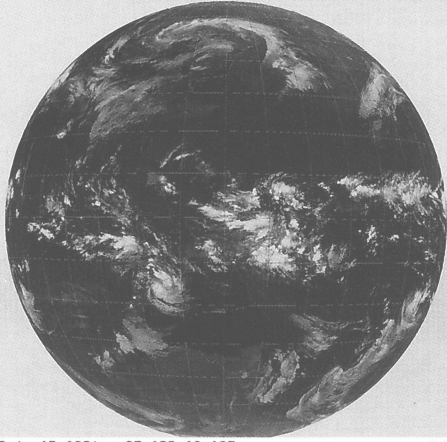
GMS-4 IR 0231 95 APR 06 03Z



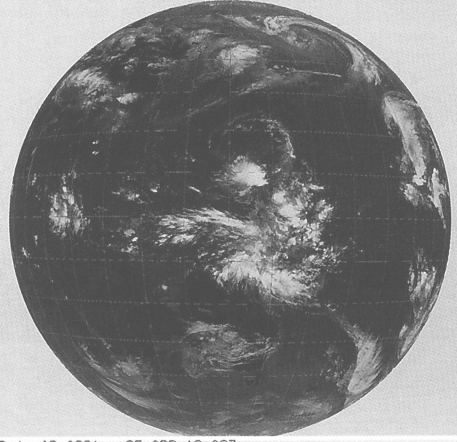
GMS-4 IR 0231 95 APR 07 03Z



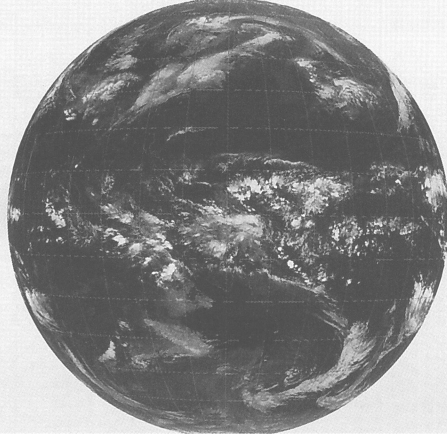
GMS-4 IR 0231 95 APR 08 03Z



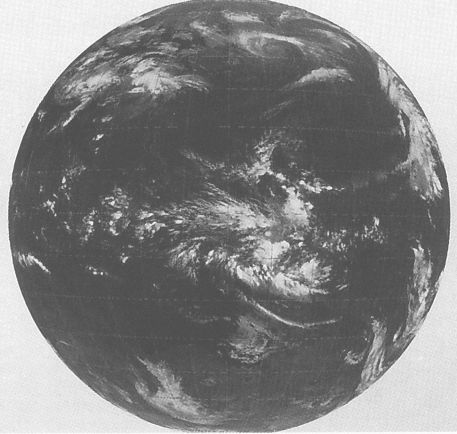
GMS-4 IR 0231 95 APR 12 03Z



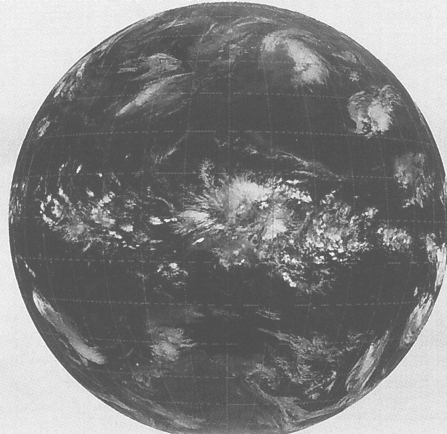
GMS-4 IR 0231 95 APR 09 03Z



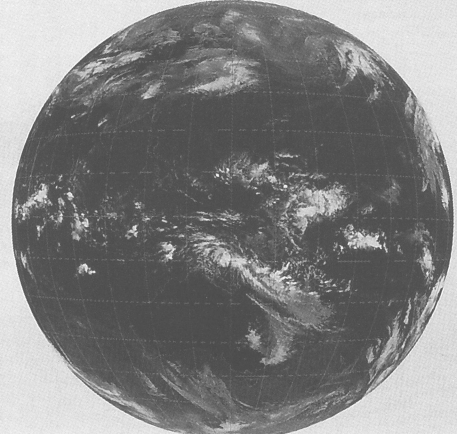
GMS-4 IR 0231 95 APR 13 03Z



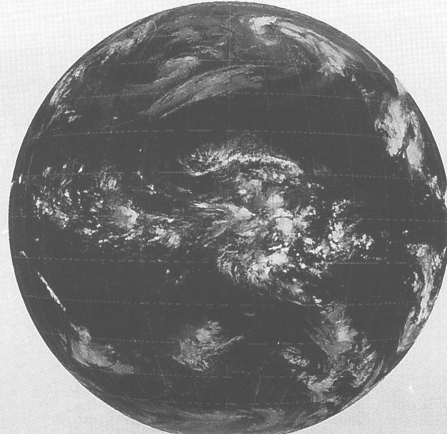
GMS-4 IR 0231 95 APR 10 03Z



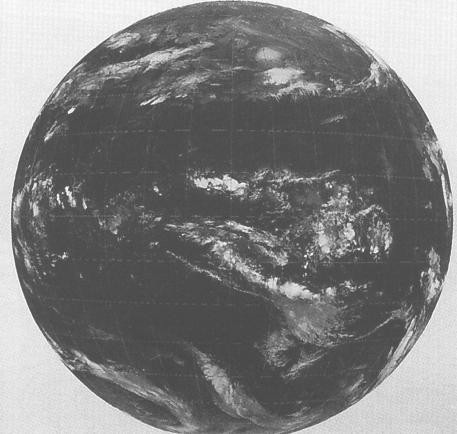
GMS-4 IR 0231 95 APR 14 03Z



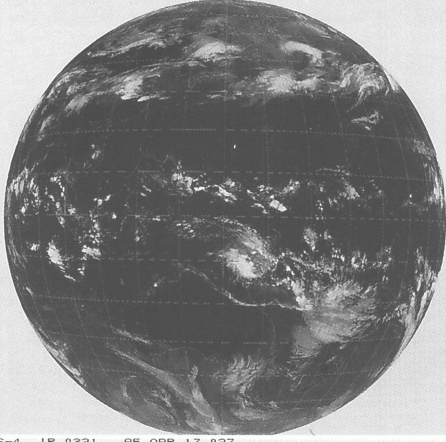
GMS-4 IR 0231 95 APR 11 03Z



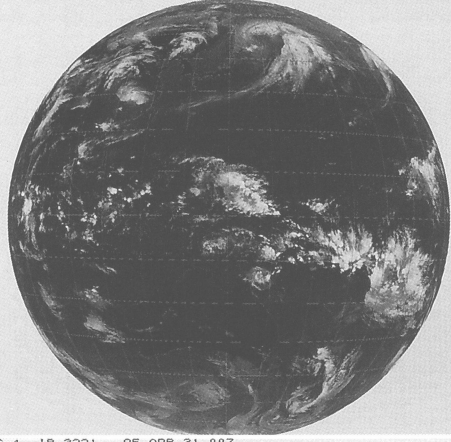
GMS-4 IR 0231 95 APR 15 03Z



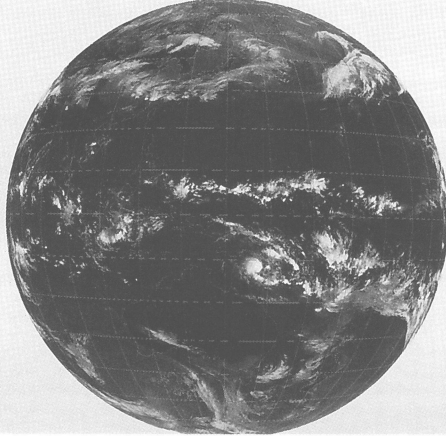
GMS-4 IR 0231 95 APR 16 03Z



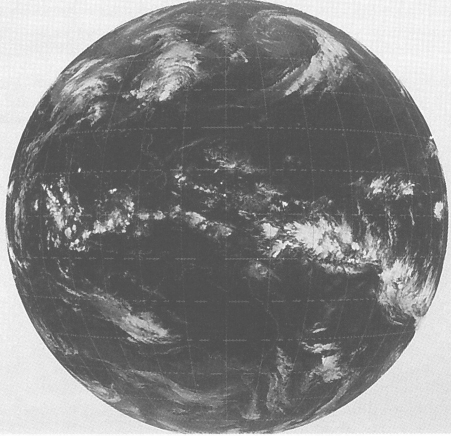
GMS-4 IR 0231 95 APR 20 03Z



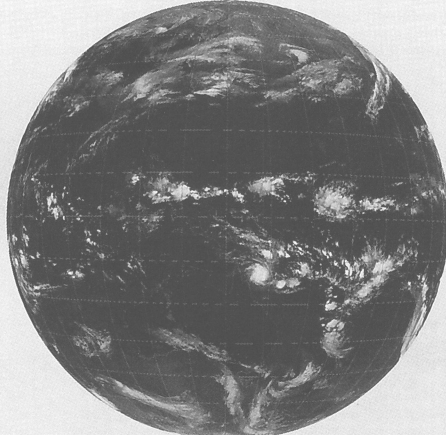
GMS-4 IR 0231 95 APR 17 03Z



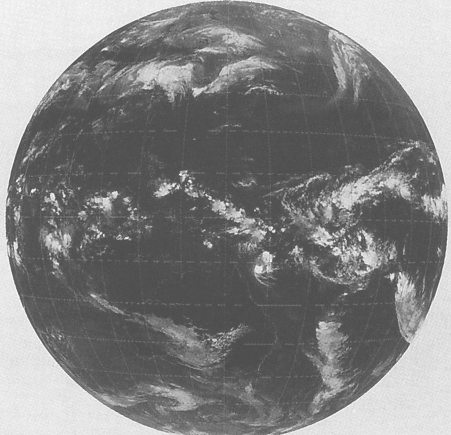
GMS-4 IR 2331 95 APR 21 00Z



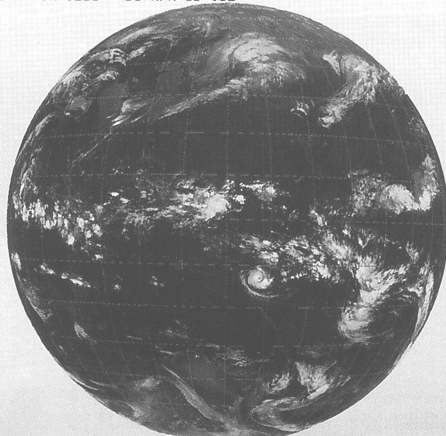
GMS-4 IR 0231 95 APR 18 03Z



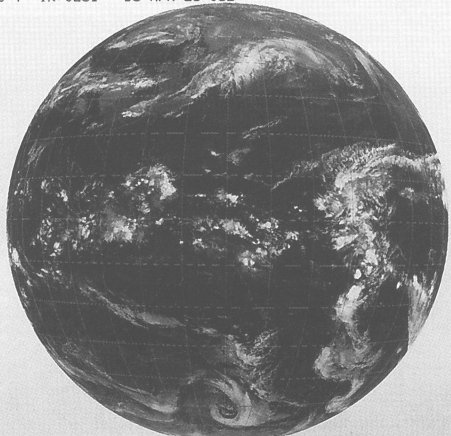
GMS-4 IR 0231 95 APR 22 03Z



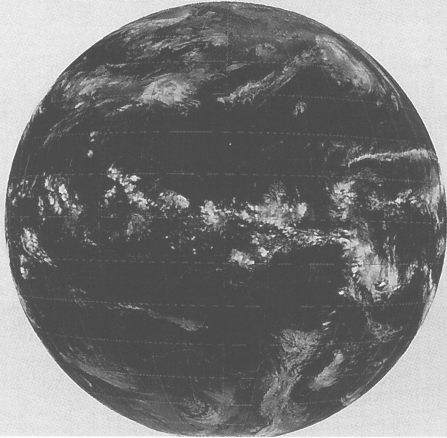
GMS-4 IR 0231 95 APR 19 03Z



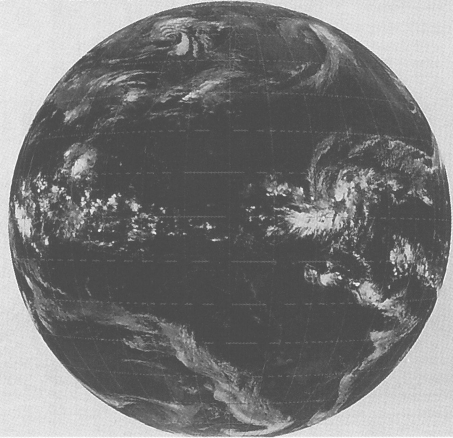
GMS-4 IR 0231 95 APR 23 03Z



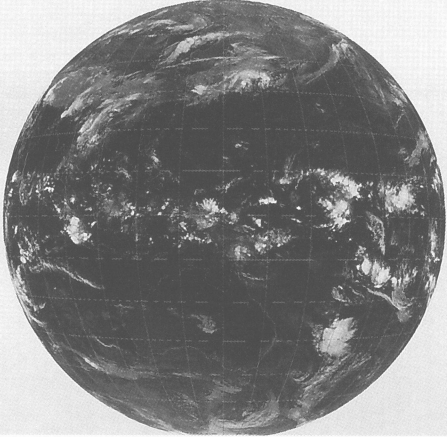
GMS-4 IR 0231 95 APR 24 03Z



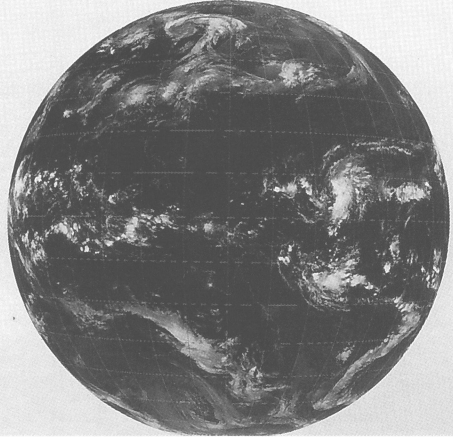
GMS-4 IR 2331 95 APR 28 00Z



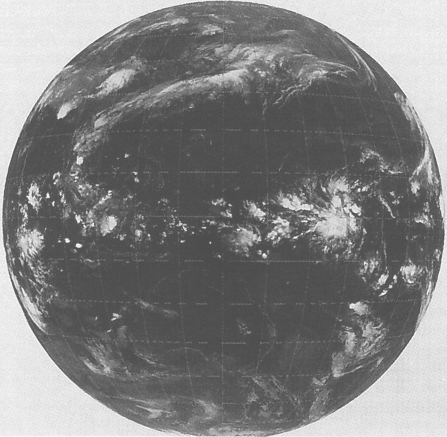
GMS-4 IR 2331 95 APR 25 00Z



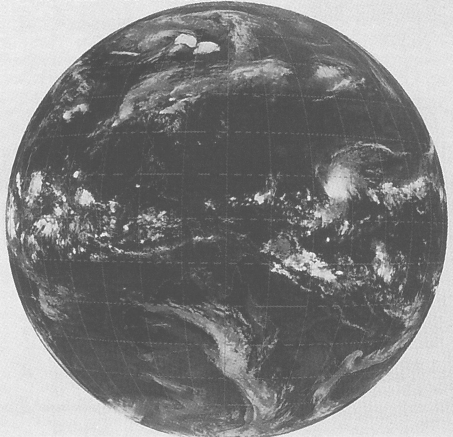
GMS-4 IR 0231 95 APR 29 03Z



GMS-4 IR 2331 95 APR 26 00Z



GMS-4 IR 0231 95 APR 30 03Z



GMS-4 IR 2331 95 APR 27 00Z

