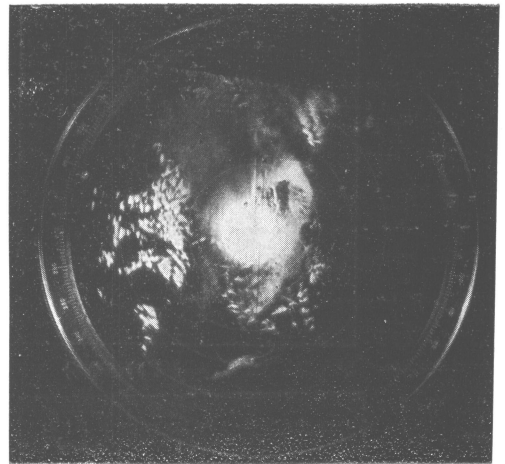
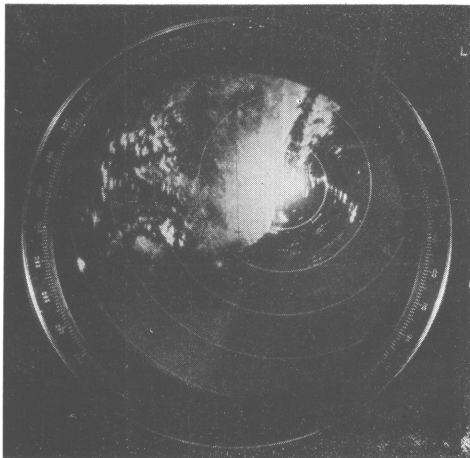


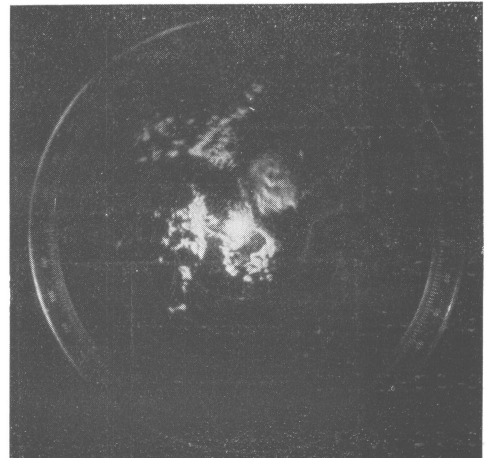
No. 1 13時20分



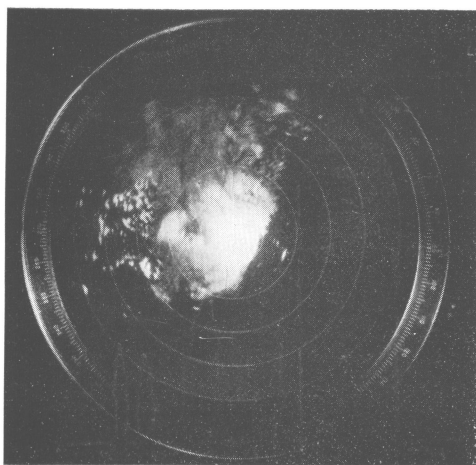
No. 4 14時58分



No. 2 14時10分

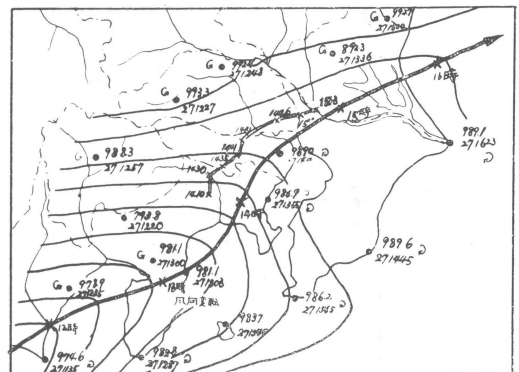


No. 5 16時00分

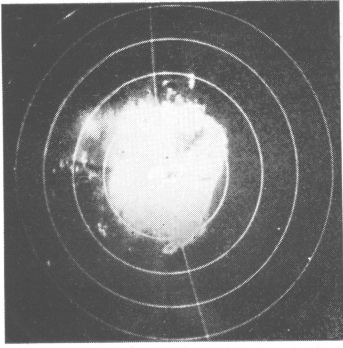


No. 3 14時41分

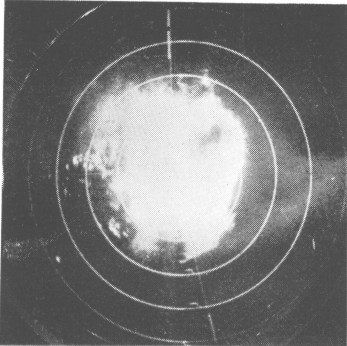
第3図 台風15号の拡大経路図(関東甲信地方)



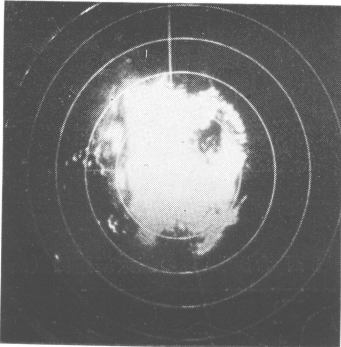
- (1) 图中細い実線は等最低気圧線(2mb毎) 太い実線は台風経路, 2重線はレーダー・エコーの中心の経路
- (2) 実況例・9900(最低気圧)2713000(同上起時)



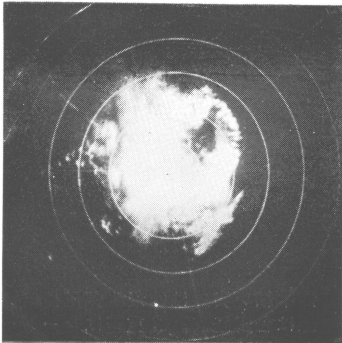
No. 1 14時43分



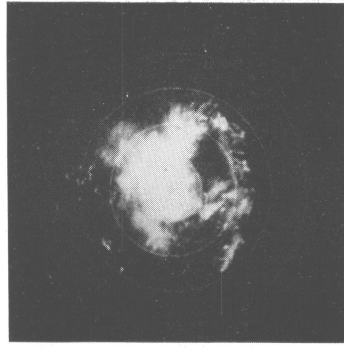
No. 2 14時48分



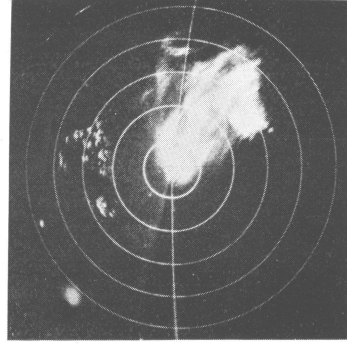
No. 3 14時51分



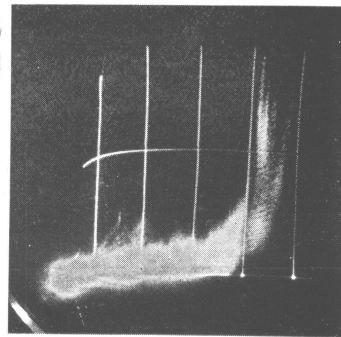
No. 4 14時53分



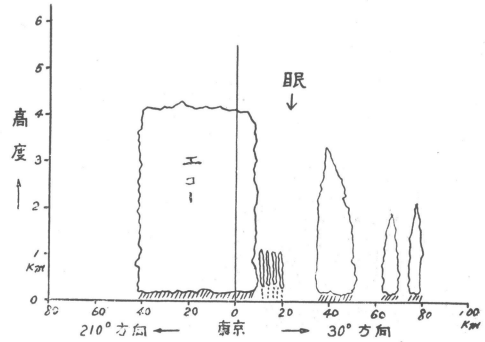
No. 5 15時00分



No. 6 15時40分



No. 7 15時22分



第5図 垂直断面図 15時00分