

# 日々の衛星画像

## 1986年 4 月

(赤外画像)

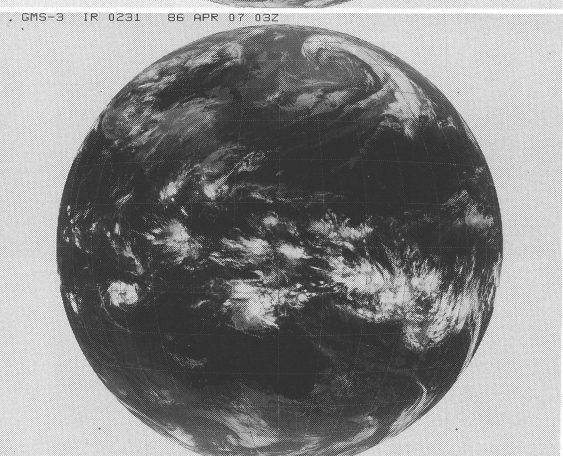
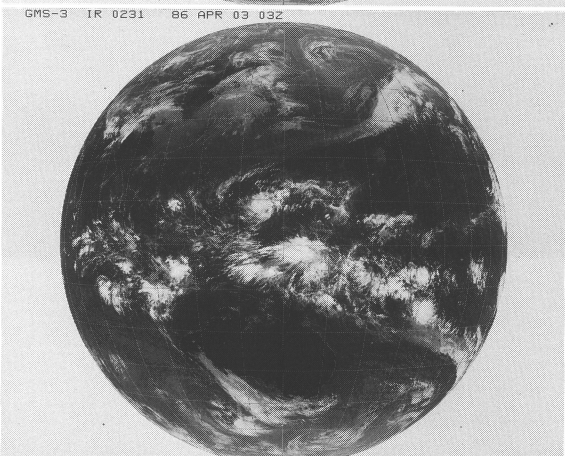
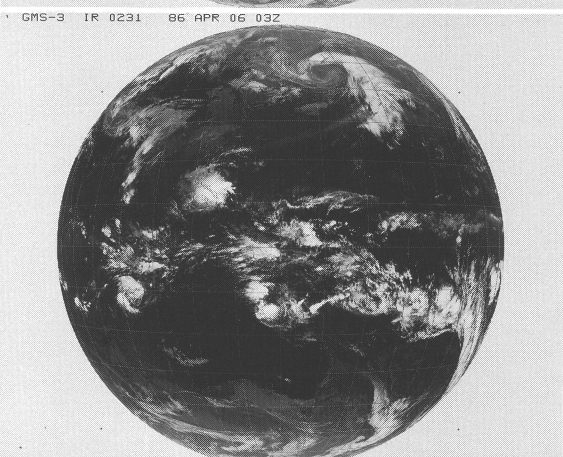
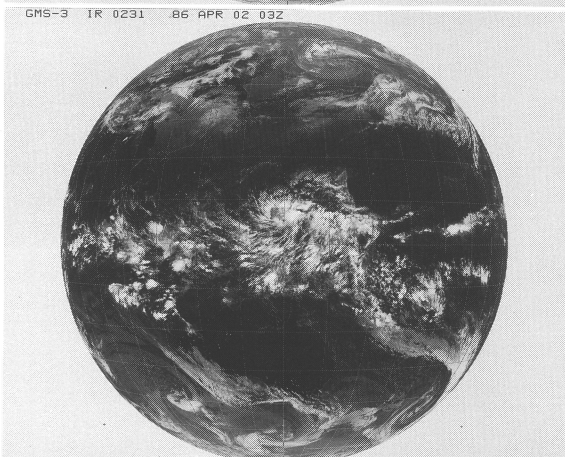
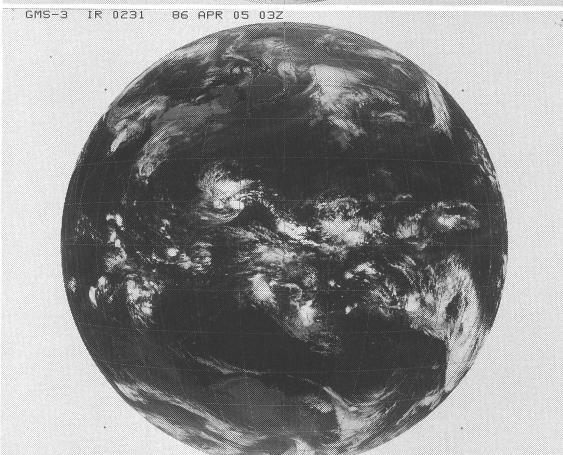
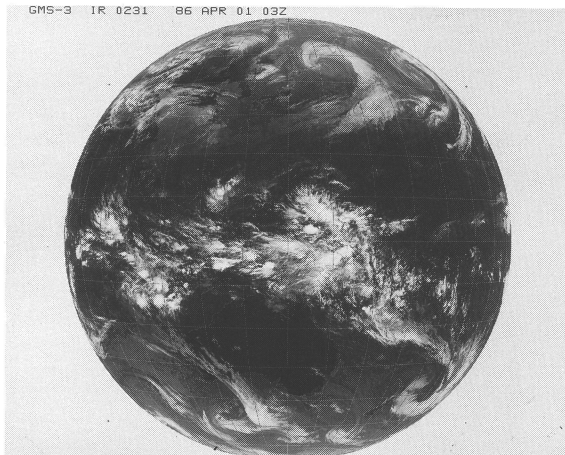
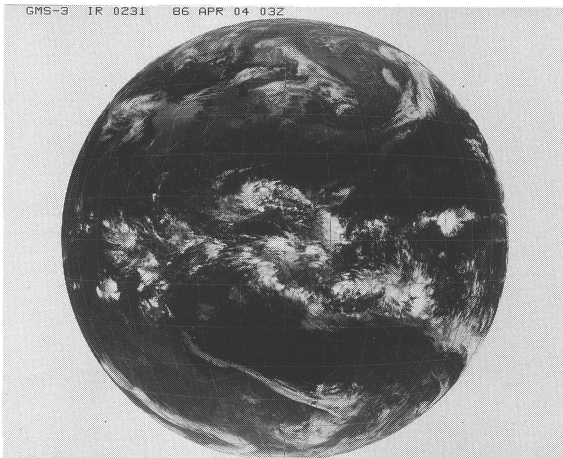
ひまわり 3号

(表示例)

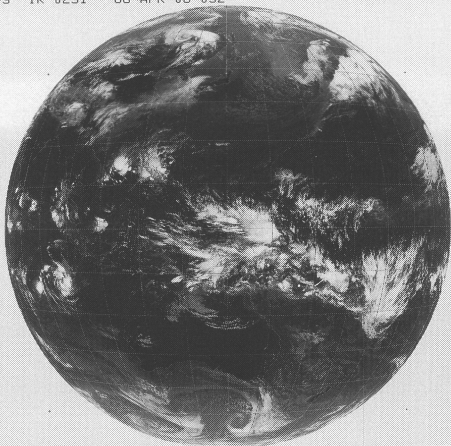
(気象庁提供)

ひまわり	赤外	撮像開始時分	年	月	日	時刻
GMS-3	IR	0231	85	OCT	01	03Z

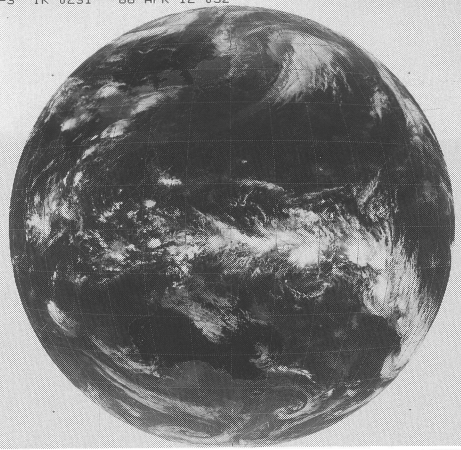
時刻は国際標準時で、9時間を加えると日本時間です。



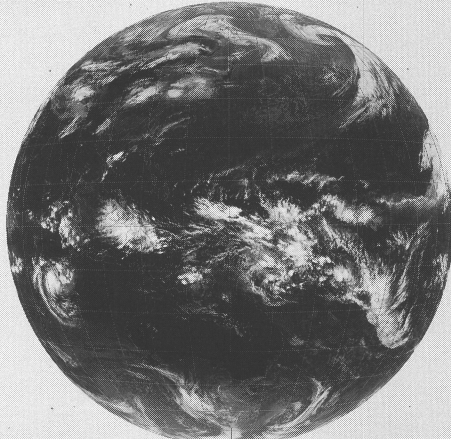
GMS-3 IR 0231 86 APR 08 03Z



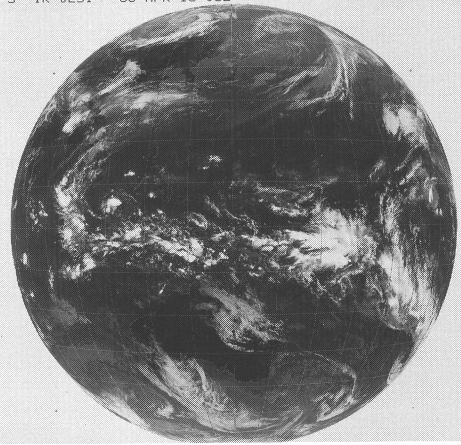
GMS-3 IR 0231 86 APR 12 03Z



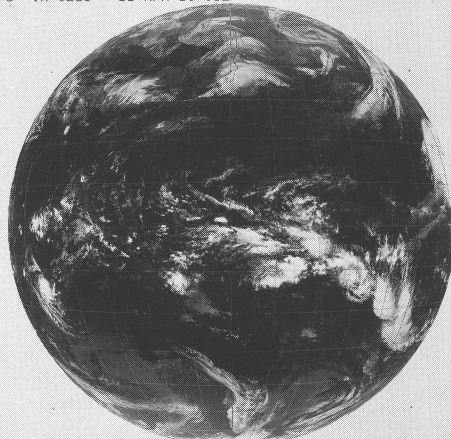
GMS-3 IR 0231 86 APR 09 03Z



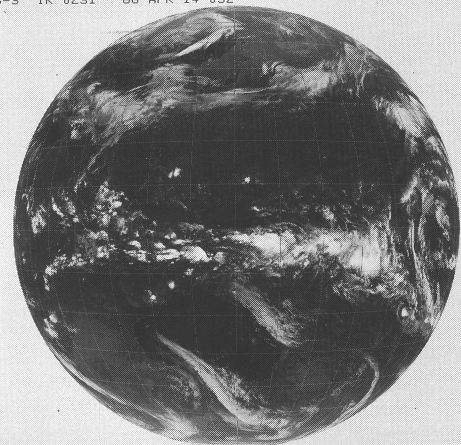
GMS-3 IR 0231 86 APR 13 03Z



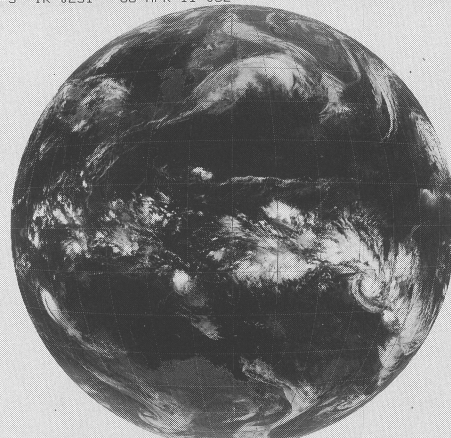
GMS-3 IR 0231 86 APR 10 03Z



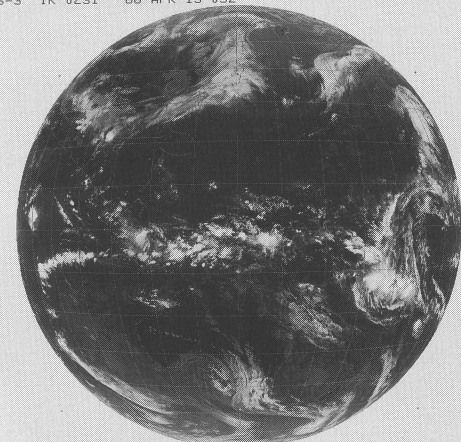
GMS-3 IR 0231 86 APR 14 03Z



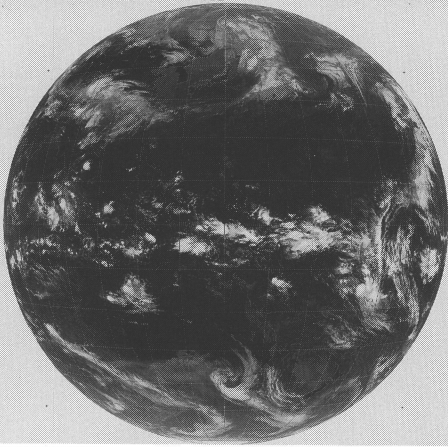
GMS-3 IR 0231 86 APR 11 03Z



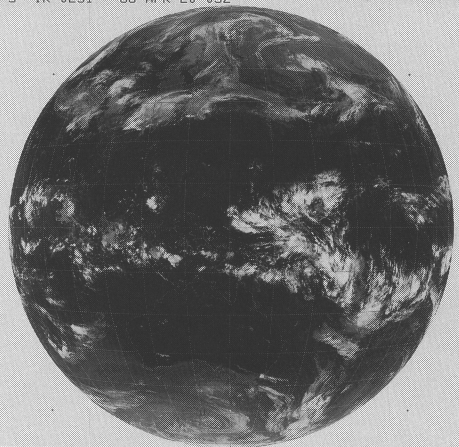
GMS-3 IR 0231 86 APR 15 03Z



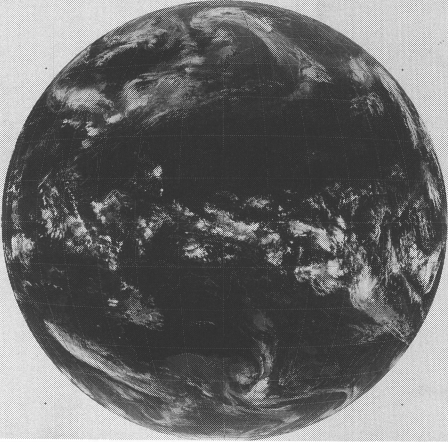
GMS-3 IR 0231 86 APR 16 03Z



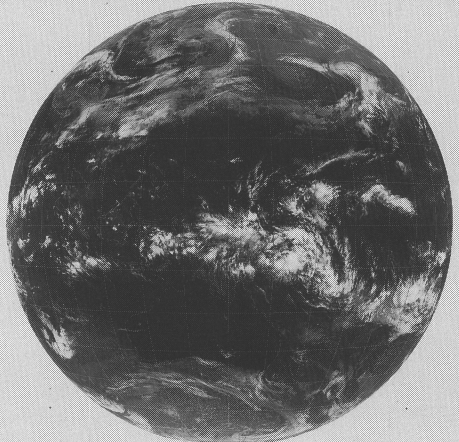
GMS-3 IR 0231 86 APR 20 03Z



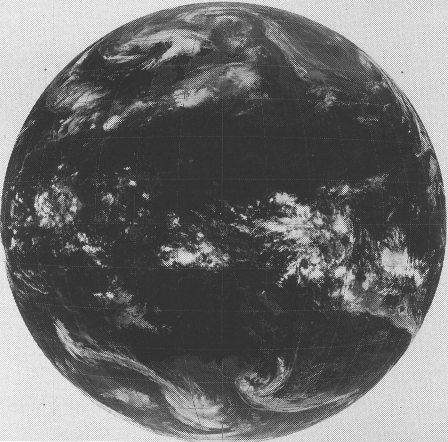
GMS-3 IR 0231 86 APR 17 03Z



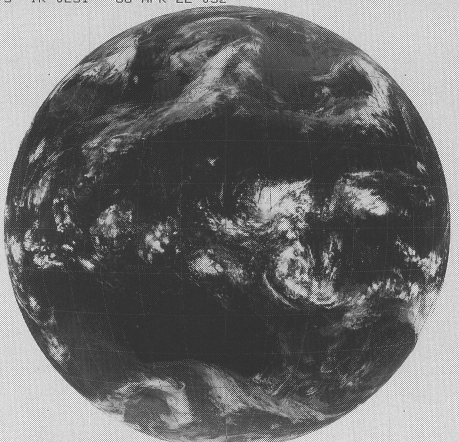
GMS-3 IR 0231 86 APR 21 03Z



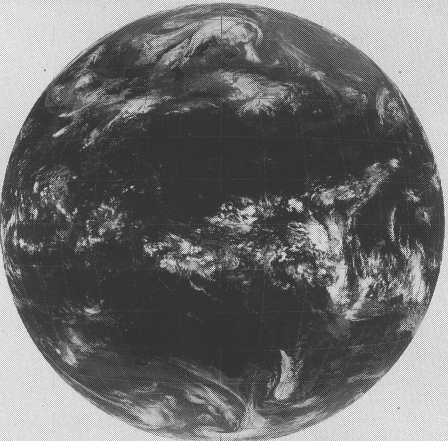
GMS-3 IR 0231 86 APR 18 03Z



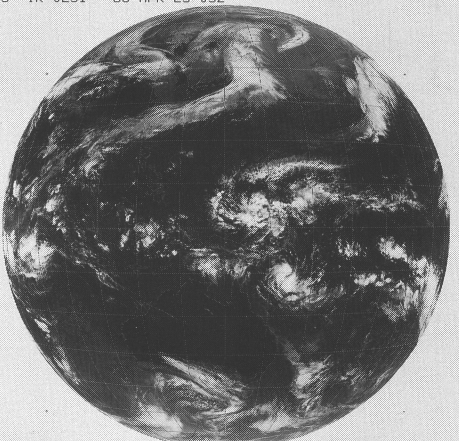
GMS-3 IR 0231 86 APR 22 03Z



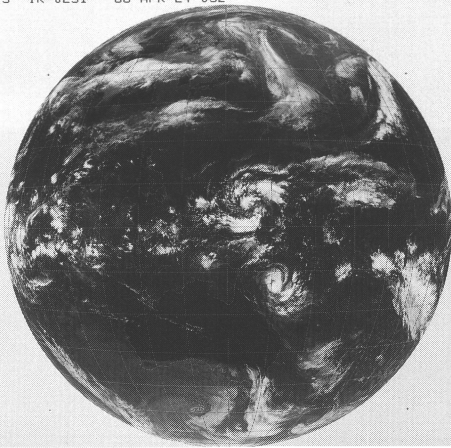
GMS-3 IR 0231 86 APR 19 03Z



GMS-3 IR 0231 86 APR 23 03Z



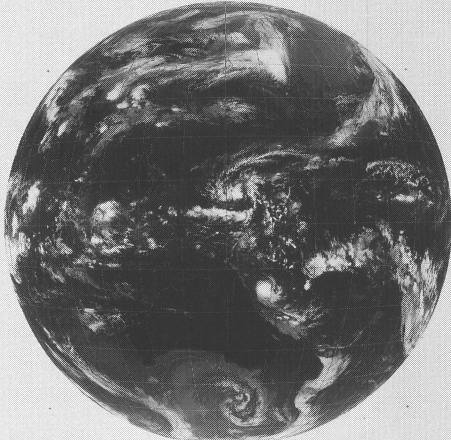
GMS-3 IR 0231 86 APR 24 03Z



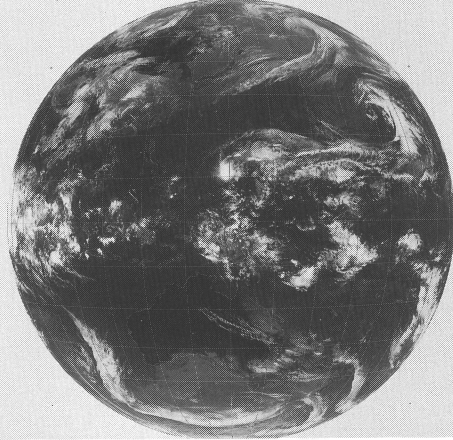
GMS-3 IR 0231 86 APR 28 03Z



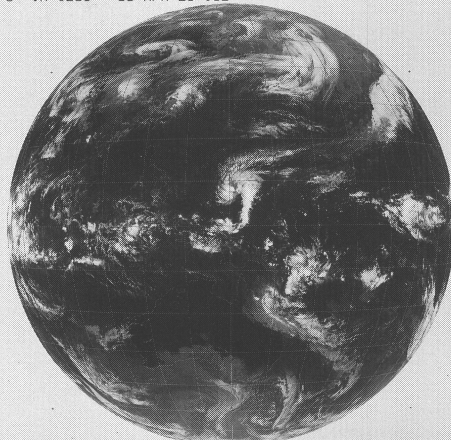
GMS-3 IR 0231 86 APR 25 03Z



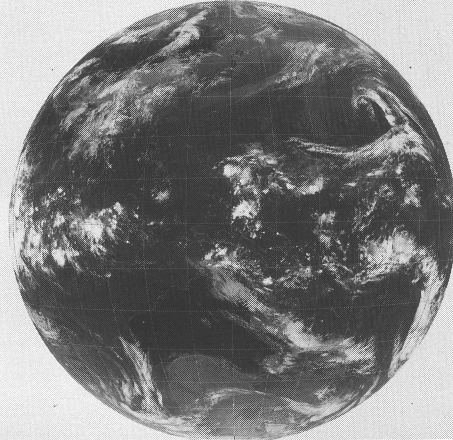
GMS-3 IR 0231 86 APR 29 03Z



GMS-3 IR 0231 86 APR 26 03Z



GMS-3 IR 0231 86 APR 30 03Z



GMS-3 IR 0231 86 APR 27 03Z

