

日々の衛星画像

1986年11月

(赤外画像)

ひまわり3号

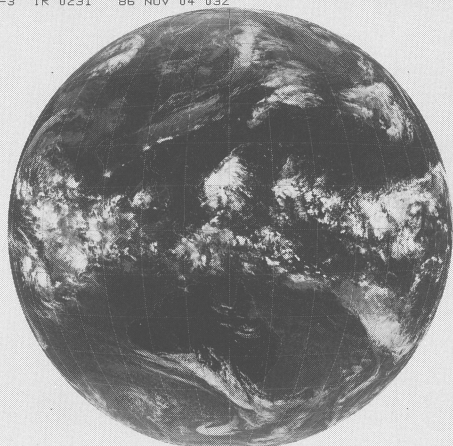
(表示例)

(気象庁提供)

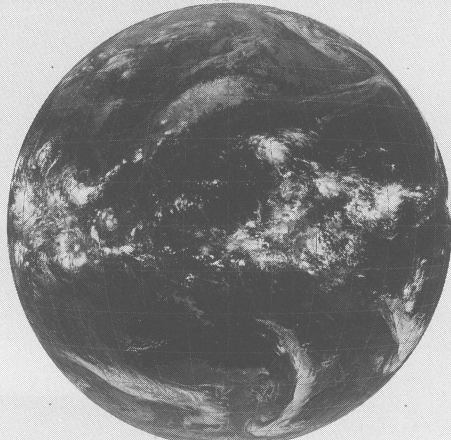
ひまわり	赤外	撮像開始時分	年	月	日	時刻
GMS-3	IR	0231	85	OCT	01	03Z

時刻は国際標準時で、9時間を加えると日本時間です。

GMS-3 IR 0231 86 NOV 04 03Z



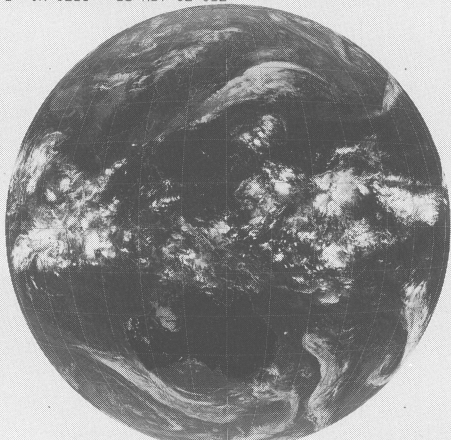
GMS-3 IR 0231 86 NOV 01 03Z



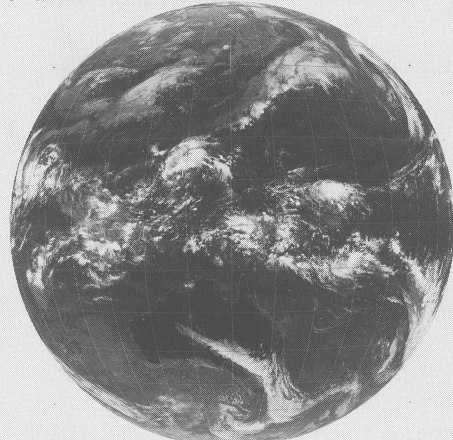
GMS-3 IR 0231 86 NOV 05 03Z



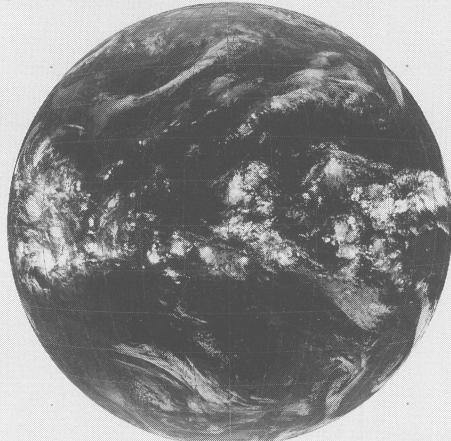
GMS-3 IR 0231 86 NOV 02 03Z



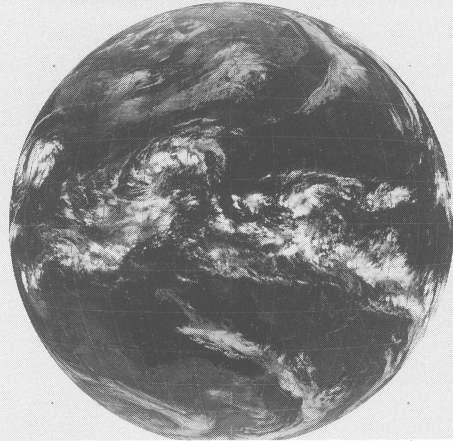
GMS-3 IR 0231 86 NOV 06 03Z



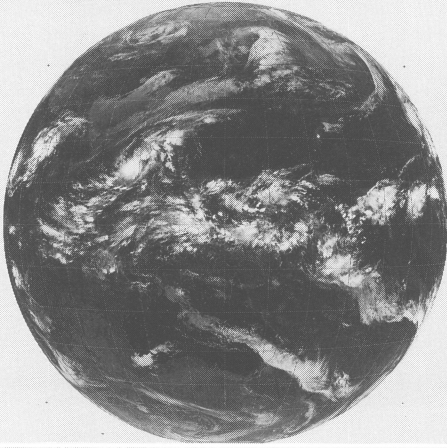
GMS-3 IR 0231 86 NOV 03 03Z



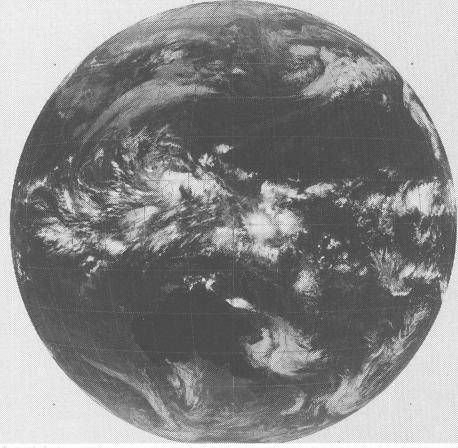
GMS-3 IR 0231 86 NOV 07 03Z



GMS-3 1R 0231 86 NOV 08 03Z



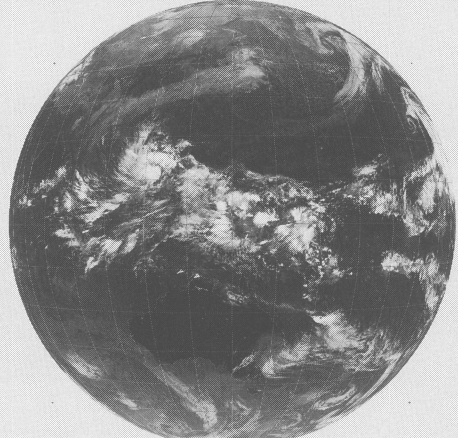
GMS-3 1R 0231 86 NOV 12 03Z



GMS-3 1R 0231 86 NOV 09 03Z



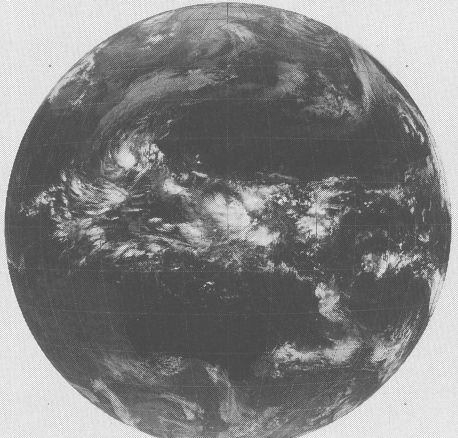
GMS-3 1R 0231 86 NOV 13 03Z



GMS-3 1R 0231 86 NOV 10 03Z



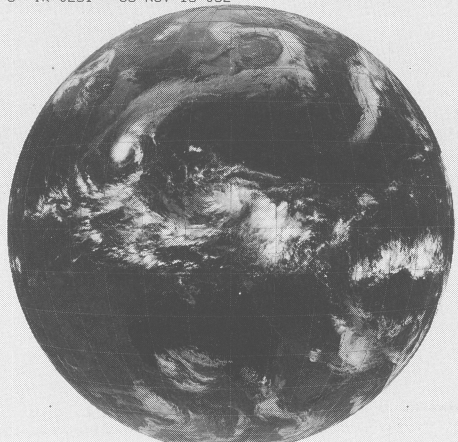
GMS-3 1R 0231 86 NOV 14 03Z



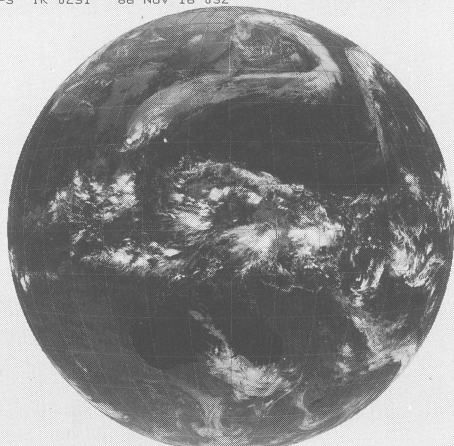
GMS-3 1R 0231 86 NOV 11 03Z



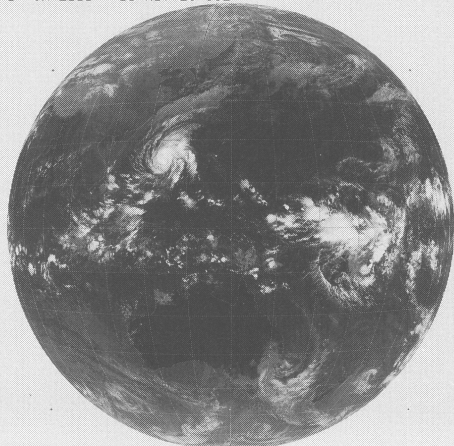
GMS-3 1R 0231 86 NOV 15 03Z



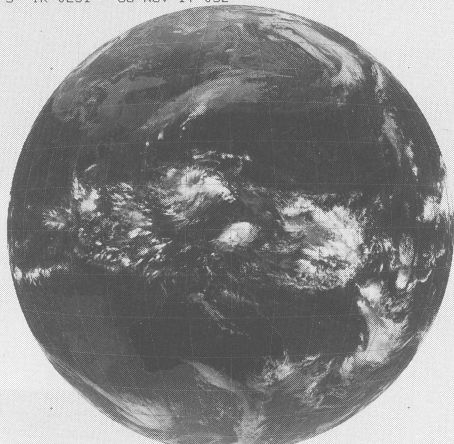
GMS-3 1R 0231 86 NOV 16 03Z



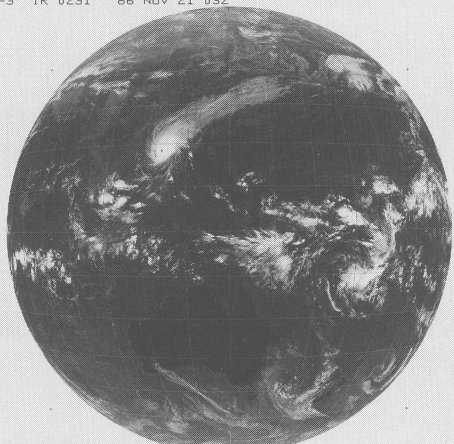
GMS-3 1R 2331 86 NOV 20 00Z



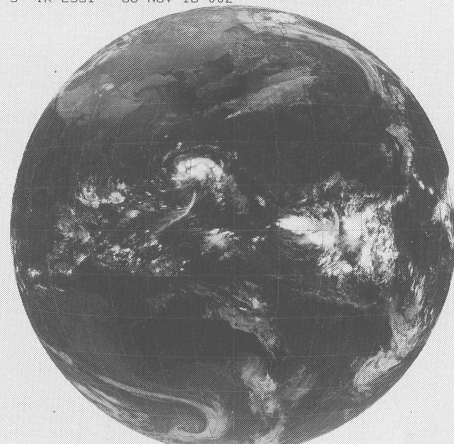
GMS-3 1R 0231 86 NOV 17 03Z



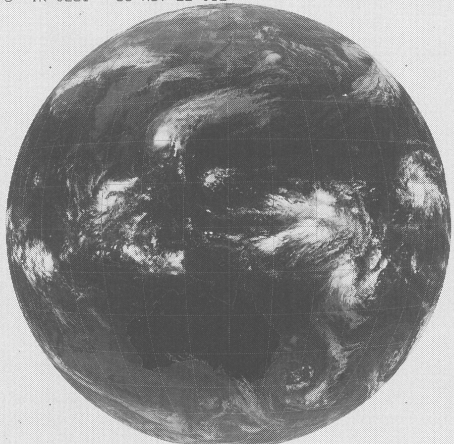
GMS-3 1R 0231 86 NOV 21 03Z



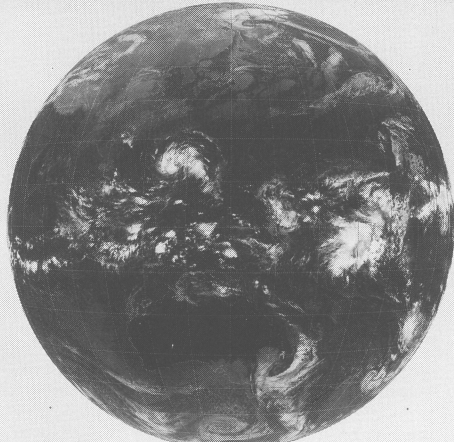
GMS-3 1R 2331 86 NOV 18 00Z



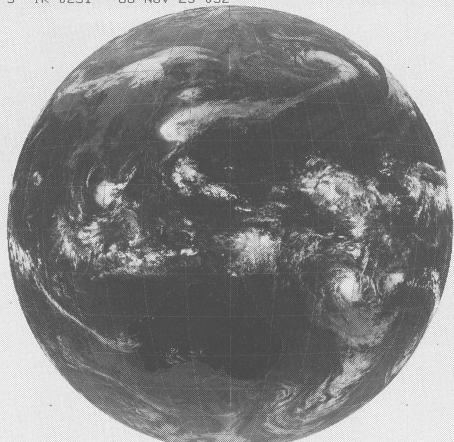
GMS-3 1R 0231 86 NOV 22 03Z



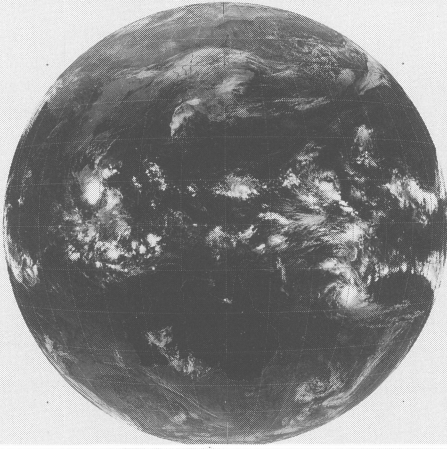
GMS-3 1R 2331 86 NOV 19 00Z



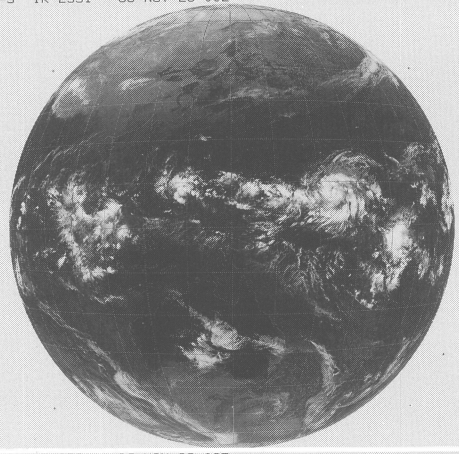
GMS-3 1R 0231 86 NOV 23 03Z



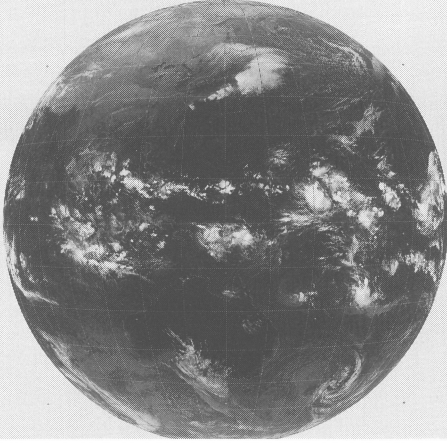
GMS-3 1R 0231 86 NOV 24 03Z



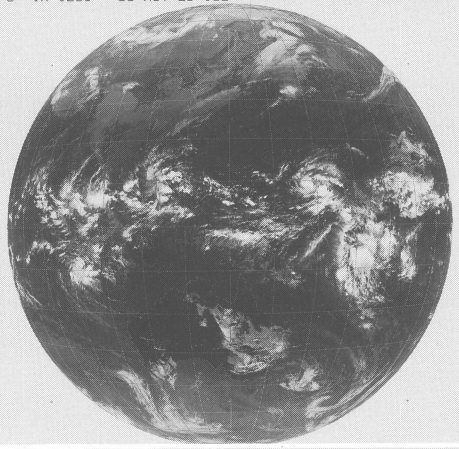
GMS-3 1R 2331 86 NOV 28 00Z



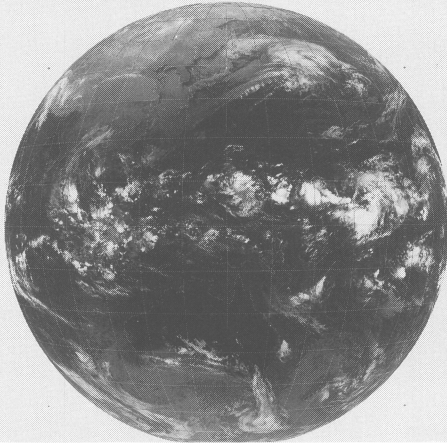
GMS-3 1R 2331 86 NOV 25 00Z



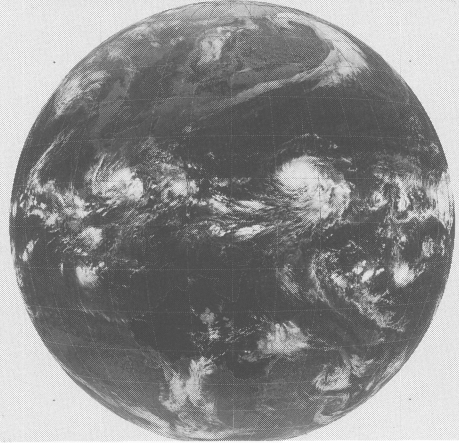
GMS-3 1R 0231 86 NOV 29 03Z



GMS-3 1R 2331 86 NOV 26 00Z



GMS-3 1R 0231 86 NOV 30 03Z



GMS-3 1R 0231 86 NOV 27 03Z

