

# 日々の衛星画像

## 1988年 6月

(赤外画像)

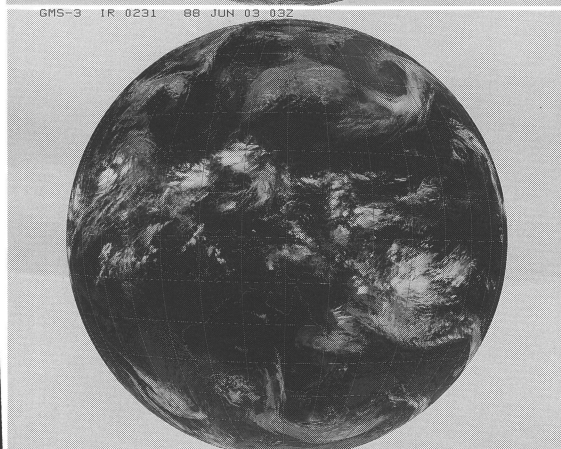
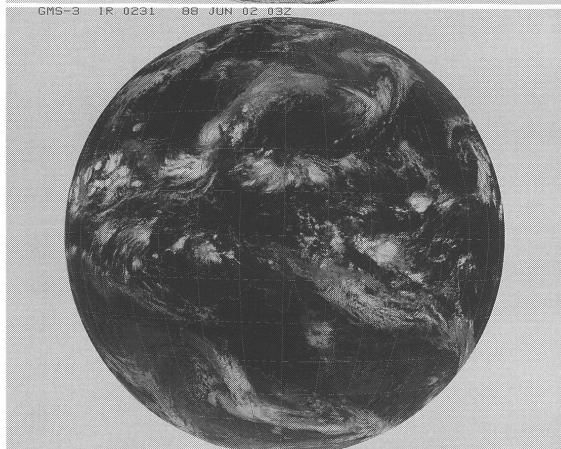
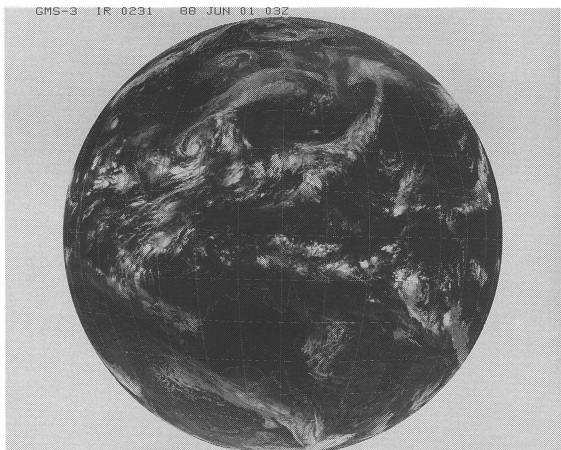
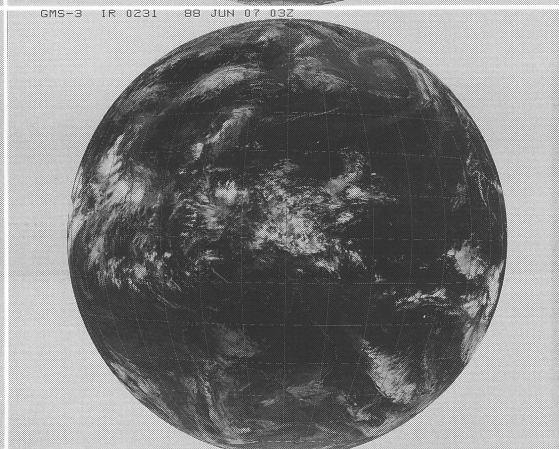
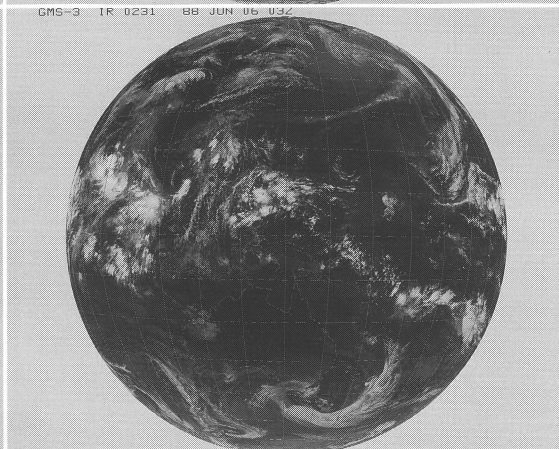
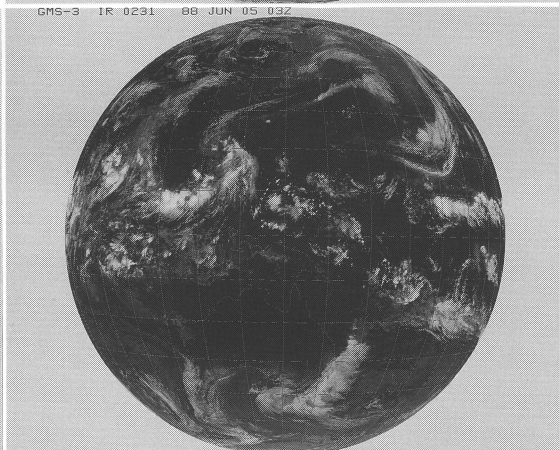
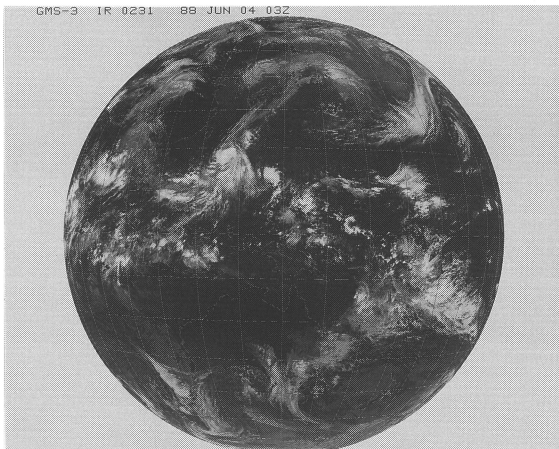
ひまわり3号

(表示例)

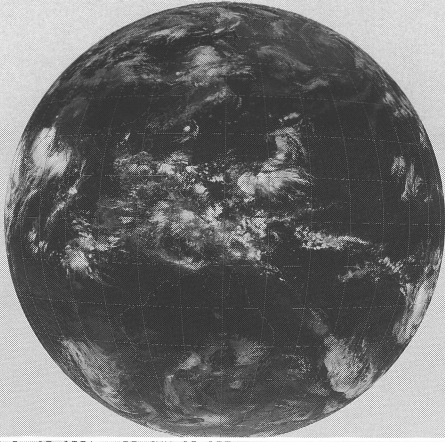
(気象庁提供)

ひまわり	赤外	撮像開始時分	年	月	日	時刻
GMS-3	IR	0231	85	OCT	01	03Z

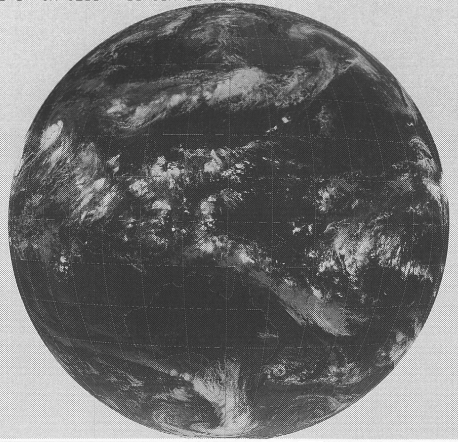
時刻は国際標準時で、9時間を加えると日本時間です。



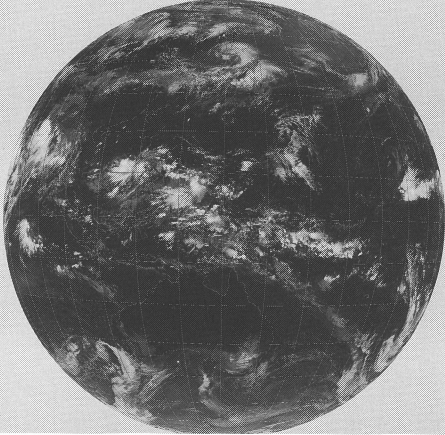
GMS-3 IR 0231 88 JUN 08 03Z



GMS-3 IR 0231 88 JUN 12 03Z



GMS-3 IR 0231 88 JUN 09 03Z



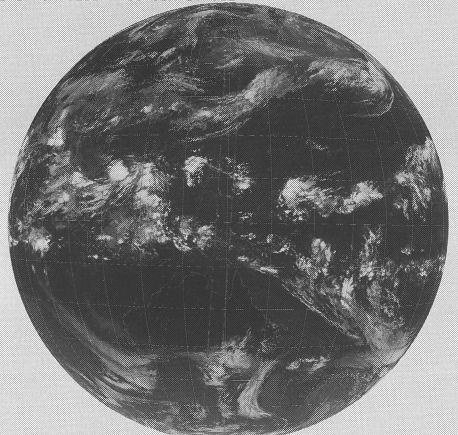
GMS-3 IR 0231 88 JUN 13 03Z



GMS-3 IR 0231 88 JUN 10 03Z



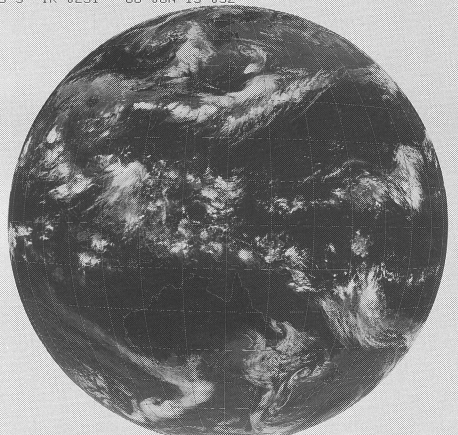
GMS-3 IR 0231 88 JUN 14 03Z



GMS-3 IR 0231 88 JUN 11 03Z

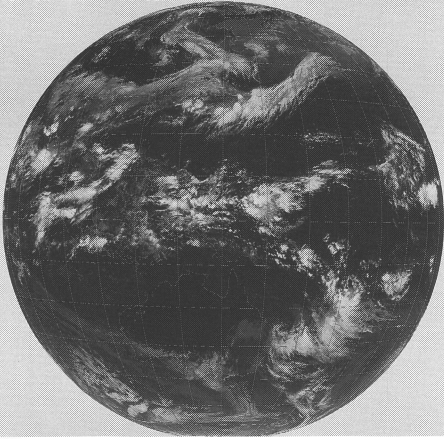


GMS-3 IR 0231 88 JUN 15 03Z

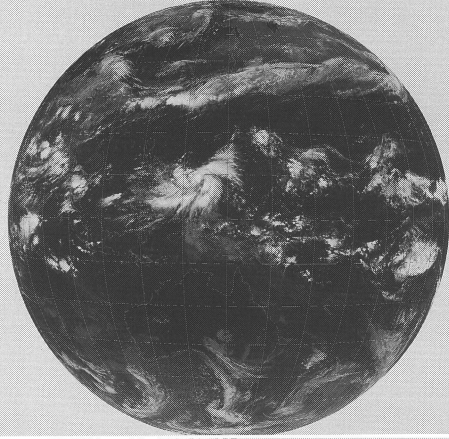




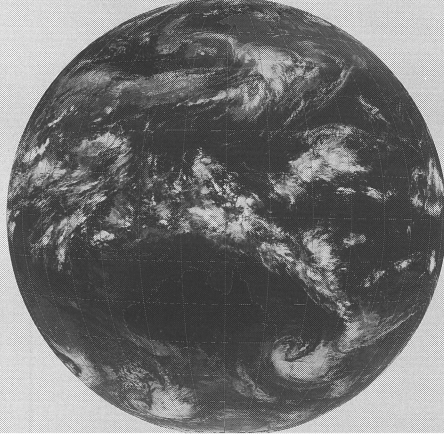
GMS-3 IR 0231 88 JUN 16 03Z



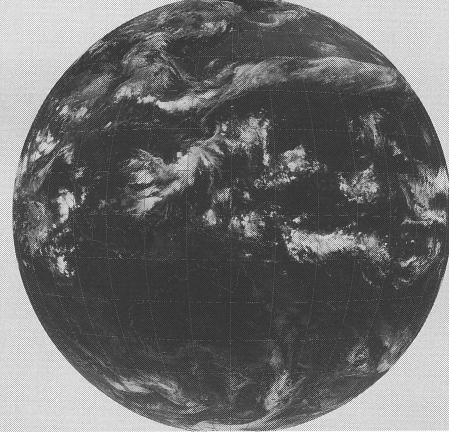
GMS-3 IR 0231 88 JUN 20 09Z



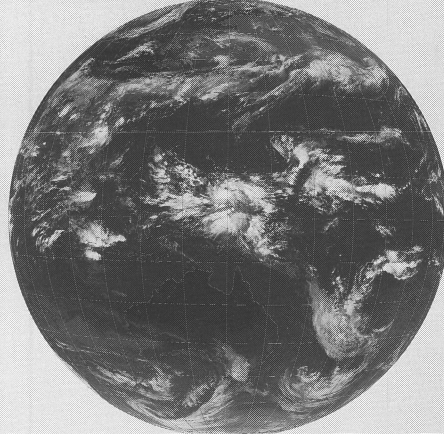
GMS-3 IR 0231 88 JUN 17 03Z



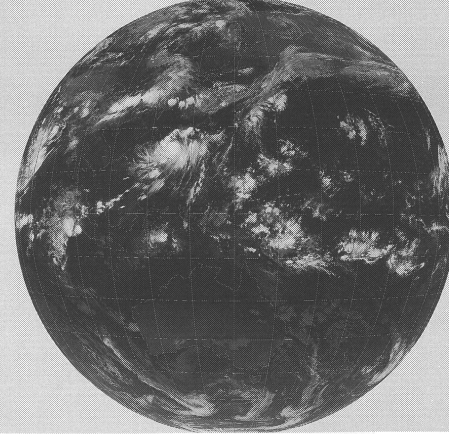
GMS-3 IR 0231 88 JUN 21 03Z



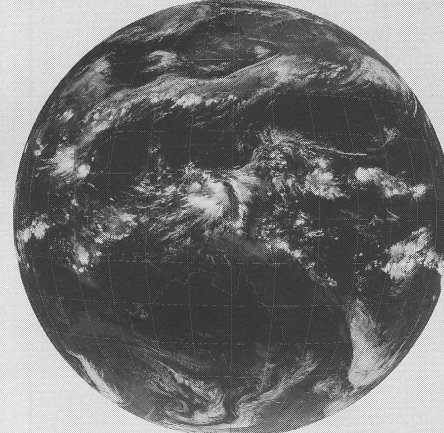
GMS-3 IR 0231 88 JUN 18 03Z



GMS-3 IR 2331 88 JUN 22 00Z



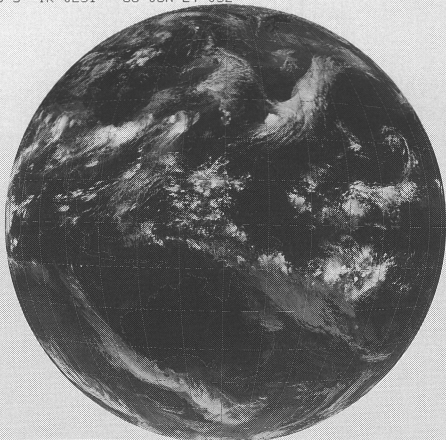
GMS-3 IR 0231 88 JUN 19 03Z



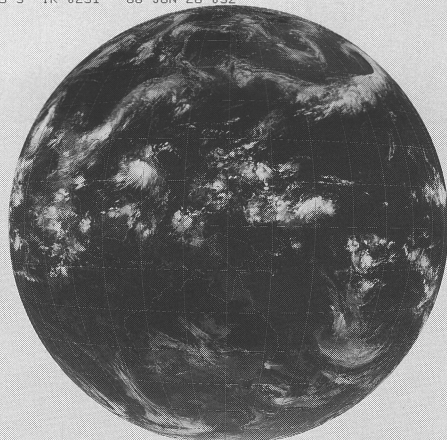
GMS-3 IR 0231 88 JUN 23 03Z



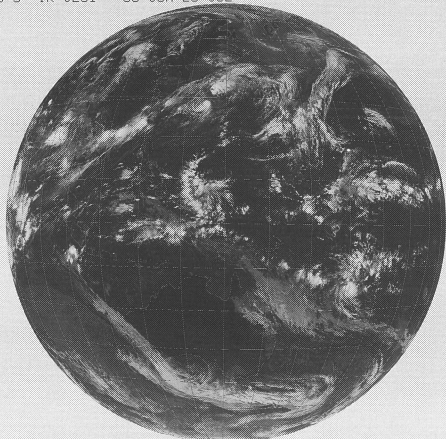
GMS-3 IR 0231 88 JUN 24 03Z



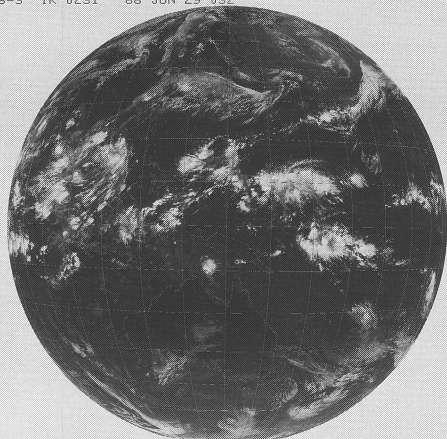
GMS-3 IR 0231 88 JUN 28 03Z



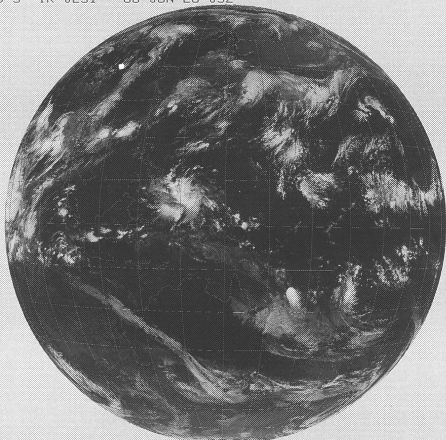
GMS-3 IR 0231 88 JUN 25 03Z



GMS-3 IR 0231 88 JUN 29 03Z



GMS-3 IR 0231 88 JUN 26 03Z



GMS-3 IR 0231 88 JUN 30 03Z



GMS-3 IR 0231 88 JUN 27 03Z

