

日々の衛星画像

1989年 8 月

(赤外画像)

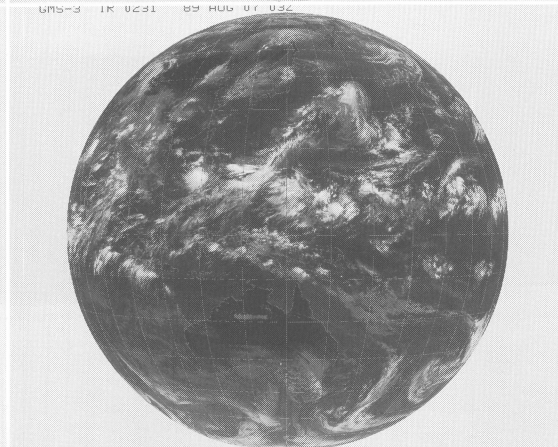
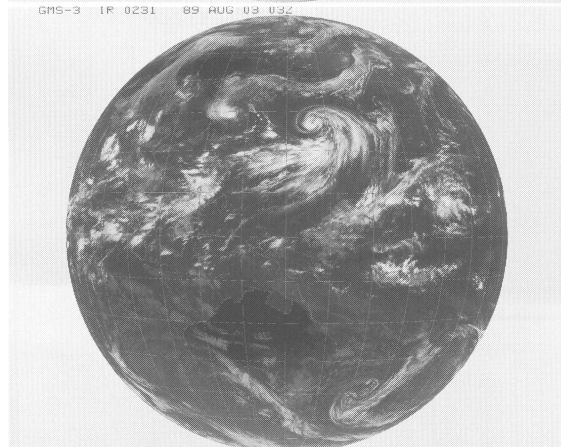
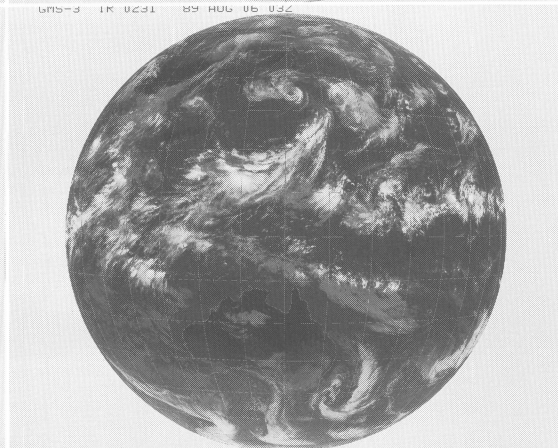
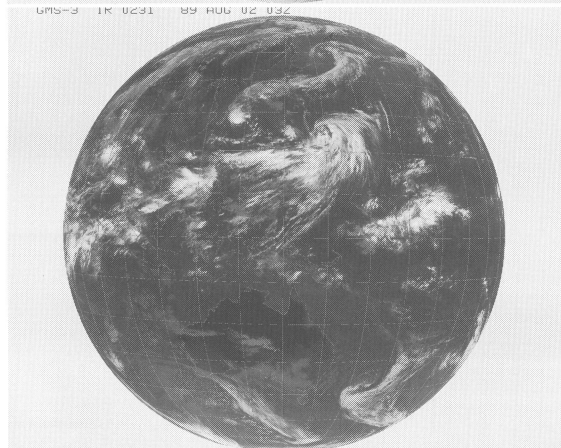
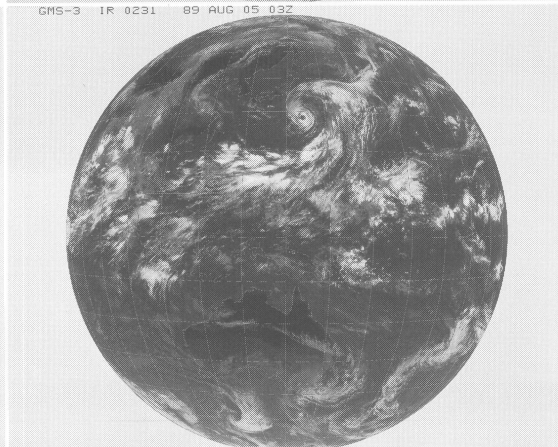
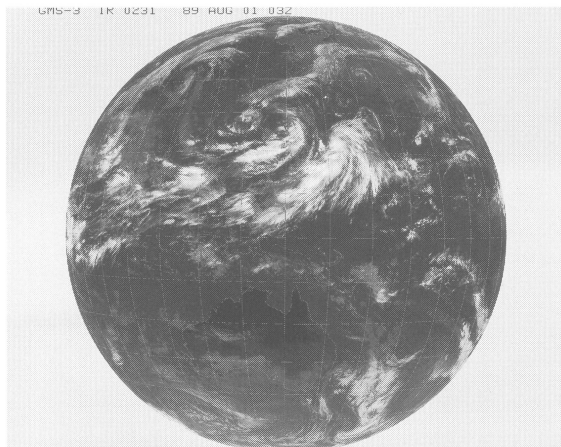
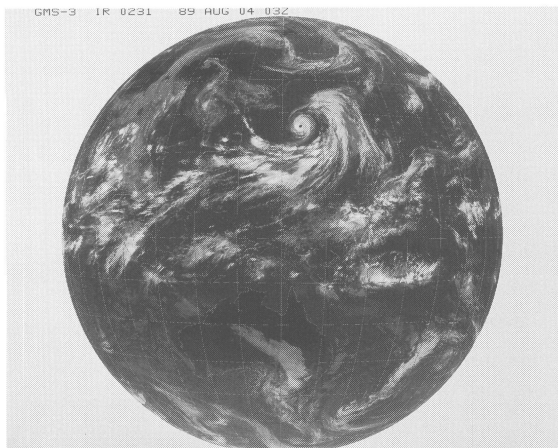
ひまわり3号

(表示例)

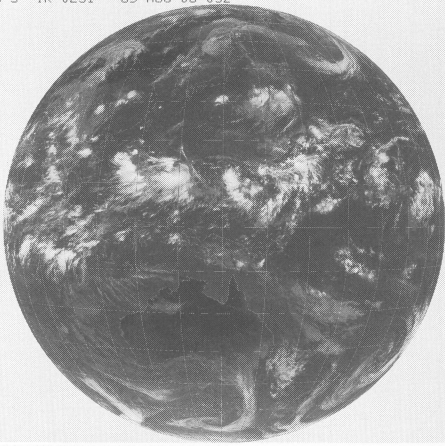
(気象庁提供)

ひまわり	赤外	撮像開始時分	年	月	日	時刻
GMS-3	IR	0231	85	OCT	01	03Z

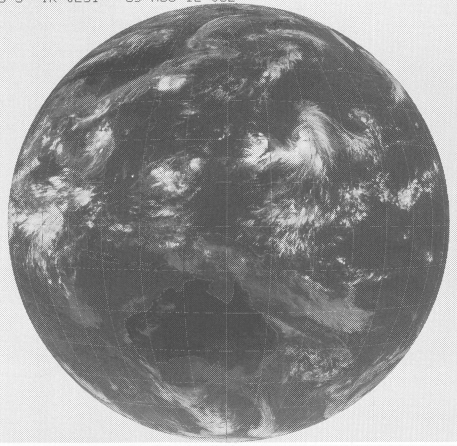
時刻は国際標準時で、9時間を加えると日本時間です。



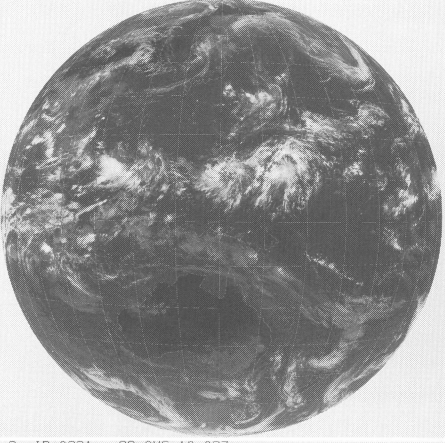
GMS-3 IR 0231 89 AUG 08 03Z



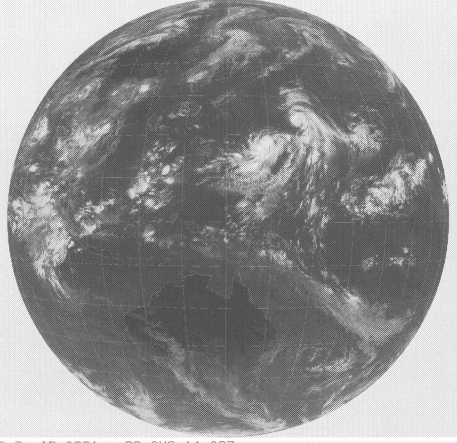
GMS-3 IR 0231 89 AUG 12 03Z



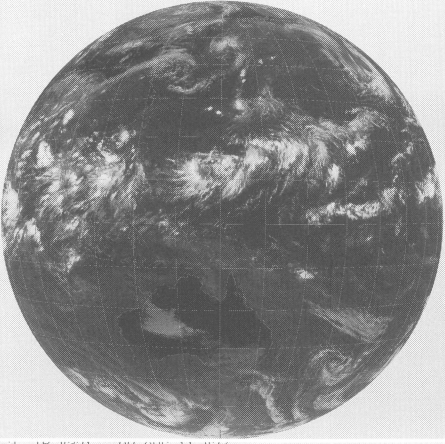
GMS-3 IR 0231 89 AUG 09 03Z



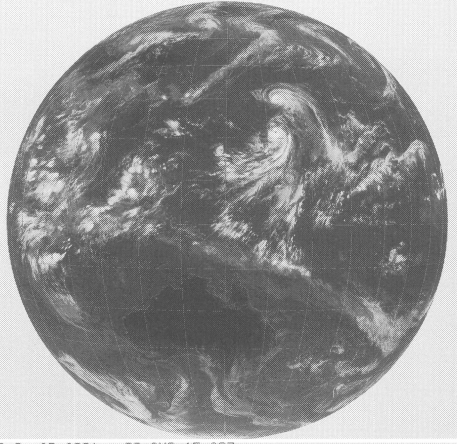
GMS-3 IR 0231 89 AUG 13 03Z



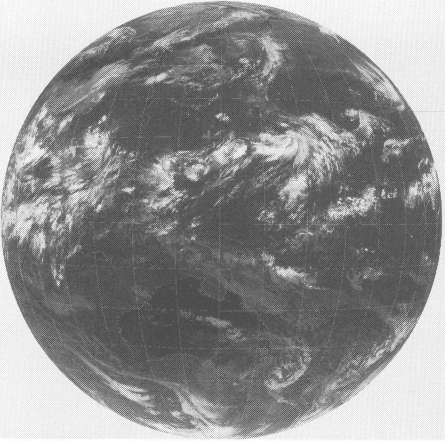
GMS-3 IR 0231 89 AUG 10 03Z



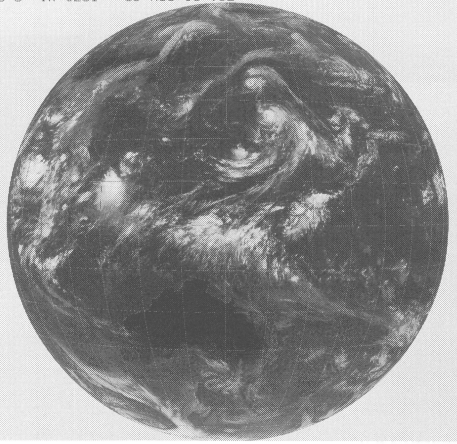
GMS-3 IR 0231 89 AUG 14 03Z



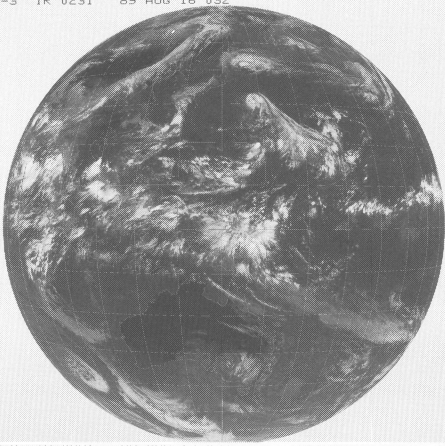
GMS-3 IR 0231 89 AUG 11 03Z



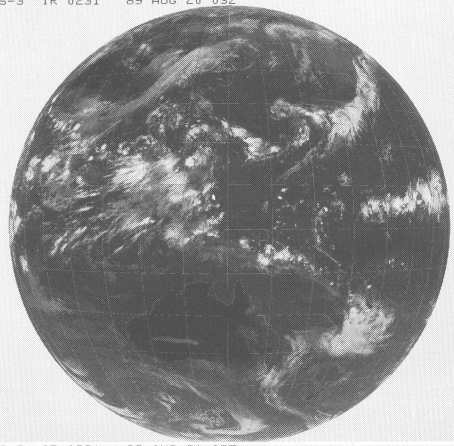
GMS-3 IR 0231 89 AUG 15 03Z



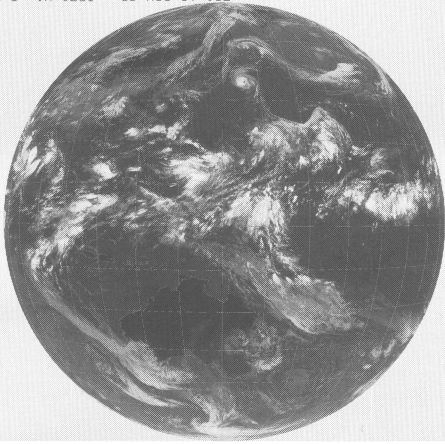
GMS-3 1R 0231 89 AUG 16 03Z



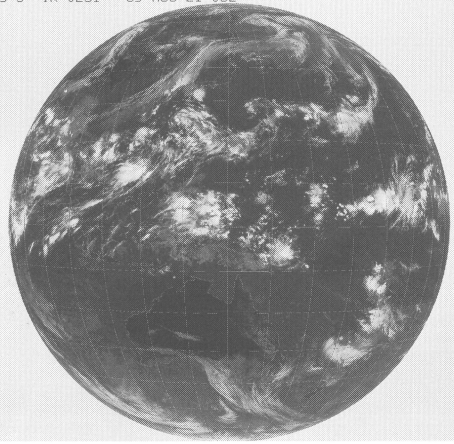
GMS-3 1R 0231 89 AUG 20 03Z



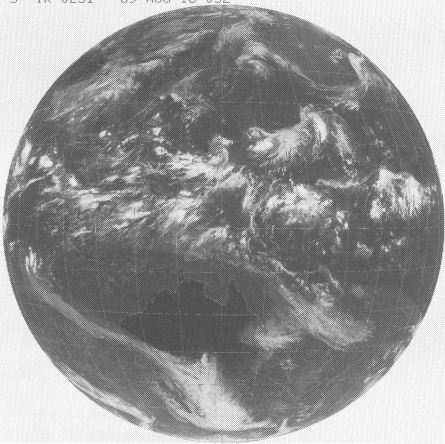
GMS-3 1R 0231 89 AUG 17 03Z



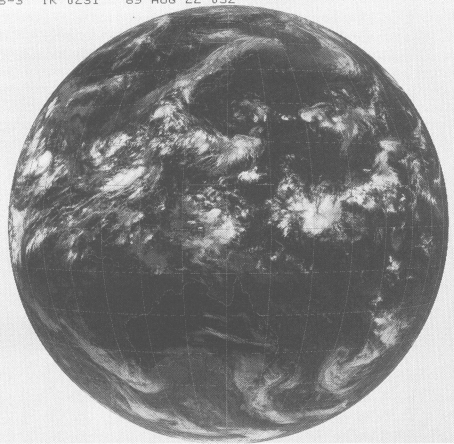
GMS-3 1R 0231 89 AUG 21 03Z



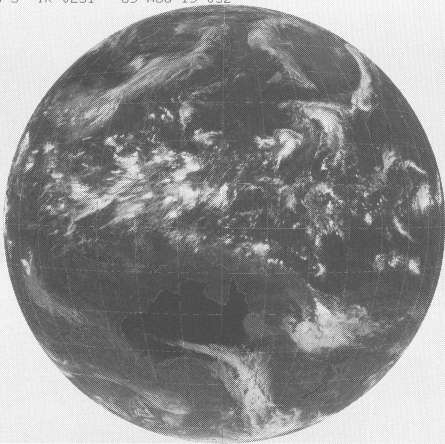
GMS-3 1R 0231 89 AUG 18 03Z



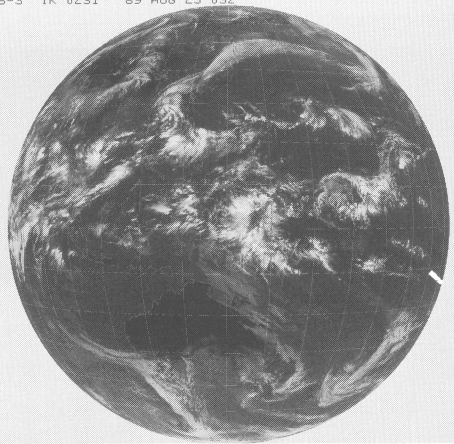
GMS-3 1R 0231 89 AUG 22 03Z



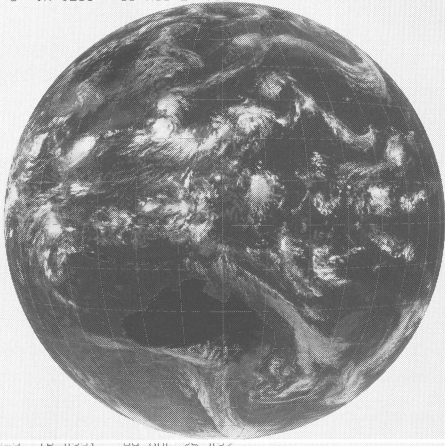
GMS-3 1R 0231 89 AUG 19 03Z



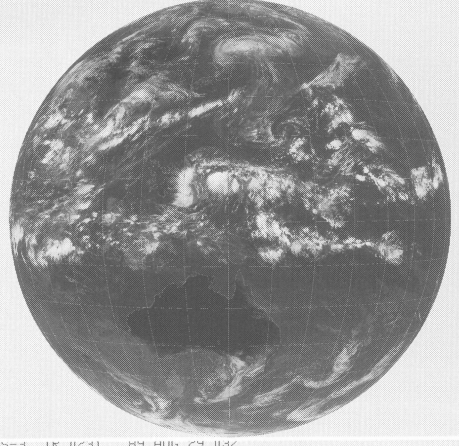
GMS-3 1R 0231 89 AUG 23 03Z



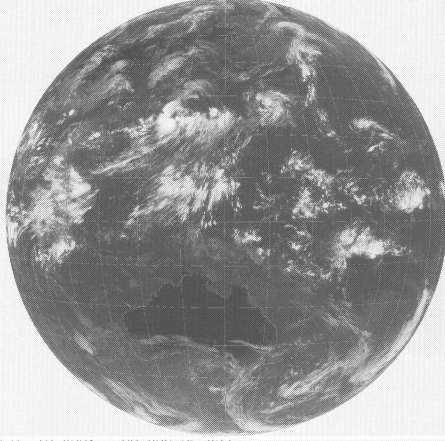
GMS-3 1K 0231 89 AUG 24 03Z



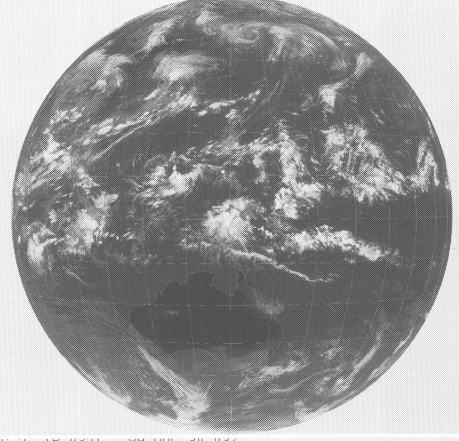
GMS-3 1K 0231 89 AUG 28 03Z



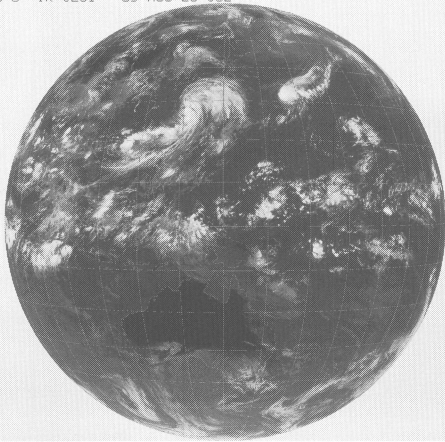
GMS-3 1K 0231 89 AUG 25 03Z



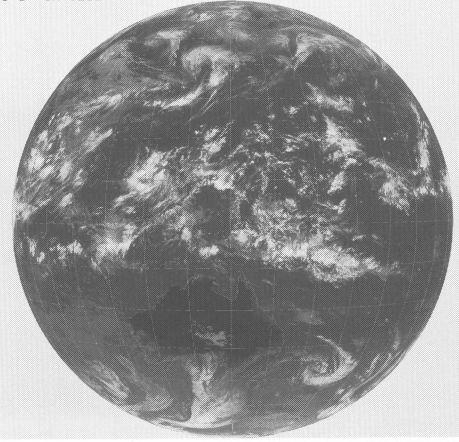
GMS-3 1K 0231 89 AUG 29 03Z



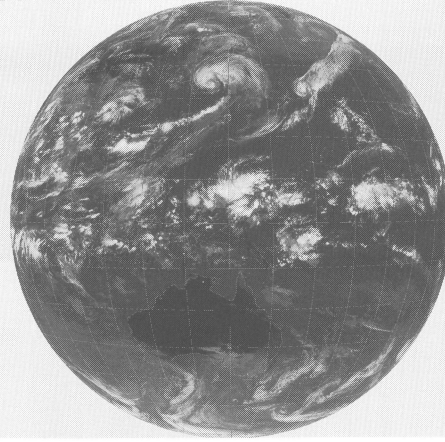
GMS-3 1K 0231 89 AUG 27 03Z



GMS-3 1K 0231 89 AUG 31 03Z



GMS-3 1K 0231 89 AUG 26 03Z



GMS-3 1K 0231 89 AUG 30 03Z

