

日々の衛星画像

1989年11月

(赤外画像)

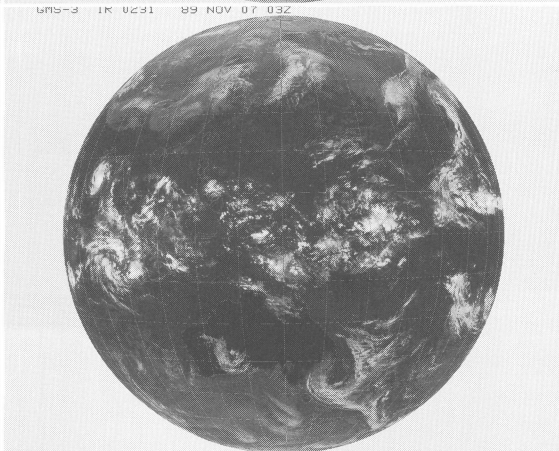
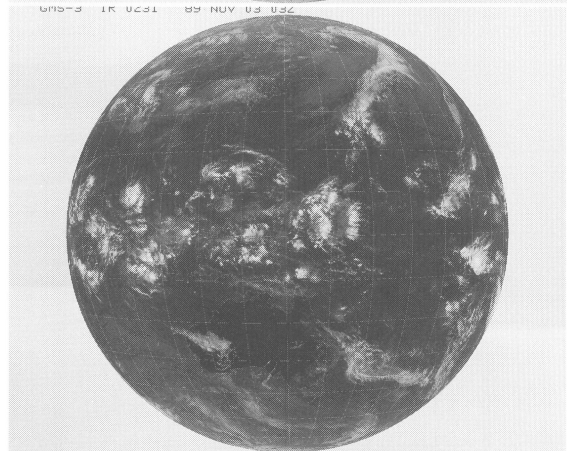
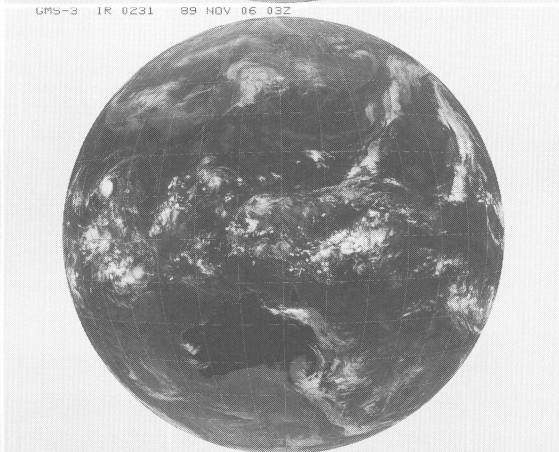
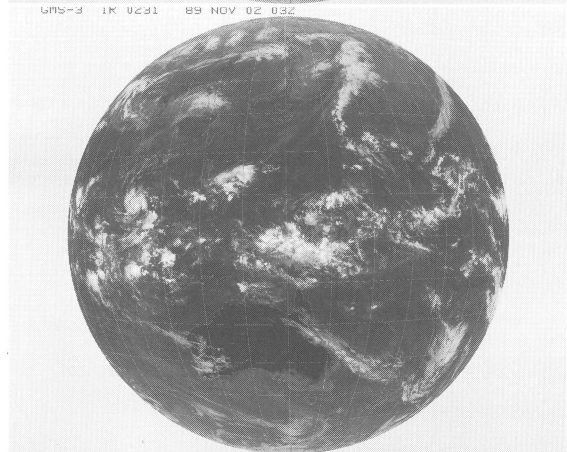
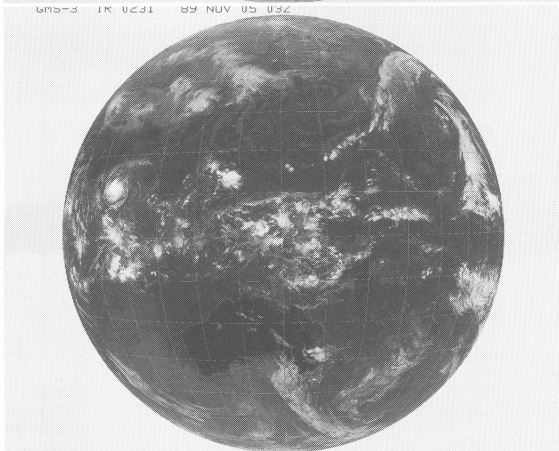
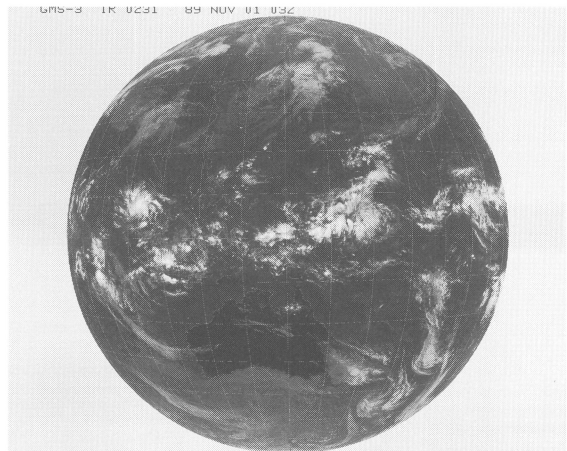
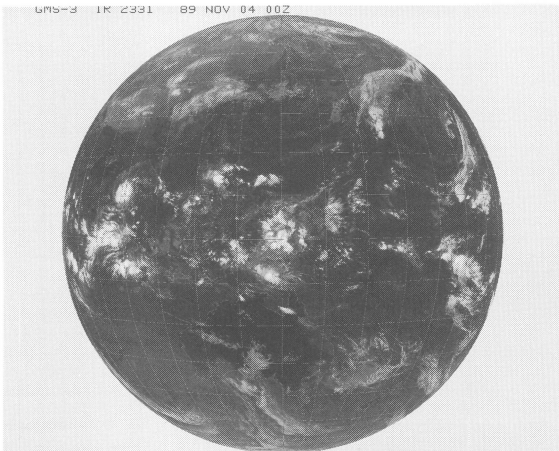
ひまわり3号

(表示例)

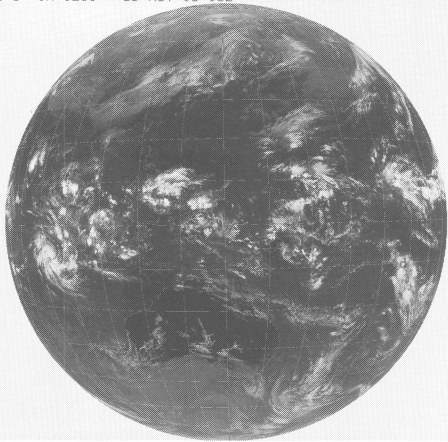
(気象庁提供)

ひまわり	赤外	撮像開始時分	年	月	日	時刻
GMS-3	IR	0231	85	OCT	01	03Z

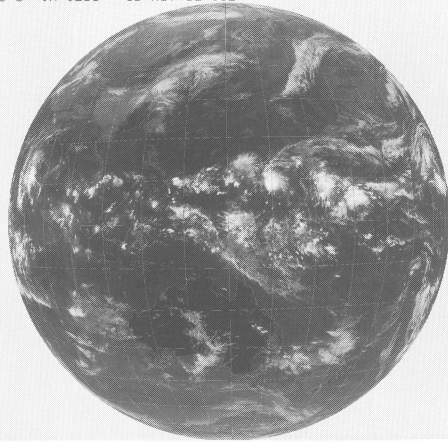
時刻は国際標準時で、9時間を加えると日本時間です。



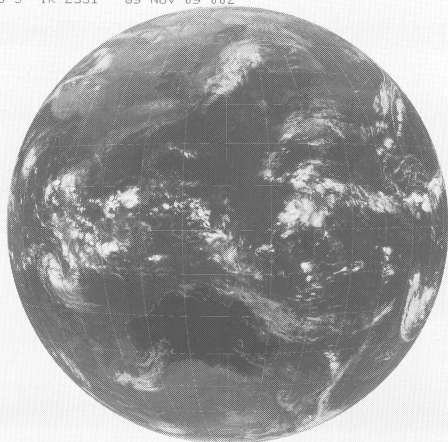
GMS-3 1R 0231 89 NOV 08 03Z



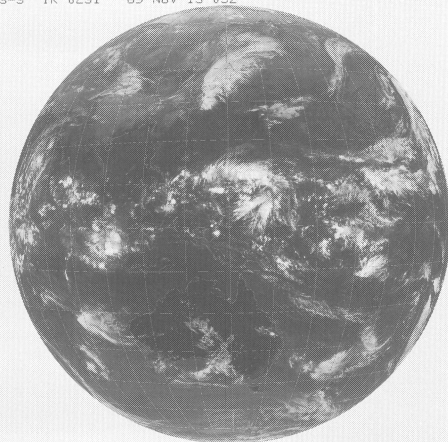
GMS-3 1R 0231 89 NOV 12 03Z



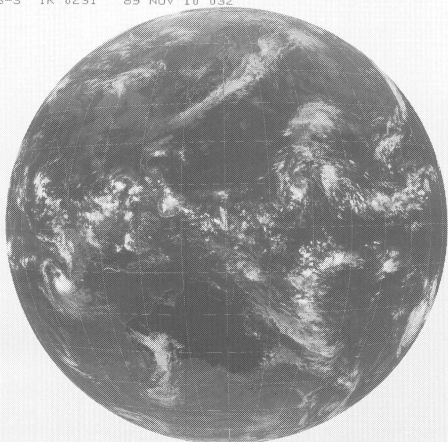
GMS-3 1R 2331 89 NOV 09 00Z



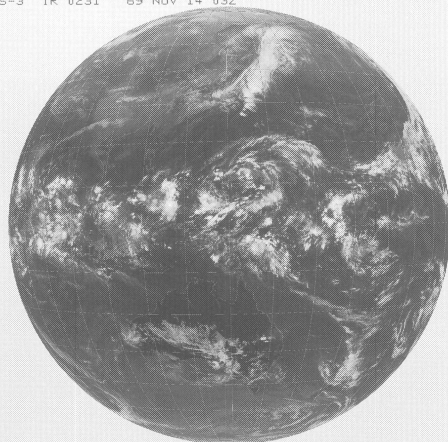
GMS-3 1R 0231 89 NOV 13 03Z



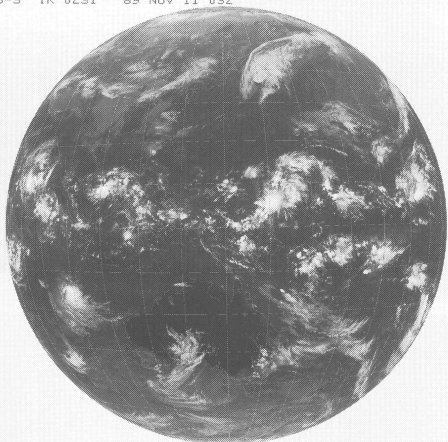
GMS-3 1R 0231 89 NOV 10 03Z



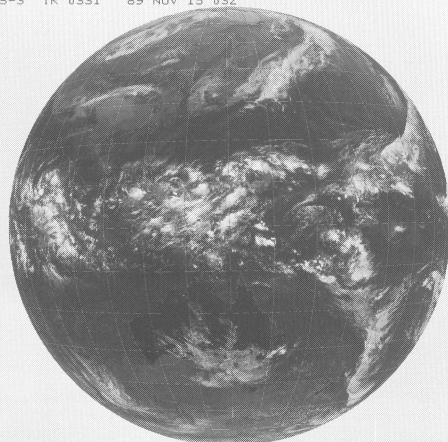
GMS-3 1R 0231 89 NOV 14 03Z



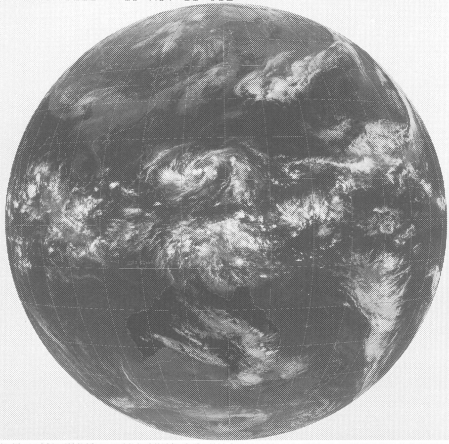
GMS-3 1R 0231 89 NOV 11 03Z



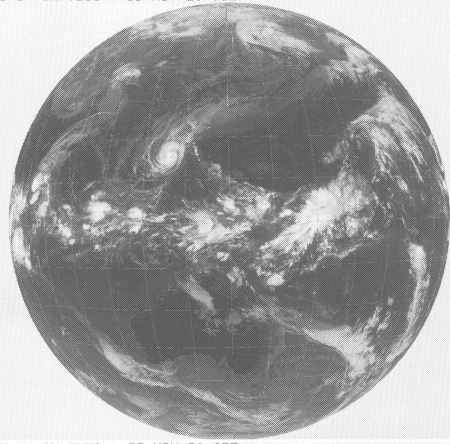
GMS-3 1R 0231 89 NOV 15 03Z



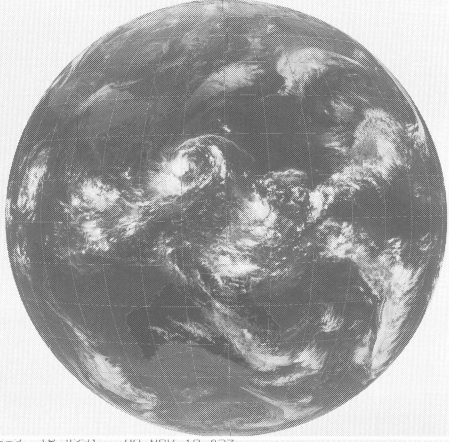
GMS-3 1R 0231 89 NOV 16 03Z



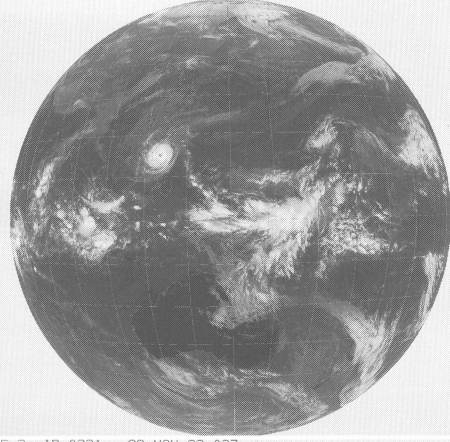
GMS-3 1R 0231 89 NOV 20 03Z



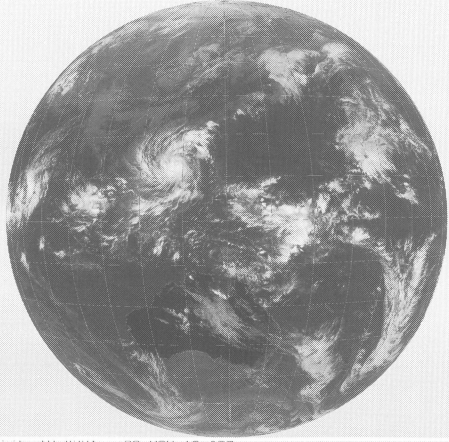
GMS-3 1R 0231 89 NOV 17 03Z



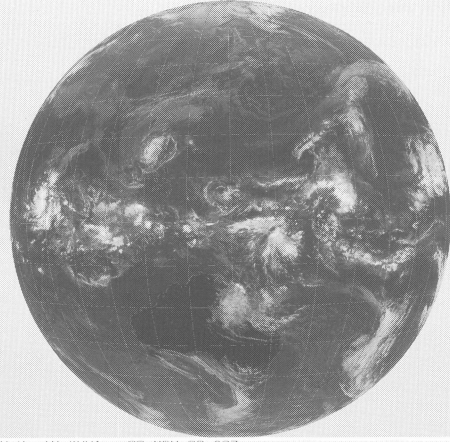
GMS-3 1R 0231 89 NOV 21 03Z



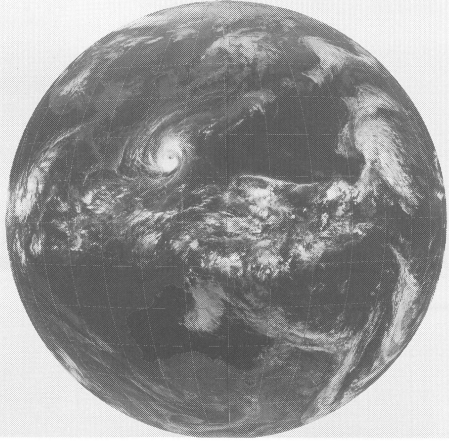
GMS-3 1R 0231 89 NOV 18 03Z



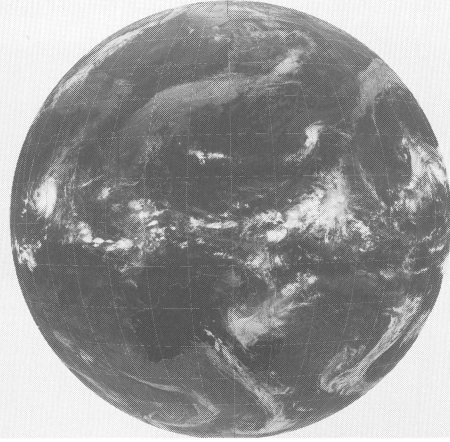
GMS-3 1R 0231 89 NOV 22 03Z



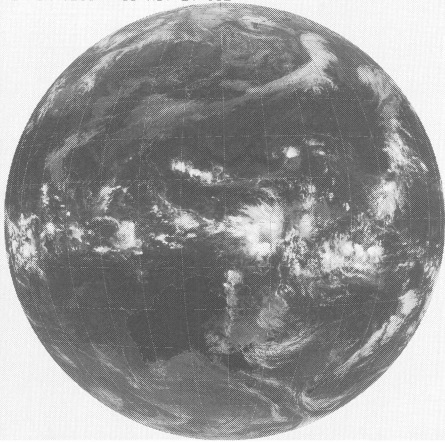
GMS-3 1R 0231 89 NOV 19 03Z



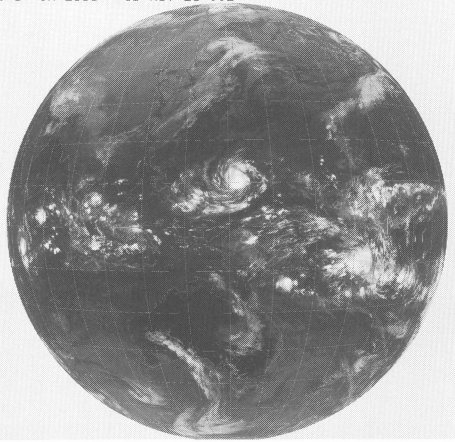
GMS-3 1R 0231 89 NOV 23 03Z



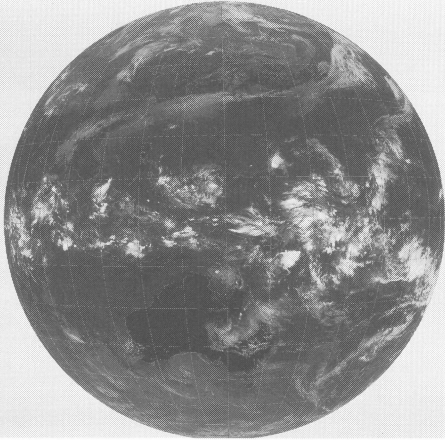
GMS-3 1R 0231 89 NOV 24 03Z



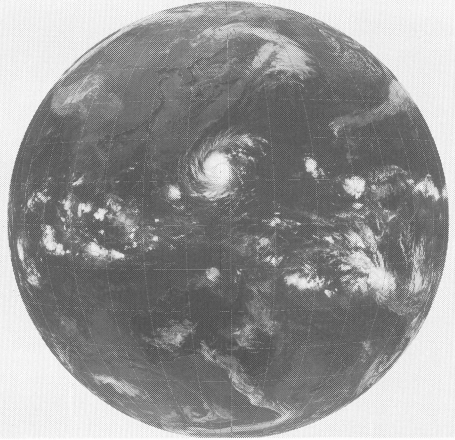
GMS-3 1R 2331 89 NOV 26 00Z



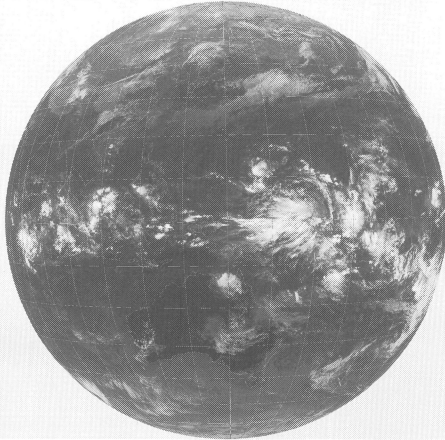
GMS-3 1R 0231 89 NOV 25 03Z



GMS-3 1R 2331 89 NOV 29 00Z



GMS-3 1R 0231 89 NOV 26 03Z



GMS-3 1R 2331 89 NOV 30 00Z



GMS-3 1R 2331 89 NOV 27 00Z

