

日々の衛星画像

1990年 2月

(赤外画像)

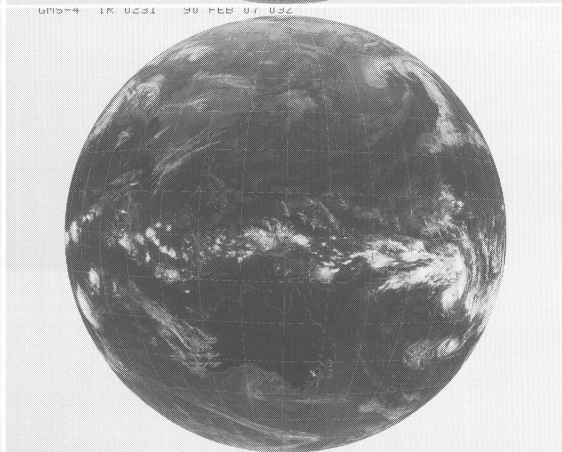
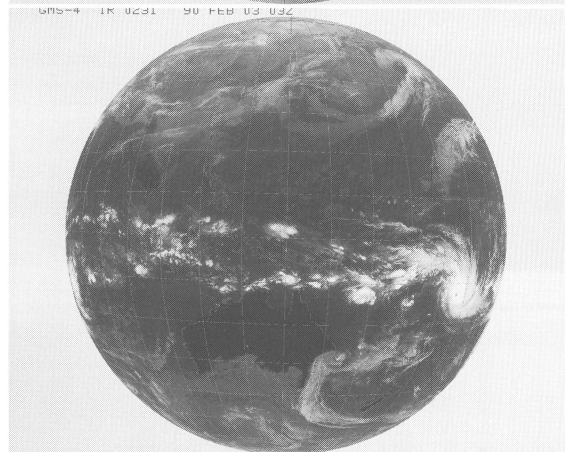
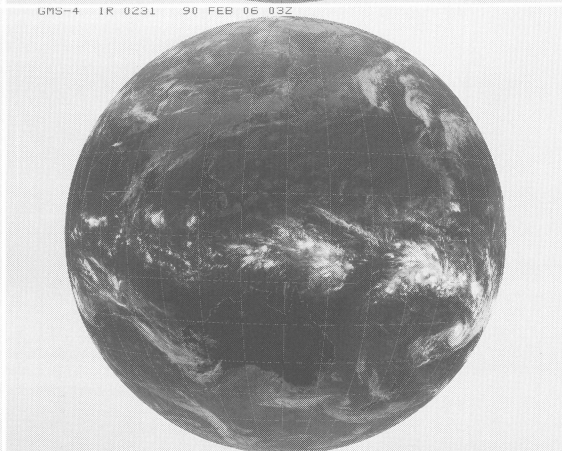
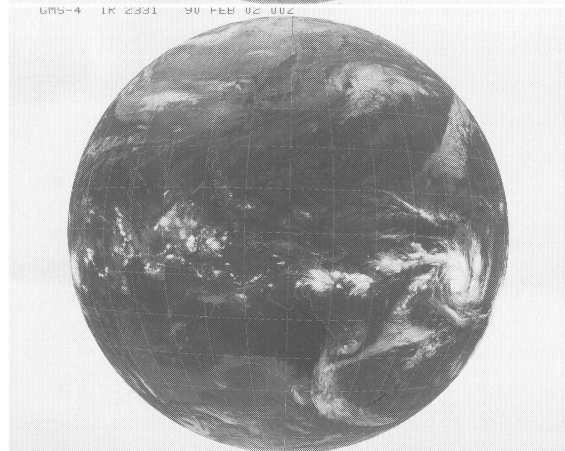
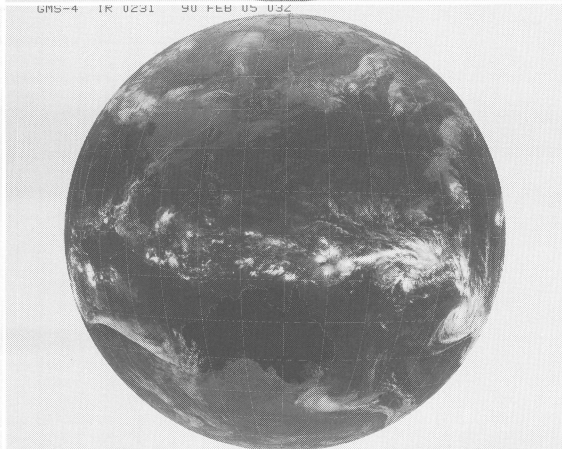
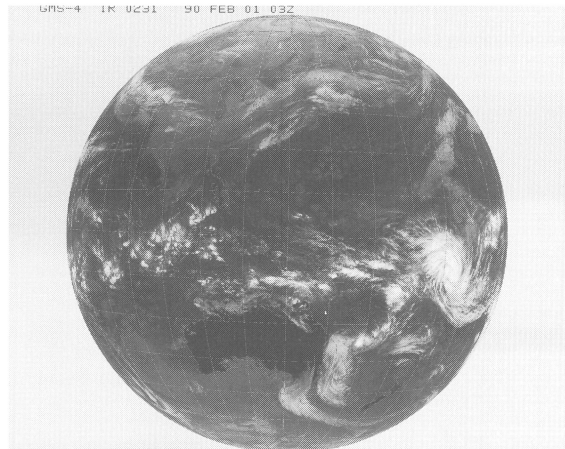
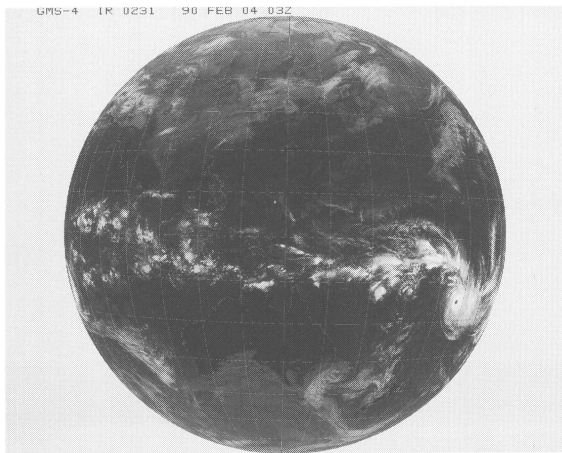
ひまわり3号

(表示例)

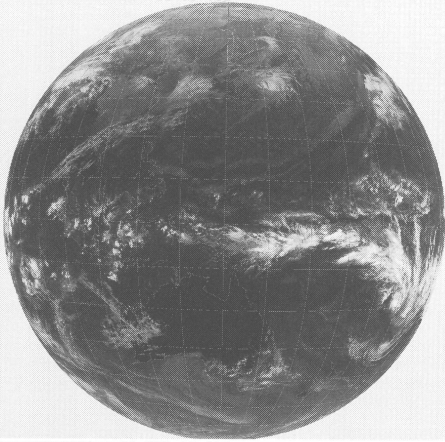
(気象庁提供)

ひまわり	赤外	撮像開始時分	年	月	日	時刻
GMS-3	IR	0231	85	OCT	01	03Z

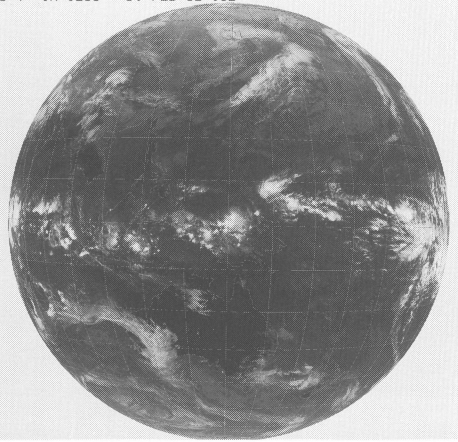
時刻は国際標準時で、9時間を加えると日本時間です。



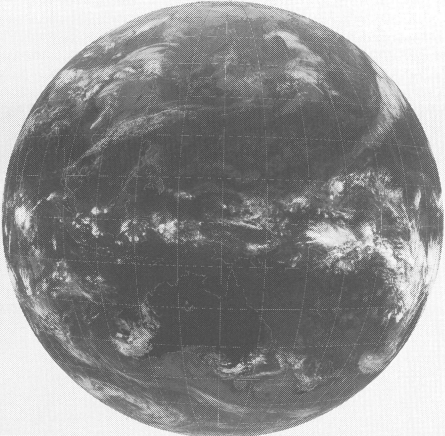
GMS-4 IR 0231 90 FEB 08 03Z



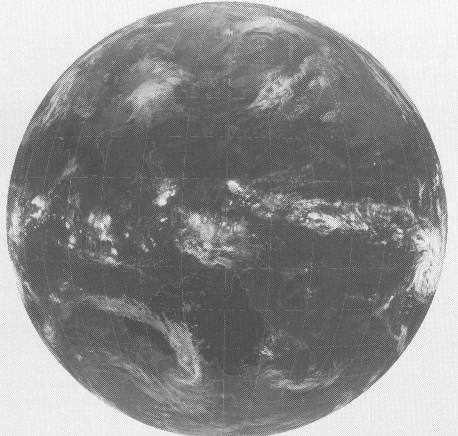
GMS-4 IR 0231 90 FEB 12 03Z



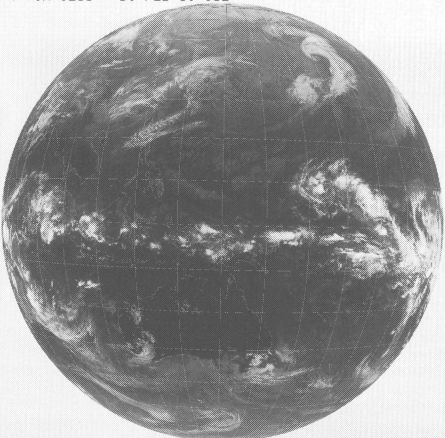
GMS-4 IR 0231 90 FEB 09 03Z



GMS-4 IR 0231 90 FEB 13 03Z



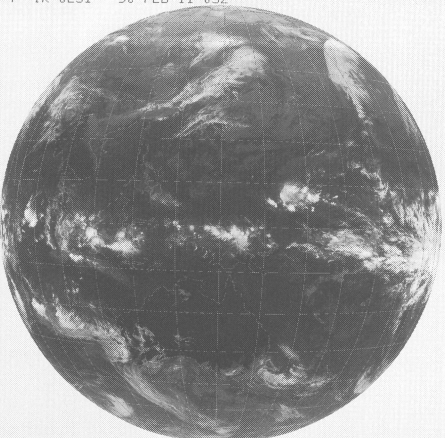
GMS-4 IR 0231 90 FEB 10 03Z



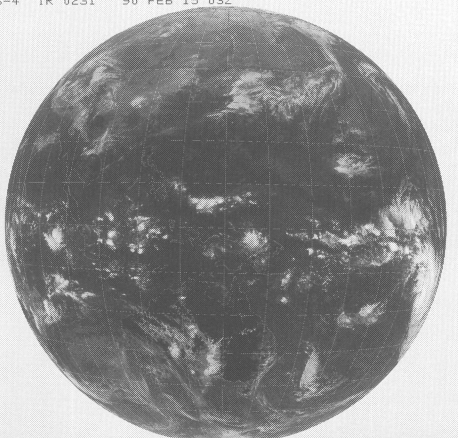
GMS-4 IR 0231 90 FEB 14 03Z



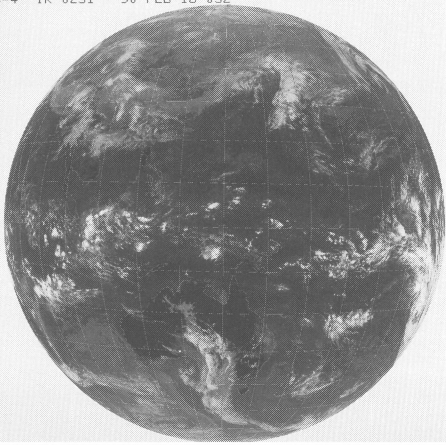
GMS-4 IR 0231 90 FEB 11 03Z



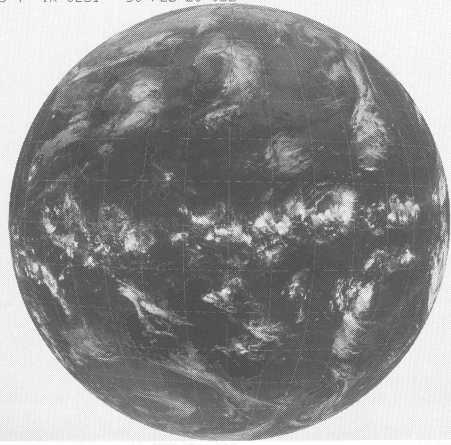
GMS-4 IR 0231 90 FEB 15 03Z



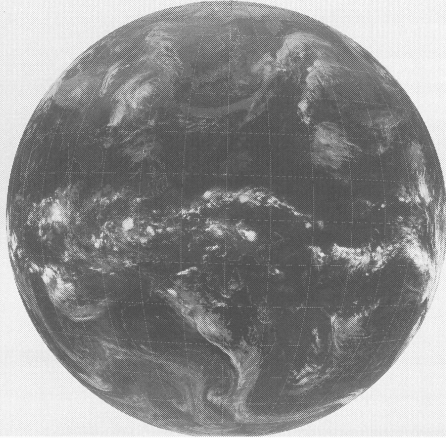
GMS-4 IR 0231 90 FEB 16 03Z



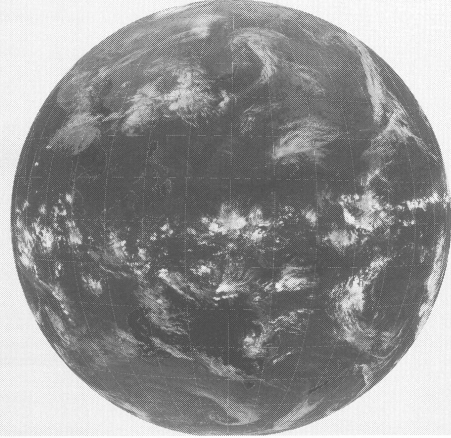
GMS-4 IR 0231 90 FEB 20 03Z



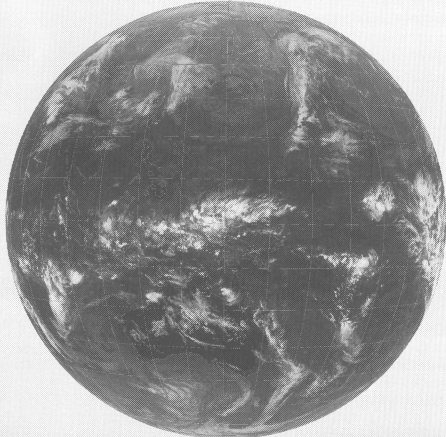
GMS-4 IR 2331 90 FEB 17 00Z



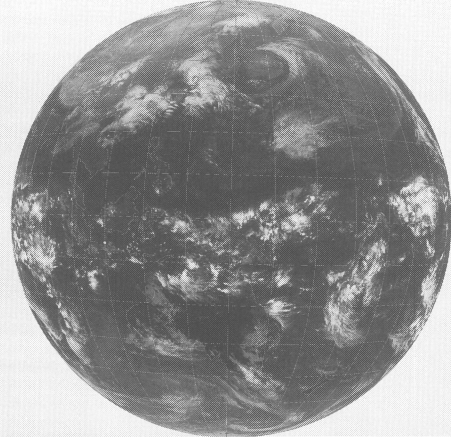
GMS-4 IR 0231 90 FEB 21 03Z



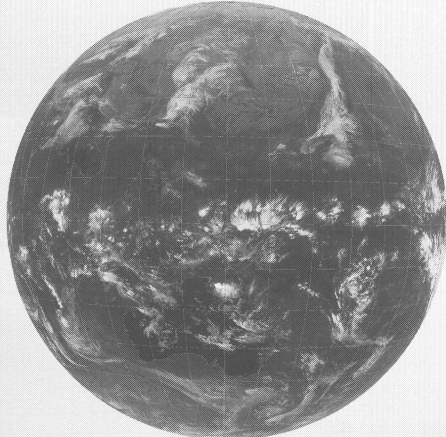
GMS-4 IR 0231 90 FEB 18 03Z



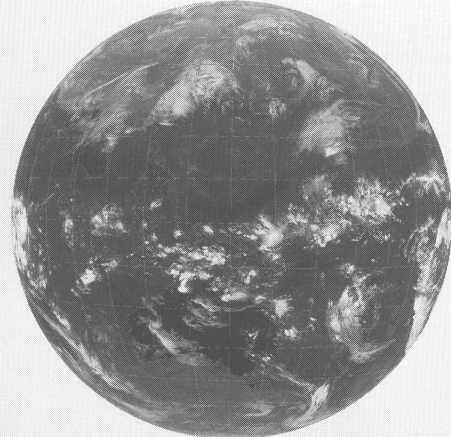
GMS-4 IR 2331 90 FEB 22 00Z



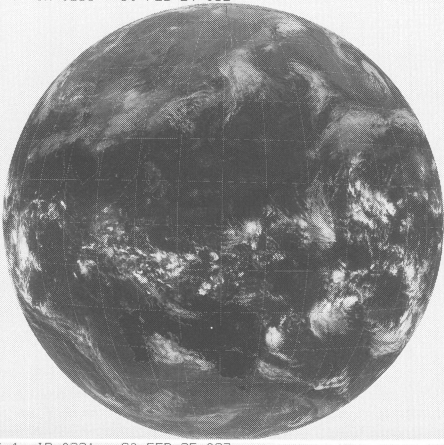
GMS-4 IR 0231 90 FEB 19 03Z



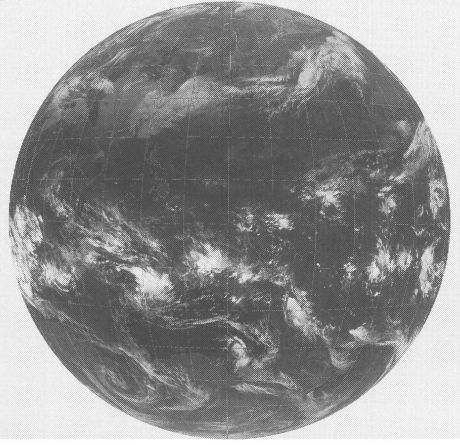
GMS-4 IR 0231 90 FEB 23 03Z



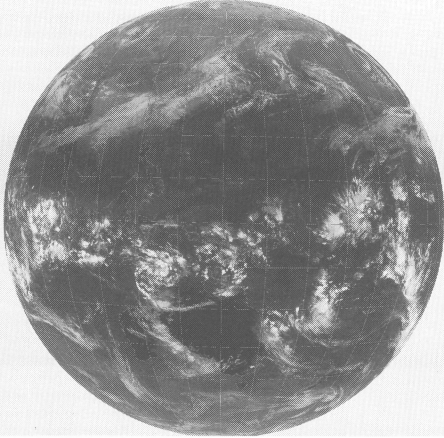
GMS-4 IR 0231 90 FEB 24 03Z



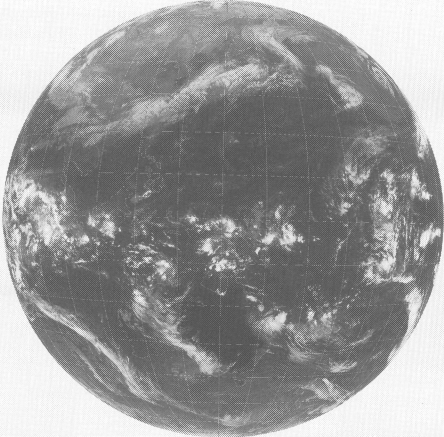
GMS-4 IR 0231 90 FEB 28 03Z



GMS-4 IR 0231 90 FEB 25 03Z



GMS-4 IR 2331 90 FEB 26 00Z



GMS-4 IR 0231 90 FEB 27 03Z

