

日々の衛星画像

1990年6月 (赤外画像)

ひまわり4号

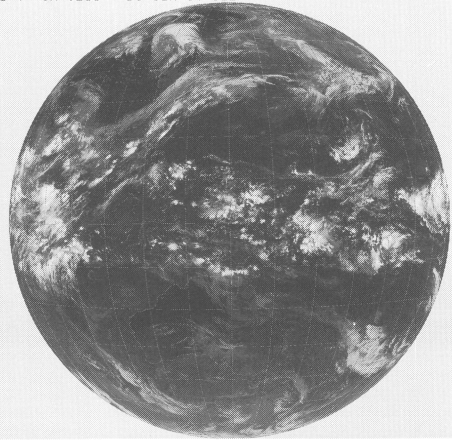
(表示例)

(気象庁提供)

ひまわり 赤外 撮像開始時分 年 月 日 時刻
GMS-4 IR 0231 85 OCT 01 03Z

時刻は国際標準時で、9時間を加えると日本時間です。

GMS-4 IR 0231 90 JUN 04 03Z



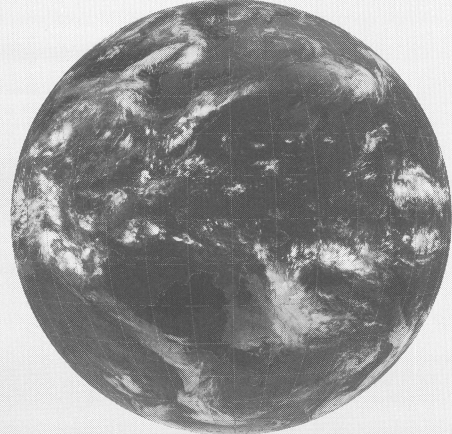
GMS-4 IR 0231 90 JUN 05 03Z



GMS-4 IR 2331 90 JUN 02 00Z



GMS-4 IR 0231 90 JUN 06 03Z



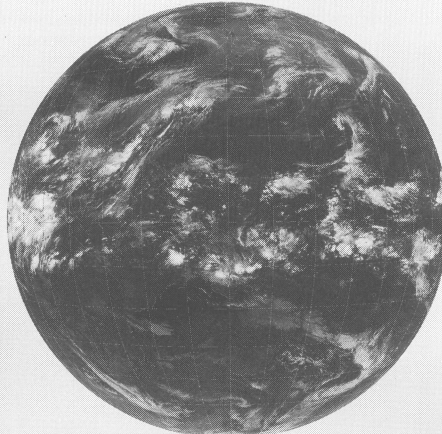
GMS-4 IR 2331 90 JUN 02 00Z



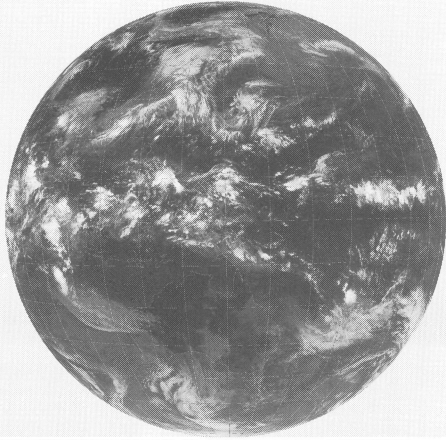
GMS-4 IR 0231 90 JUN 07 03Z



GMS-4 IR 0231 90 JUN 03 03Z



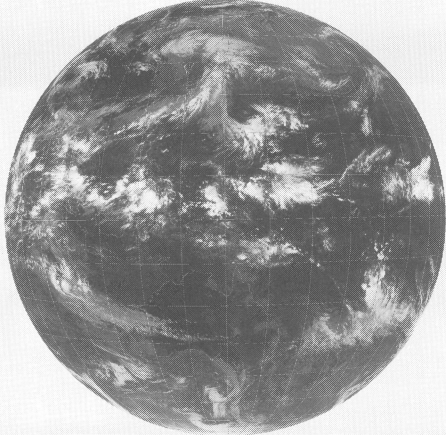
GMS-4 IR 0231 90 JUN 08 03Z



GMS-4 IR 0231 90 JUN 12 03Z



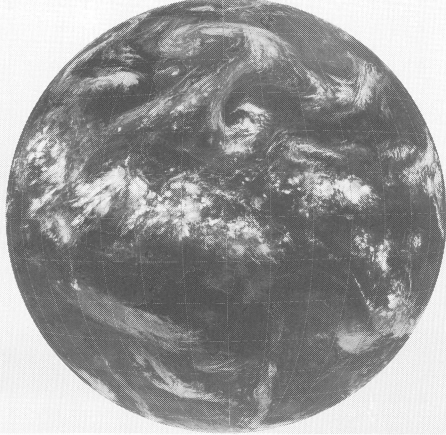
GMS-4 IR 0231 90 JUN 09 03Z



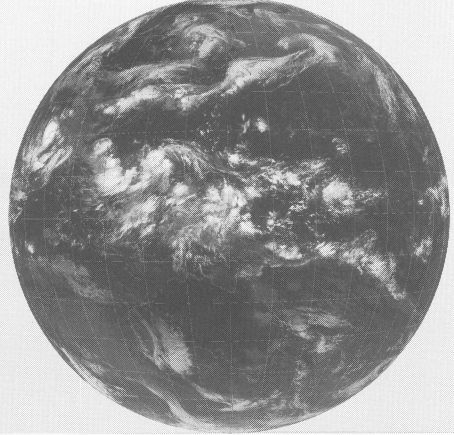
GMS-4 IR 0231 90 JUN 13 03Z



GMS-4 IR 0231 90 JUN 10 03Z



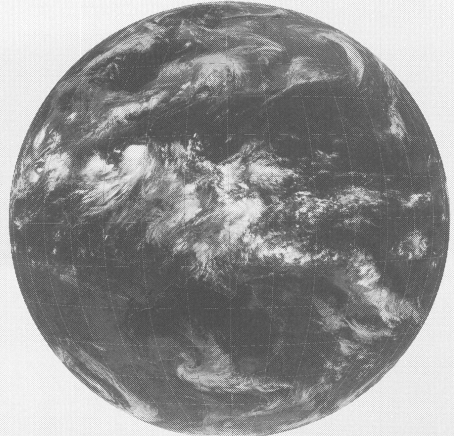
GMS-4 IR 0231 90 JUN 14 03Z



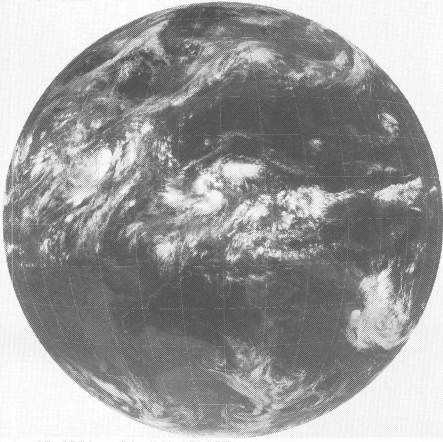
GMS-4 IR 0231 90 JUN 11 00Z



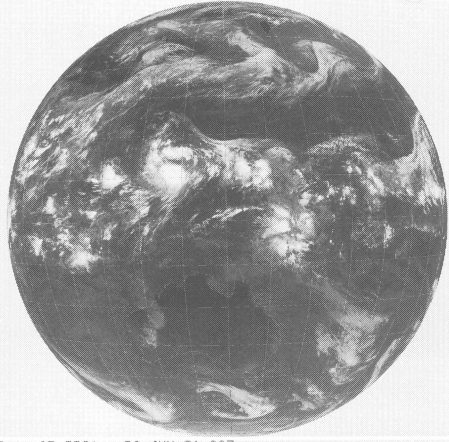
GMS-4 IR 0231 90 JUN 15 03Z



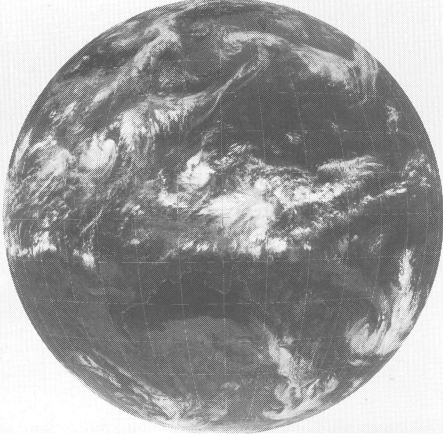
GMS-4 1R 0231 90 JUN 16 03Z



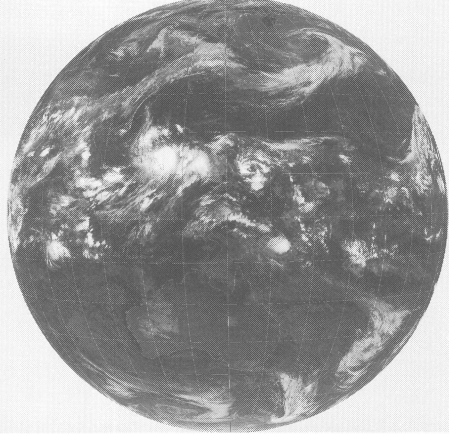
GMS-4 1R 0231 90 JUN 20 03Z



GMS-4 1R 0231 90 JUN 17 03Z



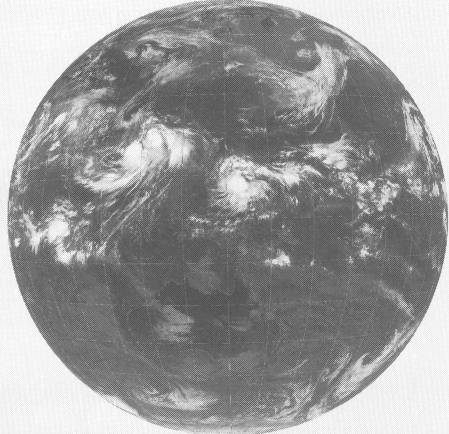
GMS-4 1R 2331 90 JUN 21 00Z



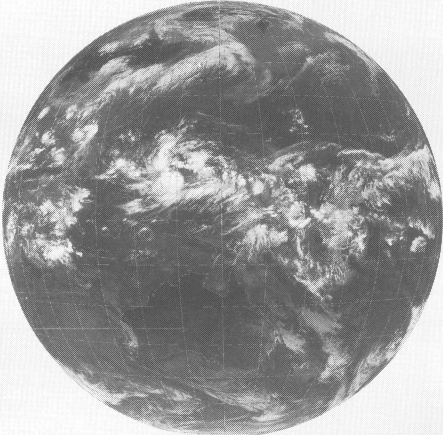
GMS-4 1R 2331 90 JUN 18 00Z



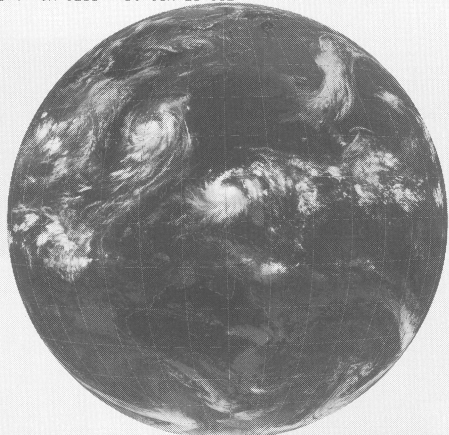
GMS-4 1R 0231 90 JUN 22 03Z



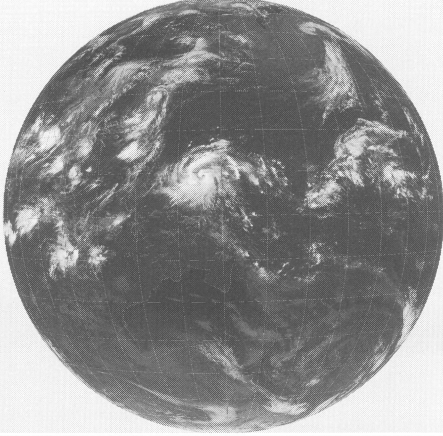
GMS-4 1R 0231 90 JUN 19 03Z



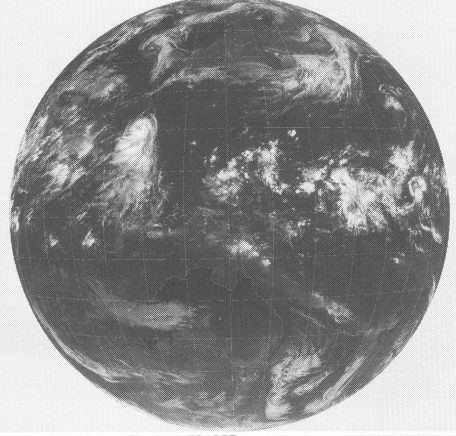
GMS-4 1R 0231 90 JUN 23 03Z



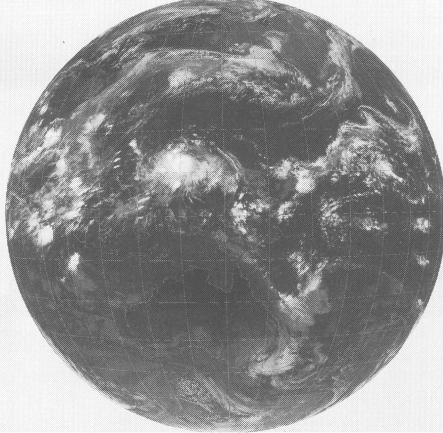
GMS-4 IR 0231 90 JUN 24 03Z



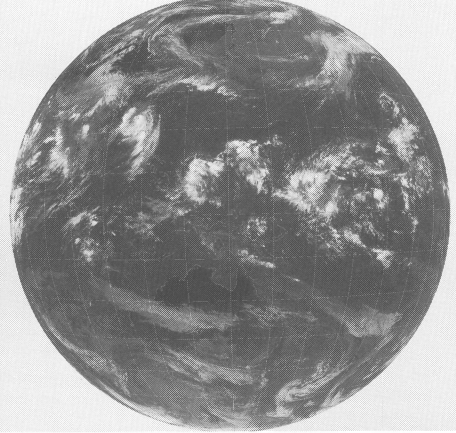
GMS-4 IR 0231 90 JUN 26 03Z



GMS-4 IR 0231 90 JUN 25 03Z



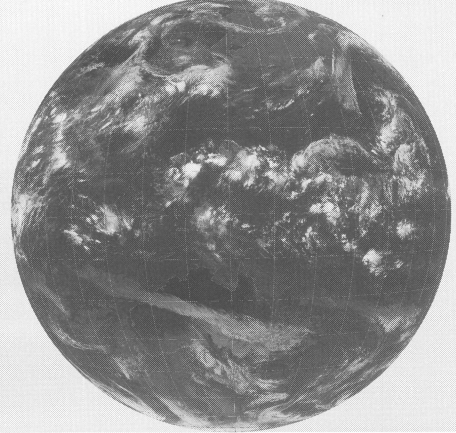
GMS-4 IR 0231 90 JUN 29 03Z



GMS-4 IR 2331 90 JUN 26 00Z



GMS-4 IR 0231 90 JUN 30 03Z



GMS-4 IR 0231 90 JUN 27 03Z

